



1302/1864

PRIORITY DOCUMENT

SUBMITTED OR TRANSMITTED IN COMPLIANCE WITH RULE 17.1(a) OR (b)

The Patent Office
Concept House
Cardiff Road
Newport
South Wales
NP10 8QQ

4

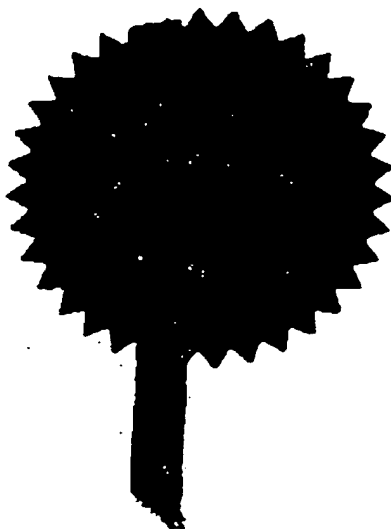
REC'D 15 FEB 2001
WIPO PCT

I, the undersigned, being an officer duly authorised in accordance with Section 74(1) and (4) of the Deregulation & Contracting Out Act 1994, to sign and issue certificates on behalf of the Comptroller-General, hereby certify that annexed hereto is a true copy of the documents as originally filed in connection with the patent application identified therein.

In accordance with the Patents (Companies Re-registration) Rules 1982, if a company named in this certificate and any accompanying documents has re-registered under the Companies Act 1980 with the same name as that with which it was registered immediately before re-registration save for the substitution as, or inclusion as, the last part of the name of the words "public limited company" or their equivalents in Welsh, references to the name of the company in this certificate and any accompanying documents shall be treated as references to the name with which it is so re-registered.

In accordance with the rules, the words "public limited company" may be replaced by p.l.c., plc, P.L.C. or PLC.

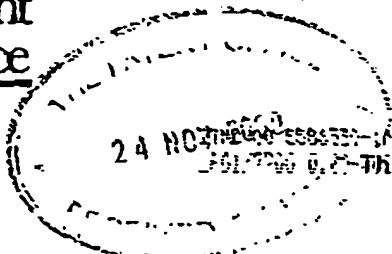
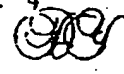
Re-registration under the Companies Act does not constitute a new legal entity but merely subjects the company to certain additional company law rules.



Signed

Dated 27 December 2000

An Executive Agency of the Department of Trade and Industry



WLB 707-1

Request for a grant of a patent

(See the notes on the back of this form you can also get an explanatory leaflet from the Patent Office to help you fill in this form)

Cardiff Road Newport Gwent NP9 1RH

1. Your reference P010120GB CTH

2. Patent application number (The Patent Office will fill in this part) 0028701.1

24 NOV 2000

3. Full name, address and postcode of the or of each applicant (underline all surnames) Danisco A/S Langebrogade 1 PO Box 17 DK-1001 Copenhagen K Denmark

Patents ADP number (if you know it)

If the applicant is a corporate body, give the country/state of its incorporation Denmark

5600-573002

4. Title of the invention METHOD OF IMPROVING DOUGH AND BREAD QUALITY

5. Name of your agent (if you have one) D YOUNG & CO "Address for service" in the United Kingdom to which all correspondence should be sent (including the postcode) 21 NEW FETTER LANE LONDON EC4A 1DA Patents ADP number (if you know it) 59006

6. If you are declaring priority from one or more earlier patent applications, give the country and date of filing of the or each of these earlier applications and (if you know it) the or each application number	Country	Priority application number (if you know it)	Date of filing (day/month/year)
1st	DK	1736/99	3 Dec 1999
2nd	US	60/189,780	16 Mar 2000
3rd			

7. If this application is divided or otherwise derived from an earlier UK application, give the number and filing date of the earlier application Number of earlier application Date of filing (day/month/year)

8. Is a statement of inventorship and of right to grant of a patent required in support of this request? (Answer 'Yes' if:

- a) any applicant named in part 3 is not an inventor, or
 - b) there is an inventor who is not named as an applicant, or
 - c) any named applicant is a corporate body
- See note (d))

Yes

9. Enter the number of sheets for any of the following items you are filing with this form. Do not count copies of the same document

Continuation sheets of this form	0
Description	59 /
Claim(s)	4 /
Abstract	1 /
Drawing(s)	4 + 4

EN

10. If you are also filing any of the following, state how many against each item

Priority Documents	0
Translation of Priority Documents	0
Statement of inventorship and right to grant of a patent (Patents Form 7/77)	0
Request for preliminary examination and search (Patents Form 9/77)	0
Request for substantive examination (Patents Form 10/77)	0
Any other documents (Please specify)	No

11.

We request the grant of a Patent on the basis of this application.

Signature

Date

D. Young & Co.
D YOUNG & CO
 Agents for the Applicants

24 Nov 2000

12. Name and daytime telephone number of person to contact in the United Kingdom

Charles Harding

023 80634816

Warning

After an application for a patent has been filed, the Comptroller of the Patent Office will consider whether publication or communication of the invention should be prohibited or restricted under Section 22 of the Patents Act 1977. You will be informed if it is necessary to prohibit or restrict your invention in this way. Furthermore, if you live in the United Kingdom, Section 23 of the Patents Act 1977 stops you from applying for a patent abroad without first getting written permission from the Patent Office unless an application has been filed at least 6 weeks beforehand in the United Kingdom for a patent for the same invention and either no direction prohibiting publication or communication has been given, or any such direction has been revoked.

Notes

- a) If you need help to fill in this form or you have any questions, please contact the Patent Office on 01645 500505.
- b) Write your answers in capital letters using black ink or you may type them.
- c) If there is not enough space for all the relevant details on any part of this form, please continue on a separate sheet of paper and write "see continuation sheet" in the relevant part(s). Any continuation sheets should be attached to this form.
- d) If you answered "Yes" Patents Form 7/77 will need to be filed.
- e) Once you have filled in the form you must remember to sign and date it.
- f) For details of the fee and ways to pay please contact the Patent Office.

METHOD OF IMPROVING DOUGH AND BREAD QUALITY**FIELD OF THE INVENTION**

5

The present invention relates to the field of manufacturing flour doughs and flour dough based products and in particular to improving the strength and machinability of doughs and the volume and crumb structure of bread and other baked products. Specifically, the invention provides a method for making doughs and bread using enzymes that are capable of hydrolysing both nonpolar and polar lipids present in the dough whereby the quality of the dough and the finished baked products is improved.

TECHNICAL BACKGROUND AND PRIOR ART

15

Within the baking industry it is well known to use enzymes, such as amylases, xylanases, oxidases and proteases, for the improvement of the dough and the handling properties of doughs and/or improvement of the baked product to obtain increased volume, retarded staling and enhanced softness.

20

The use of lipases as baking additives is also known. Lipases (EC 3.1.1.3), which can be defined as carboxylesterases catalysing the hydrolysis of acylglycerols, are physiologically very important enzymes as one of the three major digestive enzymes together with amylases and proteases. They hydrolyse acylglycerol lipids to glycerol and fatty acids, but can also function in esterification or transesterification reactions.

Thus, US 3,368,903 discloses purified lipase preparations isolated from plant seeds which, when added to a bread dough mixture, has a significant retarding effect on bread staling.

30

JP-62-285749-A describes a method of bread making in which lipase is added to the dough in admixture with vital gluten and lecithin. However, it is stated that this lipase deteriorates quality properties such as the bread volume and the elasticity of the crumb.

35 Mohsen et al. (Egypt. J. Food Sci., 1986, 14:175-182) describes that a lipase produced by *Rhizopus delemar* may improve the softness of bread.

A bread improving composition comprising glucose oxidase in combination with oxidases or hydrolases such as for example lipase is disclosed in EP 468 731 A1. There is obtained bread of a sufficient volume. However, according to this prior art document the use of lipase alone did not result in bread of a satisfactory quality.

5

WO-94/04035 discloses a method of improving the properties of a dough (with and without added fat) and/or a baked product made from the dough by adding a lipase (EC 3.1.1.3) of microbial origin to the dough. The use of the microbial lipase resulted in an increased volume and improved softness of the baked product. Furthermore, an anti-
10 staling effect was found.

EP 565 988 A1 discloses a bread improver composition comprising at least one lipase, at least one hemicellulase and at least one amylase. Baking experiments showed that the use of lipase alone in a dough without added fat resulted in a reduced volume of the
15 baked product whereas no volume effect was observed when lipase was used in a dough containing added fat.

WO98/45453 discloses the use of a lipase form *Aspergillus niger* for improvement of breadcrumb structure. However, this enzyme did not have significant improving effects on
20 bread volume and softness.

From the prior art it can thus be derived that the effects of lipases when used as dough additives are highly variable in respect of antistaling or crumb firmness retardation and improvement of bread volume.

25

A significant effect of the lipase disclosed in WO98/45453 is that it, in addition to its triglyceride hydrolysing effect, is capable of hydrolysing polar glycolipids present in flour, such as e.g. digalatosyldiglyceride (DGDG). It was hypothesised that the bread crumb structure improving effect might be associated with this latter effect. It was also shown
30 that the *Aspergillus niger* lipase did not have a phospholipid hydrolysing effect.

It is known to use phospholipases for improvement of bread quality. Thus, JP-82-66213 discloses the use of phospholipase C and a lysophospholipase for improvement of frozen doughs, EP 575 133 A discloses the use of phospholipase A1 to improve handling
35 properties of doughs, JP-60-078529 describes the use of a phospholipase A to improve the mechanical properties of wheat flour doughs and noodles and EP 109 244 A discloses that phospholipase A can be used to improve the properties of doughs.

Whereas the addition of lipases or phospholipases to flour doughs to improve the mechanical properties of the doughs and/or the quality of the finished baked products is known in the art, it is a significant problem that the amount of lipid substrates for the
5 respective enzymes present in flour is limited. The substrate for lipases in a wheat flour dough is the endogenous lipids of which about 50% are nonpolar lipids and 50% are polar glycolipids and phospholipids.

Several of the lipases presently used in the baking industry including those disclosed in
10 EP 585 998 and WO 94/04035 are only active against the nonpolar lipid fraction resulting in the formation of free fatty acids and glycerol and to a less extent, mono- or diglycerides. The beneficial effects on dough or bread quality is, however, rather limited as free fatty acids may have an adverse effect on bread quality. The fungal lipase disclosed in WO98/45453 has, in addition to its effect on acylglycerols, a certain
15 hydrolysing effect on the polar glycolipids.

Additionally, as it is mentioned above, the use of phospholipases A and C has been suggested as dough and/or bread improving additives. The enzymatic effect of such phospholipases is that the phospholipids present in the dough is converted into the
20 corresponding lysophospholipids which are known to be effective emulsifying agents. However, the amount of endogenous phospholipids in bread doughs is relatively small and therefore the dough and bread improving effect of adding enzymes that are selectively active against phospholipids will be limited.

25 There is therefore a need for a dough and/or bread improving enzyme that is capable of hydrolysing substantially all of the lipid types present in flour doughs, i.e. the nonpolar acylglycerols and the polar phospholipids and glycolipids. The present invention is based on the discovery of lipolytically active enzymes that are capable of utilising all of these lipids simultaneously as substrates and it has been found that the addition of such an
30 enzyme to a dough results in significant improvements of dough stability and strength and the handling properties of doughs and in improved quality of the baked bread products in terms of a significant enhancement of bread volume, crumb structure, crumb appearance, and colour and of the softness of the bread. A particularly interesting and important aspect of these novel enzymes is that they may have preference for polar lipids implying
35 that the adverse effects that have been observed for acylglycerol hydrolysing lipases can be controlled by selecting enzymes preferentially hydrolysing polar lipids. A further interesting and important aspect of these novel enzymes is that they may have

preference for long chain fatty acids, such as C₁₂ to C₂₀ fatty acids, as compared with short chain fatty acids, such as C₄ to C₁₀ fatty acids.

Chain-length selectivity has been shown in the prior art to be affected by amino acid
5 substitutions in a lipase from *Rhizopus delemar*. R.D. Joerger *et al* (*Lipids*, 29 (6) 377-
384 (1994)) indicates that variants F95D, F112W and V209W have an altered preference
to C₄ and C₆ acids. R.R. Klein *et al* (*JAACS*, 74 (11) 1401-1407 (1997)) discloses that
the variant V206T+F95D has a higher selectivity for C₈ fatty acids. R.R. Klein *et al* (*Lipids*
10 32 (2) 123-130 (1997)) show that the variants V209W+F112W, V94W and F95D+F214R
have a higher hydrolytic activity towards C₄ to C₆ fatty acids, and suggest that structural
determinants for medium-chain length specificity may reside in the distal end of the acyl
binding groove.

It has also been found that the dough and bread improving effects of the enzymes
15 according to the invention can be further enhanced by adding glycolipids and/or
phospholipids to the dough, e.g. in the form of cereal lipids including oat oil.

SUMMARY OF THE INVENTION

20

Accordingly, the invention pertains in a first aspect to a method of preparing a flour
dough, said method comprising adding to the dough components an enzyme that, under
dough conditions, is capable of hydrolysing a nonpolar lipid, a glycolipid and a
phospholipid, or a composition containing said enzyme, and mixing the dough
25 components to obtain the dough. Any of the lipid substrates for the enzyme can be lipids
naturally present in the flour or they may be added to the dough.

In a further aspect, there is provided a dough improving composition comprising an en-
zyme that, under dough conditions, is capable of hydrolysing a nonpolar lipid, a glycolipid
30 and a phospholipid, and optionally at least one further dough component. The further
dough component may e.g. be any other enzyme that has an improving effect on the
dough properties and/or the quality of a baked product made from the dough.

In a yet further aspect, the invention relates to a dough that is obtained by the method of
35 the invention and baked products that is obtained by baking such a dough, and noodle
and pasta products prepared in accordance with the invention.

DETAILED DISCLOSURE OF INVENTION

The present invention advantageously provides a method to improve the properties of
5 flour based doughs and products made from such doughs. This is, in respect of baked
products, achieved by providing a method for preparing baked products which have
highly desirable characteristics with respect to bread volume, crumb structure and ap-
pearance and which additionally have an extended shelf life as reflected in an enhanced
softness, i.e. the staling of the baked products is retarded relative to a baked product
10 made without use of the enzyme of the invention. Although it is presently preferred to use
the method for the manufacturing of yeast leavened bread products such as bread
loaves, rolls or toast bread, the use of the method for any other types of doughs and
dough based products such as noodle and pasta products and cakes, the quality of which
can be improved by the addition of the enzymes of the invention, is also contemplated.

15

The present method comprises as an essential step that an effective amount of an en-
zyme that, under dough conditions, is capable of hydrolysing a nonpolar lipid, a glycolipid
and a phospholipid, or a composition containing said enzyme is added to the dough either
directly to an already mixed dough or as a component of one or more dough components.

20

In the present context, the expression "an effective amount" is used generally to describe
an amount of the enzyme which is sufficient to effect, under dough conditions, detectable
hydrolysis of triglycerides, phospholipids and glycolipids present in the dough. Examples
of analytical methods permitting detection of these hydrolytic activities are given in the
25 below examples. More specifically, the expression may relate to an amount which does
not only result in detectable hydrolysis of the above lipid substrates, but which in addition
results in the formation of enzymatic end products at a level which results in improved
properties of the dough such as a significantly improved stickiness score and/or
extensibility score which can be ascribed to the addition of the enzyme, or, if the dough is
30 baked, in an improved quality of the baked product such as enhanced bread volume,
enhanced softness or improved crumb structure.

The enzyme of the present invention may possess some triglyceride hydrolysing effect.
The enzyme may, besides the triglyceride hydrolysing activity, also have hydrolysing
35 activity on phospholipids and glycolipids.

Alternatively, the enzyme of the invention may have significant hydrolytic activity on phospholipids and glycolipids, but a less significant triglyceride hydrolysing effect.

The enzyme of the invention can be described as a multifunctional enzyme that is capable of simultaneously hydrolysing acylglycerols (glycerides) (i.e. it has an esterase activity generally associated with the class of enzymes referred to as lipases (EC 3.1.1.3)), phospholipids and glycolipids such as galactolipids. Accordingly, the enzyme has a hydrolysing activity that is associated with a variety of enzymes generally referred to as phospholipases. Phospholipids are cleaved in two different ways by two groups of enzymes, one of which is included in the group of lipases and which include phospholipase A₁ and phospholipase A₂, and phosphodiesterases (phospholipases C and D). The enzyme of the invention may have any of these phospholipase activities.

It has been found that enzymes having the hydrolytic characteristics of the enzyme according to the invention may have different affinities for fatty acid moieties in the lipid substrate implying that the enzyme of the invention may preferentially hydrolyse lipids containing short chain fatty acids such as C₄ to C₁₀ fatty acids or it may preferentially hydrolyse lipids having long chain fatty groups such as C₁₂ to C₂₀ fatty acids. Enzymes having preference for long chain fatty acid groups may e.g. be particularly useful in doughs where butter fat or other lipids containing butyric acid groups, as it is a known problem that free butyric acid may give rise to undesirable taste and flavour.

In a much preferred aspect, the enzyme of the invention preferentially hydrolyses lipids containing long chain fatty acids, such as C₁₂ to C₂₀ fatty acids, as compared with short chain fatty acids such as C₄ to C₁₀ fatty acids. That is to say, the enzyme preferably has a relatively low activity on short chain fatty acids but is particularly active towards glycerides with long chain fatty acids.

Much by preference, the enzyme of the present invention is not active on short chain fatty acids.

The use of an enzyme with relatively low activity on short chain fatty acids may avoid or suppress the development of an undesirable flavour, which undesirable flavour may develop due to the release of short-chain fatty acids.

One implication of this selective substrate profile is that an enzyme can be selected which is particularly active in a given dough depending on the recipe and the lipid content thereof.

- 5 The enzyme having the properties as defined herein may be derived from a variety of sources including plants, animals and microorganisms such as bacterial and fungal species including yeast species. The enzyme of the invention may be derived from an organism that naturally produces the enzyme or it may be produced recombinantly by transforming an appropriate host cell with a gene coding for the enzyme. The enzyme can
10 be an enzyme that comprises in itself active sites for all of its enzyme activities, but it is also possible to construct hybrid enzymes having the enzyme activities as defined herein by synthesis or by using recombinant DNA technology.

Alternatively, an enzyme which does not, initially at least, have the specific properties as
15 defined herein can be modified, for example by altering the amino acid sequence thereof, in order to provide an enzyme having the properties as defined herein and having the desired substrate specificity. It is known in the art to modify enzymes by random mutagenesis (US 4,814,331, WO 93/01285 and WO 95/22615) and to modify lipolytic enzymes by site-specific mutagenesis (WO 97/04079) to obtain improved performance
20 thereof. The generally used concept has been to insert, delete or substitute amino acids within the structural part of the amino acid chain of a lipolytic enzyme in question. A suitable enzyme for modification is one that can hydrolyse ester bonds. Such enzymes include, for example, lipases, such as triacylglycerol lipase (EC 3.1.1.3), lipoprotein lipase (EC 3.1.1.34), monoglyceride lipase (EC 3.1.1.23), lysophospholipase, ferulic acid
25 esterase and esterase (EC 3.1.1.1, EC 3.1.1.2).

Suitable enzymes for modification may be derived from a variety of sources including plants, animals and microorganisms, such as bacterial and fungal species including yeast species. Examples of suitable enzymes for modification are the *Pseudomonas* lipases, for example from *P. cepacia* (US 5,290,694), *P. glumae* (Frenken N *et al* (1992) Appl.
30 *Envir. Microbiol.* 58 3787-3791), *P. pseudoalcaligenes* (EP 0 334 462) or *Pseudomonas* sp. Strain SD 705 (WO95/06720, EP 0 721 981, WO 96/27002, EP 0 812 910). Alternatively, suitable enzymes for modification may be for example fungal lipolytic enzymes, such as lipolytic enzymes of the *Humicola* family and the *Zygomycetes* family and fungal cutinases. The *Humicola* family of lipolytic enzymes consists of the lipase
35 from *H. lanuginosa* strain DSM 4109 and lipases having more than 50% homology with this lipase. The lipase from *H. lanuginosa* (synonym *Thermomyces lanuginosus*) is

described in EP 0 258 068 and EP 0 305 216, and has the amino acid sequence shown in positions 1-269 of SEQ ID NO. 2 of US 5,869,438.

Presently preferred enzymes for use in the invention are Lipase SP 972 and Lipase SP 5 979, the effect of which are described in detail in the examples below.

Most cereal flours contain nonpolar lipids including triglycerides and polar lipids including phospholipids and glycolipids which can serve as substrates for the enzyme of the invention. Accordingly, in one embodiment of the method, at least one of the nonpolar lipid, the 10 glycolipid such as a galactolipid including digalactosyldiglyceride (DGDG), and the phospholipid such as phosphatidylcholine (PC) is a naturally occurring (or endogenous) lipid component occurring in the flour used for the dough.

However, a flour dough may not contain sufficient amounts of all of the lipid substrates for 15 the enzyme of the invention. It is therefore within the scope of the invention to supplement the dough with at least one of a nonpolar lipid, a glycolipid and a phospholipid to provide sufficient substrates for the enzyme. It will be appreciated that the expression "sufficient substrate" implies that none of the three main types of lipid substrates is limiting for obtaining a dough improving or baked product improving effect as described above.

20

The supplementary lipid substrate for the enzyme of the invention may be a nonpolar lipid such as an acylglycerol. In accordance with the invention a variety of such lipids can be used such as e.g. vegetable oils, vegetable fats, animal oils, animal fats such as e.g. butterfat, and shortening. In this connection, a particularly useful lipid is an oil or a fat derived 25 from cereals such as oat oil. Oat oil typically contains, in addition to triglycerides, 5-25% phospholipids and 5-12% glycolipids. Oat oil can be fractionated to yield fractions having a high content of polar lipids.

It is thus one aspect of the method of the invention that one or more phospholipids can be 30 added to the dough. In this connection, useful phospholipids include phosphatidylinositol (PI), phosphatidylglycerol (PG), phosphatidylcholine (PC), lecithin and phosphatidylethanolamine (PE).

In accordance with the invention, the enzyme is added in an amount which is in the range 35 of 10 to 100,000 LUT/kg flour or in the range of 10 to 100,000 PLU/kg flour, the unit designations are those defined in the below examples, such as a range of 50 to 50,000

LUT or PLU/kg flour including a range of 100 to 10,000 LUT/kg flour or 100 to 10,000 PLU/kg flour.

The present invention may further advantageously provide a method for obtaining a
5 baked product having improved quality characteristics as defined above. Accordingly, in
one embodiment, the dough being prepared by the method of the invention is a bread
dough and the method comprises as a further step that the dough is baked to obtain a
baked product. One particularly desired property of baked bread products is a high
specific volume as defined in the examples. Accordingly, the addition of the enzyme of
10 the invention preferably results in an increase of the specific volume of the baked product
that is at least 10%, relative to a baked product made under identical conditions except
that the enzyme is not added. More preferably, the increase of the specific volume is at
least 20% such as at least 30%, e.g. at least 40%.

15 The present invention may further provide pasta doughs, noodle doughs and cake
doughs or batters and finished products made from such doughs or batters.

It is known in the art that enzymes other than lipases may contribute to improved dough
properties and quality of baked products. It is within the scope of the invention that, in
20 addition to the enzyme of the invention, at least one further enzyme is added to the
dough. Such further enzymes include starch degrading enzymes such as endo- or
exoamylases, pullulanases, debranching enzymes, hemicellulases including xylanases,
cellulases and oxidoreductases, e.g. glucose oxidase, lipases, phospholipases and
hexose oxidase.

25

It has been found that the enzyme of the invention may be particularly active against cer-
tain glycolipids such as e.g. galactolipids including digalactodiglyceride (DGDG) which is
converted into digalactomono-glyceride (DGMG) that is an effective surfactant. In useful
embodiments, the enzyme of the invention is therefore an enzyme that is capable of hy-
30 drolysing at least 25% of DGDG initially present in the dough and preferably at least 50%
of the DGDG is hydrolysed such as at least 60% or at least 75% hereof.

Another useful lipid substrate for the present enzyme is the phospholipid, phosphatidyl
choline (PC). Thus, in useful embodiments the enzyme is capable of degrading at least
35 25%, preferably at least 50% including at least 60% such as at least 75% of the PC ini-
tially present in the dough.

It is one advantageous aspect of the present enzymes that they may be more hydrolytically active against certain of the lipid substrate types as defined above than they are against other types. The enzymes may thus be relatively more active against polar lipids than they are against nonpolar triglycerides. This can be illustrated by analysing the amount of any of the lipid substrate types being hydrolysed and then construct a curve describing the relationship between the hydrolysis of any pairs of lipid substrates, e.g. triglycerides vs. glycolipid or triglycerides vs. phospholipids.

In specific embodiments, the enzyme of the invention is characterised in that the relationship between the ability of the enzyme to hydrolyse triglycerides and the ability to hydrolyse glycolipids can be described as a curve having a slope which is at least 1.0, such as at least 1.5 or at least 2.0, or in that the relationship between the ability of the enzyme to hydrolyse triglycerides and the ability to hydrolyse phospholipids can be described as a curve having a slope which is at least 0.1, such as e.g. at least 0.2, including at least 0.5 or at least 1.0.

In a further aspect, the invention provides a dough improving composition comprising an enzyme that, under dough conditions, is capable of hydrolysing a nonpolar lipid, a glycolipid and a phospholipid, and optionally at least one further dough component. Such a further dough component can e.g. be a further enzyme as defined above, including lipases or phospholipases not having the substrate profile of the present enzyme. Other suitable dough components which can be incorporated in the composition include cereal flours such as wheat flour, rice flour and corn flour, yeast, chemical leavening agents, dough strengthening agents such as oxidoreductases and ascorbates, emulsifiers, sugars, acylglycerols of the types mentioned above, phospholipids such as soy lecithin and egg lecithin, glycolipids and salts.

In further aspects of the invention there is provided a method of preparing a dough as defined above wherein the enzyme is added in a composition as described above and a dough that is obtained in accordance with the methods of the invention. Such a dough can be a fresh dough, optionally packaged in a controlled atmosphere to keep it fresh or it may be a frozen dough.

Although some enzymes having the specific properties as defined herein can be readily identified by persons skilled in the art, the present invention further provides a method for identifying enzymes capable of hydrolysing a nonpolar lipid, a glycolipid and a phospholipid or for identifying enzymes eligible for development into enzymes capable of

hydrolysing a nonpolar lipid, a glycolipid and a phospholipid. One such eligible enzyme for development into an enzyme in accordance with the present invention is the lipase from *Aspergillus niger*, which lipase is disclosed in WO98/45453 (incorporated herein by reference).

5

The present invention further provides a method for developing enzymes capable of hydrolysing a nonpolar lipid, a glycolipid and a phospholipid.

Cloning a nucleotide sequence encoding an enzyme

10

A nucleotide sequence encoding either an enzyme which has the specific properties as defined herein or an enzyme which is suitable for modification may be isolated from any cell or organism producing said enzyme. Various methods are well known within the art for the isolation of nucleotide sequences.

15

For example, a genomic DNA and/or cDNA library may be constructed using chromosomal DNA or messenger RNA from the organism producing the enzyme. If the amino acid sequence of the enzyme is known, labelled oligonucleotide probes may be synthesised and used to identify enzyme-encoding clones from the genomic library
20 prepared from the organism. Alternatively, a labelled oligonucleotide probe containing sequences homologous to another known enzyme gene could be used to identify enzyme-encoding clones. In the latter case, hybridisation and washing conditions of lower stringency are used.

25 Alternatively, enzyme-encoding clones could be identified by inserting fragments of genomic DNA into an expression vector, such as a plasmid, transforming enzyme-negative bacteria with the resulting genomic DNA library, and then plating the transformed bacteria onto agar containing a substrate for enzyme (i.e. maltose), thereby allowing clones expressing the enzyme to be identified.

30

In a yet further alternative, the nucleotide sequence encoding the enzyme may be prepared synthetically by established standard methods, e.g. the phosphoroamidite method described by Beucage S.L. *et al* (1981) *Tetrahedron Letters* 22, p 1859-1869, or the method described by Matthes *et al* (1984) *EMBO J.* 3, p 801-805. In the
35 phosphoroamidite method, oligonucleotides are synthesised, e.g. in an automatic DNA synthesiser, purified, annealed, ligated and cloned in appropriate vectors.

The nucleotide sequence may be of mixed genomic and synthetic origin, mixed synthetic and cDNA origin, or mixed genomic and cDNA origin, prepared by ligating fragments of synthetic, genomic or cDNA origin (as appropriate) in accordance with standard techniques. Each ligated fragment corresponds to various parts of the entire nucleotide
5 sequence. The DNA sequence may also be prepared by polymerase chain reaction (PCR) using specific primers, for instance as described in US 4,683,202 or in Saiki R K *et al* (Science (1988) 239, pp 487-491).

Nucleotide sequence

10

The present invention also encompasses nucleotide sequences encoding enzymes having the specific properties as defined herein. The term "nucleotide sequence" as used herein refers to an oligonucleotide sequence or polynucleotide sequence, and variant, homologues, fragments and derivatives thereof (such as portions thereof). The nucleotide sequence may
15 be of genomic or synthetic or recombinant origin, which may be double-stranded or single-stranded whether representing the sense or antisense strand.

The term "nucleotide sequence" in relation to the present invention includes genomic DNA, cDNA, synthetic DNA, and RNA. Preferably it means DNA, more preferably cDNA for the
20 coding sequence of the present invention.

In a preferred embodiment, the nucleotide sequence *per se* of the present invention does not cover the native nucleotide sequence according to the present invention in its natural environment when it is linked to its naturally associated sequence(s) that is/are also in
25 its/their natural environment. For ease of reference, we shall call this preferred embodiment the "non-native nucleotide sequence". In this regard, the term "native nucleotide sequence" means an entire nucleotide sequence that is in its native environment and when operatively linked to an entire promoter with which it is naturally associated, which promoter is also in its native environment. Thus, the enzyme of the present invention can be expressed by a
30 nucleotide sequence in its native organism but wherein the nucleotide sequence is not under the control of the promoter with which it is naturally associated within that organism.

The enzyme of the present invention may be used in conjunction with other enzymes. Thus the present invention also covers a combination of enzymes wherein the combination
35 comprises the enzyme of the present invention and another enzyme, which may be another enzyme according to the present invention.

Preferably the enzyme is not a native enzyme. In this regard, the term "native enzyme" means an entire enzyme that is in its native environment and when it has been expressed by its native nucleotide sequence.

- 5 Typically, the nucleotide sequence of the present invention is prepared using recombinant DNA techniques (i.e. recombinant DNA). However, in an alternative embodiment of the invention, the nucleotide sequence could be synthesised, in whole or in part, using chemical methods well known in the art (see Caruthers MH *et al* (1980) Nuc Acids Res Symp Ser 215-23 and Horn T *et al* (1980) Nuc Acids Res Symp Ser 225-232).

10 Amino acid sequences

The present invention also encompasses amino acid sequences of enzymes having the specific properties as defined herein.

- 15 As used herein, the term "amino acid sequence" is synonymous with the term "polypeptide" and/or the term "protein". In some instances, the term "amino acid sequence" is synonymous with the term "peptide". In some instances, the term "amino acid sequence" is synonymous with the term "enzyme".
- 20 The amino acid sequence may be prepared/isolated from a suitable source, or it may be made synthetically or it may be prepared by use of recombinant DNA techniques.

Variants/homologues/derivatives

- 25 The present invention also encompasses the use of variants, homologues and derivatives of any amino acid sequence of an enzyme of the present invention or of any nucleotide sequence encoding such an enzyme. Here, the term "homologue" means an entity having a certain homology with the subject amino acid sequences and the subject nucleotide sequences. Here, the term "homology" can be equated with "identity".

30

- In the present context, an homologous sequence is taken to include an amino acid sequence which may be at least 75, 85 or 90% identical, preferably at least 95 or 98% identical to the subject sequence. Typically, the homologues will comprise the same active sites etc. as the subject amino acid sequence. Although homology can also be
- 35 considered in terms of similarity (i.e. amino acid residues having similar chemical properties/functions), in the context of the present invention it is preferred to express homology in terms of sequence identity.

In the present context, an homologous sequence is taken to include a nucleotide sequence which may be at least 75, 85 or 90% identical, preferably at least 95 or 98% identical to a nucleotide sequence encoding an enzyme of the present invention (the
5 subject sequence). Typically, the homologues will comprise the same sequences that code for the active sites etc. as the subject sequence. Although homology can also be considered in terms of similarity (i.e. amino acid residues having similar chemical properties/functions), in the context of the present invention it is preferred to express homology in terms of sequence identity.

10

Homology comparisons can be conducted by eye, or more usually, with the aid of readily available sequence comparison programs. These commercially available computer programs can calculate % homology between two or more sequences.

15 % homology may be calculated over contiguous sequences, i.e. one sequence is aligned with the other sequence and each amino acid in one sequence is directly compared with the corresponding amino acid in the other sequence, one residue at a time. This is called an "ungapped" alignment. Typically, such ungapped alignments are performed only over a relatively short number of residues.

20

Although this is a very simple and consistent method, it fails to take into consideration that, for example, in an otherwise identical pair of sequences, one insertion or deletion will cause the following amino acid residues to be put out of alignment, thus potentially resulting in a large reduction in % homology when a global alignment is performed.

25 Consequently, most sequence comparison methods are designed to produce optimal alignments that take into consideration possible insertions and deletions without penalising unduly the overall homology score. This is achieved by inserting "gaps" in the sequence alignment to try to maximise local homology.

30 However, these more complex methods assign "gap penalties" to each gap that occurs in the alignment so that, for the same number of identical amino acids, a sequence alignment with as few gaps as possible - reflecting higher relatedness between the two compared sequences - will achieve a higher score than one with many gaps. "Affine gap costs" are typically used that charge a relatively high cost for the existence of a gap and a
35 smaller penalty for each subsequent residue in the gap. This is the most commonly used gap scoring system. High gap penalties will of course produce optimised alignments with fewer gaps. Most alignment programs allow the gap penalties to be modified. However,

it is preferred to use the default values when using such software for sequence comparisons. For example when using the GCG Wisconsin Bestfit package the default gap penalty for amino acid sequences is -12 for a gap and -4 for each extension.

5 Calculation of maximum % homology therefore firstly requires the production of an optimal alignment, taking into consideration gap penalties. A suitable computer program for carrying out such an alignment is the GCG Wisconsin Bestfit package (Devereux *et al*
1984 *Nuc. Acids Research* 12 p387). Examples of other software than can perform
sequence comparisons include, but are not limited to, the BLAST package (see Ausubel
10 *et al* 1999 *Short Protocols in Molecular Biology*, 4th Ed - Chapter 18), FASTA (Altschul *et al*
1990 *J. Mol. Biol.* 403-410) and the GENWORKS suite of comparison tools. Both
BLAST and FASTA are available for offline and online searching (see Ausubel *et al* 1999,
pages 7-58 to 7-60). However, for some applications, it is preferred to use the GCG
Bestfit program. A new tool, called BLAST 2 Sequences is also available for comparing
15 protein and nucleotide sequence (see *FEMS Microbiol Lett* 1999 174(2): 247-50; *FEMS*
Microbiol Lett 1999 177(1): 187-8 and tatiana@ncbi.nlm.nih.gov).

Although the final % homology can be measured in terms of identity, the alignment
process itself is typically not based on an all-or-nothing pair comparison. Instead, a
20 scaled similarity score matrix is generally used that assigns scores to each pairwise
comparison based on chemical similarity or evolutionary distance. An example of such a
matrix commonly used is the BLOSUM62 matrix - the default matrix for the BLAST suite
of programs. GCG Wisconsin programs generally use either the public default values or a
custom symbol comparison table if supplied (see user manual for further details). For
25 some applications, it is preferred to use the public default values for the GCG package, or
in the case of other software, the default matrix, such as BLOSUM62.

Once the software has produced an optimal alignment, it is possible to calculate %
homology, preferably % sequence identity. The software typically does this as part of the
30 sequence comparison and generates a numerical result.

The sequences may also have deletions, insertions or substitutions of amino acid
residues which produce a silent change and result in a functionally equivalent substance.
Deliberate amino acid substitutions may be made on the basis of similarity in polarity,
35 charge, solubility, hydrophobicity, hydrophilicity, and/or the amphipathic nature of the
residues as long as the secondary binding activity of the substance is retained. For
example, negatively charged amino acids include aspartic acid and glutamic acid;

positively charged amino acids include lysine and arginine; and amino acids with uncharged polar head groups having similar hydrophilicity values include leucine, isoleucine, valine, glycine, alanine, asparagine, glutamine, serine, threonine, phenylalanine, and tyrosine.

5

Conservative substitutions may be made, for example according to the Table below. Amino acids in the same block in the second column and preferably in the same line in the third column may be substituted for each other:

ALIPHATIC	Non-polar	GAP
		ILV
	Polar - uncharged	CSTM
		NQ
	Polar - charged	DE
		KR
AROMATIC		HFVY

- 10 The present invention also encompasses homologous substitution (substitution and replacement are both used herein to mean the interchange of an existing amino acid residue, with an alternative residue) that may occur i.e. like-for-like substitution such as basic for basic, acidic for acidic, polar for polar etc. Non-homologous substitution may also occur i.e. from one class of residue to another or alternatively involving the inclusion
- 15 of unnatural amino acids such as ornithine (hereinafter referred to as Z), diaminobutyric acid ornithine (hereinafter referred to as B), norleucine ornithine (hereinafter referred to as O), pyrilylalanine, thienylalanine, naphthylalanine and phenylglycine.

Replacements may also be made by unnatural amino acids include; alpha* and alpha-
 20 disubstituted* amino acids, N-alkyl amino acids*, lactic acid*, halide derivatives of natural amino acids such as trifluorotyrosine*, p-Cl-phenylalanine*, p-Br-phenylalanine*, p-I-phenylalanine*, L-allyl-glycine*, beta-alanine*, L-alpha-amino butyric acid*, L-gamma-amino butyric acid*, L-alpha-amino isobutyric acid*, L-epsilon-amino caproic acid*, 7-amino heptanoic acid*, L-methionine sulfone*, L-norleucine*, L-norvaline*, p-nitro-L-phenylalanine*, L-
 25 hydroxyproline#, L-thioprolin#, methyl derivatives of phenylalanine (Phe) such as 4-methyl-Phe*, pentamethyl-Phe*, L-Phe (4-amino)#, L-Tyr (methyl)*, L-Phe (4-isopropyl)*, L-Tic (1,2,3,4-tetrahydroisoquinoline-3-carboxyl acid)*, L-diaminopropionic acid* and L-Phe (4-benzyl)*. The notation * has been utilised for the purpose of the discussion above (relating to homologous or non-homologous substitution), to indicate the hydrophobic
 30 nature of the derivative whereas # has been utilised to indicate the hydrophilic nature of

the derivative, #* indicates amphipathic characteristics.

Variant amino acid sequences may include suitable spacer groups that may be inserted between any two amino acid residues of the sequence including alkyl groups such as 5 methyl, ethyl or propyl groups in addition to amino acid spacers such as glycine or β -alanine residues. A further form of variation, involves the presence of one or more amino acid residues in peptoid form, will be well understood by those skilled in the art. For the avoidance of doubt, "the peptoid form" is used to refer to variant amino acid residues wherein the α -carbon substituent group is on the residue's nitrogen atom rather than the 10 α -carbon. Processes for preparing peptides in the peptoid form are known in the art, for example Simon RJ et al., PNAS (1992) 89(20), 9367-9371 and Horwell DC, Trends Biotechnol. (1995) 13(4), 132-134.

The nucleotide sequences for use in the present invention may include within them 15 synthetic or modified nucleotides. A number of different types of modification to oligonucleotides are known in the art. These include methylphosphonate and phosphorothioate backbones and/or the addition of acridine or polylysine chains at the 3' and/or 5' ends of the molecule. For the purposes of the present invention, it is to be understood that the nucleotide sequences described herein may be modified by any 20 method available in the art. Such modifications may be carried out in order to enhance the *in vivo* activity or life span of nucleotide sequences of the present invention.

The present invention also encompasses the use of nucleotide sequences that are complementary to the sequences presented herein, or any derivative, fragment or 25 derivative thereof. If the sequence is complementary to a fragment thereof then that sequence can be used as a probe to identify similar coding sequences in other organisms etc.

Polynucleotides which are not 100% homologous to the sequences of the present invention 30 but fall within the scope of the invention can be obtained in a number of ways. Other variants of the sequences described herein may be obtained for example by probing DNA libraries made from a range of individuals, for example individuals from different populations. In addition, other viral/bacterial, or cellular homologues particularly cellular homologues found in mammalian cells (e.g. rat, mouse, bovine and primate cells), may be obtained and 35 such homologues and fragments thereof in general will be capable of selectively hybridising to the sequences shown in the sequence listing herein. Such sequences may be obtained by probing cDNA libraries made from or genomic DNA libraries from other animal species.

and probing such libraries with probes comprising all or part of any one of the sequences in the attached sequence listings under conditions of medium to high stringency. Similar considerations apply to obtaining species homologues and allelic variants of the polypeptide or nucleotide sequences of the invention.

5

Variants and strain/species homologues may also be obtained using degenerate PCR which will use primers designed to target sequences within the variants and homologues encoding conserved amino acid sequences within the sequences of the present invention. Conserved sequences can be predicted, for example, by aligning the amino acid sequences from
10 several variants/homologues. Sequence alignments can be performed using computer software known in the art. For example the GCG Wisconsin PileUp program is widely used.

The primers used in degenerate PCR will contain one or more degenerate positions and will be used at stringency conditions lower than those used for cloning sequences with single
15 sequence primers against known sequences.

Alternatively, such polynucleotides may be obtained by site directed mutagenesis of characterised sequences. This may be useful where for example silent codon sequence changes are required to optimise codon preferences for a particular host cell in which the
20 polynucleotide sequences are being expressed. Other sequence changes may be desired in order to introduce restriction enzyme recognition sites, or to alter the property or function of the polypeptides encoded by the polynucleotides.

Polynucleotides (nucleotide sequences) of the invention may be used to produce a primer,
25 e.g. a PCR primer, a primer for an alternative amplification reaction, a probe e.g. labelled with a revealing label by conventional means using radioactive or non-radioactive labels, or the polynucleotides may be cloned into vectors. Such primers, probes and other fragments will be at least 15, preferably at least 20, for example at least 25, 30 or 40 nucleotides in length, and are also encompassed by the term polynucleotides of the invention as used
30 herein.

Polynucleotides such as DNA polynucleotides and probes according to the invention may be produced recombinantly, synthetically, or by any means available to those of skill in the art. They may also be cloned by standard techniques.

35

In general, primers will be produced by synthetic means, involving a stepwise manufacture of the desired nucleic acid sequence one nucleotide at a time. Techniques for accomplishing this using automated techniques are readily available in the art.

- 5 Longer polynucleotides will generally be produced using recombinant means, for example using a PCR (polymerase chain reaction) cloning techniques. This will involve making a pair of primers (e.g. of about 15 to 30 nucleotides) flanking a region of the lipid targeting sequence which it is desired to clone, bringing the primers into contact with mRNA or cDNA obtained from an animal or human cell, performing a polymerase chain reaction under
10 conditions which bring about amplification of the desired region, isolating the amplified fragment (e.g. by purifying the reaction mixture on an agarose gel) and recovering the amplified DNA. The primers may be designed to contain suitable restriction enzyme recognition sites so that the amplified DNA can be cloned into a suitable cloning vector.

15 Hybridisation

The present invention also encompasses sequences that are complementary to the sequences of the present invention or sequences that are capable of hybridising either to the sequences of the present invention or to sequences that are complementary thereto.

20

The term "hybridisation" as used herein shall include "the process by which a strand of nucleic acid joins with a complementary strand through base pairing" as well as the process of amplification as carried out in polymerase chain reaction (PCR) technologies.

- 25 The present invention also encompasses the use of nucleotide sequences that are capable of hybridising to the sequences that are complementary to the sequences presented herein, or any derivative, fragment or derivative thereof.

The term "variant" also encompasses sequences that are complementary to sequences
30 that are capable of hybridising to the nucleotide sequences presented herein.

Preferably, the term "variant" encompasses sequences that are complementary to sequences that are capable of hybridising under stringent conditions (e.g. 50°C and 0.2xSSC {1xSSC = 0.15 M NaCl, 0.015 M Na₂citrate pH 7.0}) to the nucleotide
35 sequences presented herein.

More preferably, the term "variant" encompasses sequences that are complementary to sequences that are capable of hybridising under high stringent conditions (e.g. 65°C and 0.1xSSC {1xSSC = 0.15 M NaCl, 0.015 M Na₂citrate pH 7.0}) to the nucleotide sequences presented herein.

5

The present invention also relates to nucleotide sequences that can hybridise to the nucleotide sequences of the present invention (including complementary sequences of those presented herein).

10 The present invention also relates to nucleotide sequences that are complementary to sequences that can hybridise to the nucleotide sequences of the present invention (including complementary sequences of those presented herein).

Also included within the scope of the present invention are polynucleotide sequences that
15 are capable of hybridising to the nucleotide sequences presented herein under conditions of intermediate to maximal stringency.

In a preferred aspect, the present invention covers nucleotide sequences that can hybridise to the nucleotide sequence of the present invention, or the complement thereof,
20 under stringent conditions (e.g. 50°C and 0.2xSSC).

In a more preferred aspect, the present invention covers nucleotide sequences that can hybridise to the nucleotide sequence of the present invention, or the complement thereof, under high stringent conditions (e.g. 65°C and 0.1xSSC).

25

Site-directed mutagenesis

Once an enzyme-encoding nucleotide sequence has been isolated, it may be desirable to mutate the sequence in order to prepare an enzyme of the present invention.

30

Mutations may be introduced using synthetic oligonucleotides. These oligonucleotides contain nucleotide sequences flanking the desired mutation sites.

A suitable method is disclosed in Morinaga *et al* (Biotechnology (1984) 2, p646-649),
35 wherein a single-stranded gap of DNA, the enzyme-encoding sequence, is created in a vector carrying the enzyme gene. The synthetic nucleotide, bearing the desired mutation, is then annealed to a homologous portion of the single-stranded DNA. The remaining gap

is then filled in with DNA polymerase I (Klenow fragment) and the construct is ligated using T4 ligase.

US 4,760,025 discloses the introduction of oligonucleotides encoding multiple mutations 5 by performing minor alterations of the cassette. However, an even greater variety of mutations can be introduced at any one time by the above mentioned Morinaga method, because a multitude of oligonucleotides, of various lengths, can be introduced.

Another method of introducing mutations into enzyme-encoding nucleotide sequences is 10 described in Nelson and Long (Analytical Biochemistry (1989), 180, p 147-151). This method involves the 3-step generation of a PCR fragment containing the desired mutation introduced by using a chemically synthesised DNA strand as one of the primers in the PCR reactions. From the PCR-generated fragment, a DNA fragment carrying the mutation may be isolated by cleavage with restriction endonucleases and reinserted into 15 an expression plasmid.

Furthermore, Sierks *et al* (Protein Eng (1989) 2, 621-625 and Protein Eng (1990) 3, 193-198) describes site-directed mutagenesis in *Aspergillus glucoamylase*.

20 Expression of enzymes

The nucleotide sequence for use in the present invention can be incorporated into a recombinant replicable vector. The vector may be used to replicate and express the nucleotide sequence, in enzyme form, in and/or from a compatible host cell. Expression 25 may be controlled using control sequences which include promoters/enhancers and other expression regulation signals. Prokaryotic promoters and promoters functional in eukaryotic cells may be used. Tissue specific or stimuli specific promoters may be used. Chimeric promoters may also be used comprising sequence elements from two or more different promoters described above.

30

The enzyme produced by a host recombinant cell by expression of the nucleotide sequence may be secreted or may be contained intracellularly depending on the sequence and/or the vector used. The coding sequences can be designed with signal sequences which direct secretion of the substance coding sequences through a particular 35 prokaryotic or eukaryotic cell membrane.

Expression vector

The term "expression vector" means a construct capable of *in vivo* or *in vitro* expression.

- 5 Preferably, the expression vector is incorporated in the genome of the organism. The term "incorporated" preferably covers stable incorporation into the genome.

10 Preferably, the vector of the present invention comprises a construct according to the present invention. Alternatively expressed, preferably the nucleotide sequence of the present invention is present in a vector and wherein the nucleotide sequence is operably linked to regulatory sequences such that the regulatory sequences are capable of providing the expression of the nucleotide sequence by a suitable host organism, i.e. the vector is an expression vector.

- 15 The vectors of the present invention may be transformed into a suitable host cell as described below to provide for expression of a polypeptide of the present invention. Thus, in a further aspect the invention provides a process for preparing polypeptides for subsequent use according to the present invention which comprises cultivating a host cell transformed or transfected with an expression vector as described above under
20 conditions to provide for expression by the vector of a coding sequence encoding the polypeptides, and recovering the expressed polypeptides.

The vectors may be for example, plasmid, virus or phage vectors provided with an origin of replication, optionally a promoter for the expression of the said polynucleotide and
25 optionally a regulator of the promoter. The choice of vector will often depend on the host cell into which it is to be introduced.

The vectors of the present invention may contain one or more selectable marker genes. The most suitable selection systems for industrial micro-organisms are those formed by
30 the group of selection markers which do not require a mutation in the host organism. Suitable selection markers may be the *dal* genes from *B. subtilis* or *B. licheniformis*, or one which confers antibiotic resistance such as ampicillin, kanamycin, chloramphenicol or tetracyclin resistance. Alternative selection markers may be the *Aspergillus* selection markers such as *amdS*, *argB*, *niaD* and *sC*, or a marker giving rise to hygromycin
35 resistance. Examples of other fungal selection markers are the genes for ATP synthetase, subunit 9 (*atfC*), orotidine-5'-phosphate-decarboxylase (*pvvA*), phleomycin and benomyl resistance (*benA*). Examples of non-fungal selection markers are the

bacterial G418 resistance gene (this may also be used in yeast, but not in filamentous fungi), the ampicillin resistance gene (*E. coli*), the neomycin resistance gene (*Bacillus*) and the *E. coli uidA* gene, coding for β -glucuronidase (GUS). Further suitable selection markers include the *dal* genes from *B. subtilis* or *B. licheniformis*. Alternatively, the
5 selection may be accomplished by co-transformation (as described in WO91/17243).

Vectors may be used *in vitro*, for example for the production of RNA or used to transfect or transform a host cell.

10 Thus, nucleotide sequences for use according to the present invention can be incorporated into a recombinant vector (typically a replicable vector), for example a cloning or expression vector. The vector may be used to replicate the nucleic acid in a compatible host cell. Thus in a further embodiment, the invention provides a method of making nucleotide sequences of the present invention by introducing a nucleotide
15 sequence of the present invention into a replicable vector, introducing the vector into a compatible host cell, and growing the host cell under conditions which bring about replication of the vector. The vector may be recovered from the host cell. Suitable host cells are described below in connection with expression vectors.

20 The procedures used to ligate a DNA construct of the invention encoding an enzyme which has the specific properties as defined herein, and the regulatory sequences, and to insert them into suitable vectors containing the information necessary for replication, are well known to persons skilled in the art (for instance see Sambrook *et al* Molecular Cloning: A laboratory Manual, 2nd Ed. (1989)).

25

The vector may further comprise a nucleotide sequence enabling the vector to replicate in the host cell in question. Examples of such sequences are the origins of replication of plasmids pUC19, pACYC177, pUB110, pE194, pAMB1 and pIJ702.

30 Regulatory sequences

In some applications, the nucleotide sequence for use in the present invention is operably linked to a regulatory sequence which is capable of providing for the expression of the nucleotide sequence, such as by the chosen host cell. By way of example, the present
35 invention covers a vector comprising the nucleotide sequence of the present invention operably linked to such a regulatory sequence, i.e. the vector is an expression vector.

The term "operably linked" refers to a juxtaposition wherein the components described are in a relationship permitting them to function in their intended manner. A regulatory sequence "operably linked" to a coding sequence is ligated in such a way that expression of the coding sequence is achieved under condition compatible with the control
5 sequences.

The term "regulatory sequences" includes promoters and enhancers and other expression regulation signals.

10 The term "promoter" is used in the normal sense of the art, e.g. an RNA polymerase binding site.

Enhanced expression of the nucleotide sequence encoding the enzyme of the present invention may also be achieved by the selection of heterologous regulatory regions, e.g.
15 promoter, secretion leader and terminator regions, which serve to increase expression and, if desired, secretion levels of the protein of interest from the chosen expression host and/or to provide for the inducible control of the expression of the enzyme of the present invention. In eukaryotes, polyadenylation sequences may be operably connected to the nucleotide sequence encoding the enzyme.

20

Preferably, the nucleotide sequence of the present invention may be operably linked to at least a promoter.

Aside from the promoter native to the gene encoding the nucleotide sequence of the
25 present invention, other promoters may be used to direct expression of the polypeptide of the present invention. The promoter may be selected for its efficiency in directing the expression of the nucleotide sequence of the present invention in the desired expression host.

30 In another embodiment, a constitutive promoter may be selected to direct the expression of the desired nucleotide sequence of the present invention. Such an expression construct may provide additional advantages since it circumvents the need to culture the expression hosts on a medium containing an inducing substrate.

35 Examples of strong constitutive and/or inducible promoters which are preferred for use in fungal expression hosts are those which are obtainable from the fungal genes for xylanase (*xlnA*), phytase, ATP-synthetase, subunit 9 (*olc*), triose phosphate isomerase

(*tpi*), alcohol dehydrogenase (*AdhA*), α -amylase (*amy*), amyloglucosidase (AG - from the *glaA* gene), acetamidase (*amdS*) and glyceraldehyde-3-phosphate dehydrogenase (*gpd*) promoters. Other examples of useful promoters for transcription in a fungal host are those derived from the gene encoding *A. oryzae* TAKA amylase, the TPI (triose phosphate isomerase) promoter from *S. cerevisiae* (Alber et al (1982) J. Mol. Appl. Genet. 1, p419-434), *Rhizomucor miehei* aspartic proteinase, *A. niger* neutral α -amylase, *A. niger* acid stable α -amylase, *A. niger* glucoamylase, *Rhizomucor miehei* lipase, *A. oryzae* alkaline protease, *A. oryzae* triose phosphate isomerase or *A. nidulans* acetamidase.

10

Examples of strong yeast promoters are those obtainable from the genes for alcohol dehydrogenase, lactase, 3-phosphoglycerate kinase and triosephosphate isomerase.

Examples of strong bacterial promoters are the α -amylase and *SP02* promoters as well as promoters from extracellular protease genes. Examples of other suitable promoters for directing the transcription of the nucleotide sequence especially in a bacterial host are the promoters of the *lac* operon of *E. coli*, the *Streptomyces coelicolor* agarase gene *dagA* promoters, the promoters of the *Bacillus licheniformis* α -amylase gene (*amyL*), the promoters of the *Bacillus stearothermophilus* maltogenic amylase gene (*amyM*), the promoters of the *Bacillus amyloliquefaciens* α -amylase (*amyQ*), the promoters of the *Bacillus subtilis* *xylA* and *xylB* genes.

Hybrid promoters may also be used to improve inducible regulation of the expression construct.

25

The promoter can additionally include features to ensure or to increase expression in a suitable host. For example, the features can be conserved regions such as a Pribnow Box or a TATA box. The promoter may even contain other sequences to affect (such as to maintain, enhance, decrease) the levels of expression of the nucleotide sequence of the present invention. For example, suitable other sequences include the *Sh1*-intron or an ADH intron. Other sequences include inducible elements - such as temperature, chemical, light or stress inducible elements. Also, suitable elements to enhance transcription or translation may be present. An example of the latter element is the TMV 5' signal sequence (see Sleat 1987 Gene 217, 217-225 and Dawson 1993 Plant Mol. Biol. 23: 97).

Constructs

The term "construct" - which is synonymous with terms such as "conjugate", "cassette" and "hybrid" - includes a nucleotide sequence for use according to the present invention directly
5 or indirectly attached to a promoter. An example of an indirect attachment is the provision of a suitable spacer group such as an intron sequence, such as the Sh1-intron or the ADH intron, intermediate the promoter and the nucleotide sequence of the present invention. The same is true for the term "used" in relation to the present invention which includes direct or indirect attachment. In some cases, the terms do not cover the natural combination of the
10 nucleotide sequence coding for the protein ordinarily associated with the wild type gene promoter and when they are both in their natural environment.

The construct may even contain or express a marker which allows for the selection of the genetic construct in, for example, a bacterium, preferably of the genus *Bacillus*, such as
15 *Bacillus subtilis*, or plants into which it has been transferred. Various markers exist which may be used, such as for example those encoding mannose-6-phosphate isomerase (especially for plants) or those markers that provide for antibiotic resistance - e.g. resistance to G418, hygromycin, bleomycin, kanamycin and gentamycin.

20 For some applications, preferably the construct of the present invention comprises at least the nucleotide sequence of the present invention operably linked to a promoter.

Host cells

25

The term "host cell" - in relation to the present invention includes any cell that comprises either the nucleotide sequence or an expression vector as described above and which is used in the recombinant production of an enzyme having the specific properties as defined herein.

30

Thus, a further embodiment of the present invention provides host cells transformed or transfected with a nucleotide sequence that expresses the enzyme of the present invention. Preferably said nucleotide sequence is carried in a vector for the replication and expression of the nucleotide sequence. The cells will be chosen to be compatible
35 with the said vector and may for example be prokaryotic (for example bacterial), fungal, yeast or plant cells.

The gram negative bacterium *E. coli* is widely used as a host for heterologous gene expression. However, large amounts of heterologous protein tend to accumulate inside the cell. Subsequent purification of the desired protein from the bulk of *E. coli* intracellular
5 proteins can sometimes be difficult.

In contrast to *E. coli*, Gram positive bacteria from the genus *Bacillus*, such as *B. subtilis*, *B. licheniformis*, *B. lentus*, *B. brevis*, *B. stearothermophilus*, *B. alkalophilus*, *B. amyloliquefaciens*, *B. coagulans*, *B. circulans*, *B. lautus*, *B. megaterium*, *B. thuringiensis*,
10 *Streptomyces lividans* or *S. murinus*, may be very suitable as heterologous hosts because of their capability to secrete proteins into the culture medium. Other bacteria that may be suitable as hosts are those from the genera *Streptomyces* and *Pseudomonas*.

15 Depending on the nature of the nucleotide sequence encoding the enzyme of the present invention, and/or the desirability for further processing of the expressed protein, eukaryotic hosts such as yeasts or other fungi may be preferred. In general, yeast cells are preferred over fungal cells because they are easier to manipulate. However, some proteins are either poorly secreted from the yeast cell, or in some cases are not
20 processed properly (e.g. hyperglycosylation in yeast). In these instances, a different fungal host organism should be selected.

Suitable yeast organisms may be selected from the species of *Kluyveromyces*, *Saccharomyces* or *Schizosaccharomyces*, e.g. *Saccharomyces cerevisiae*, or *Hansenula*
25 (disclosed in UK Patent Application No. 9927801.2).

Suitable filamentous fungus may be for example a strain belonging to a species of *Aspergillus*, such as *Aspergillus oryzae* or *Aspergillus niger*, or a strain of *Fusarium oxysporium*, *Fusarium graminearum* (in the perfect state named *Gibberella zeae*,
30 previously *Sphaeria zeae*, synonym with *Gibberella roseum* and *Gibberella roseum* f. sp. *Cerealis*), or *Fusarium sulphureum* (in the perfect state named *Gibberella puricaris*, synonym with *Fusarium trichothercioides*, *Fusarium bactridioides*, *Fusarium sambucium*, *Fusarium roseum* and *Fusarium roseum* var. *graminearum*), *Fusarium cerealis* (synonym with *Fusarium crookwellense*) or *Fusarium venenatum*.

35

By way of example, typical expression hosts may be selected from *Aspergillus niger*, *Aspergillus niger* var. *tubigenis*, *Aspergillus niger* var. *awamori*, *Aspergillus aculealis*.

Aspergillus nidulans, *Aspergillus oryzae*, *Trichoderma reesei*, *Bacillus subtilis*, *Bacillus licheniformis*, *Bacillus amyloliquefaciens*, *Kluyveromyces lactis* and *Saccharomyces cerevisiae*.

- 5 The use of suitable host cells - such as yeast, fungal and plant host cells - may provide for post-translational modifications (e.g. myristoylation, glycosylation, truncation, lipidation and tyrosine, serine or threonine phosphorylation) as may be needed to confer optimal biological activity on recombinant expression products of the present invention.
- 10 The host cell may be a protease deficient or protease minus strain. This may for example be the protease deficient strain *Aspergillus oryzae* JaL 125 having the alkaline protease gene named "alp" deleted. This strain is described in WO97/35956.

15 Organism

The term "organism" in relation to the present invention includes any organism that could comprise the nucleotide sequence coding for the enzyme according to the present invention and/or products obtained therefrom, and/or wherein a promoter can allow expression of the
20 nucleotide sequence according to the present invention when present in the organism.

Suitable organisms may include a prokaryote, fungus, yeast or a plant.

The term "transgenic organism" in relation to the present invention includes any organism
25 that comprises the nucleotide sequence coding for the enzyme according to the present invention and/or the products obtained therefrom, and/or wherein a promoter can allow expression of the nucleotide sequence according to the present invention within the organism. Preferably the nucleotide sequence is incorporated in the genome of the organism.

30

The term "transgenic organism" does not cover native nucleotide coding sequences in their natural environment when they are under the control of their native promoter which is also in its natural environment.

35 Therefore, the transgenic organism of the present invention includes an organism comprising any one of, or combinations of, the nucleotide sequence coding for the enzyme according to the present invention, constructs according to the present invention, vectors

according to the present invention, plasmids according to the present invention, cells according to the present invention, tissues according to the present invention, or the products thereof. For example the transgenic organism can also comprise the nucleotide sequence coding for the enzyme of the present invention under the control of a heterologous
5 promoter.

Transformation of host cells/organism

As indicated earlier, the host organism can be a prokaryotic or a eukaryotic organism.
10 Examples of suitable prokaryotic hosts include *E. coli* and *Bacillus subtilis*. Teachings on the transformation of prokaryotic hosts is well documented in the art, for example see Sambrook *et al* (Molecular Cloning: A Laboratory Manual, 2nd edition, 1989, Cold Spring Harbor Laboratory Press) and Ausubel *et al.*, Current Protocols in Molecular Biology (1995), John Wiley & Sons, Inc.

15

If a prokaryotic host is used then the nucleotide sequence may need to be suitably modified before transformation - such as by removal of introns.

In another embodiment the transgenic organism can be a yeast. In this regard, yeast
20 have also been widely used as a vehicle for heterologous gene expression. The species *Saccharomyces cerevisiae* has a long history of industrial use, including its use for heterologous gene expression. Expression of heterologous genes in *Saccharomyces cerevisiae* has been reviewed by Goodey *et al* (1987, Yeast Biotechnology, D R Berry *et al*, eds, pp 401-429, Allen and Unwin, London) and by King *et al* (1989, Molecular and
25 Cell Biology of Yeasts, E F Walton and G T Yarronton, eds, pp 107-133, Blackie, Glasgow).

For several reasons *Saccharomyces cerevisiae* is well suited for heterologous gene expression. First, it is non-pathogenic to humans and it is incapable of producing certain
30 endotoxins. Second, it has a long history of safe use following centuries of commercial exploitation for various purposes. This has led to wide public acceptability. Third, the extensive commercial use and research devoted to the organism has resulted in a wealth of knowledge about the genetics and physiology as well as large-scale fermentation characteristics of *Saccharomyces cerevisiae*.

35

A review of the principles of heterologous gene expression in *Saccharomyces cerevisiae* and secretion of gene products is given by E Hinchcliffe E Kenny (1993, "Yeast as a

vehicle for the expression of heterologous genes", Yeasts, Vol 5, Anthony H Rose and J Stuart Harrison, eds, 2nd edition, Academic Press Ltd.).

Several types of yeast vectors are available, including integrative vectors, which require
5 recombination with the host genome for their maintenance, and autonomously replicating plasmid vectors.

In order to prepare the transgenic *Saccharomyces*, expression constructs are prepared by inserting the nucleotide sequence of the present invention into a construct designed
10 for expression in yeast. Several types of constructs used for heterologous expression have been developed. The constructs contain a promoter active in yeast fused to the nucleotide sequence of the present invention, usually a promoter of yeast origin, such as the GAL1 promoter, is used. Usually a signal sequence of yeast origin, such as the sequence encoding the SUC2 signal peptide, is used. A terminator active in yeast ends
15 the expression system.

For the transformation of yeast several transformation protocols have been developed. For example, a transgenic *Saccharomyces* according to the present invention can be prepared by following the teachings of Hinnen *et al* (1978, Proceedings of the National
20 Academy of Sciences of the USA 75, 1929); Beggs, J D (1978, Nature, London, 275, 104); and Ito, H *et al* (1983, J Bacteriology 153, 163-168).

The transformed yeast cells are selected using various selective markers. Among the markers used for transformation are a number of auxotrophic markers such as LEU2,
25 HIS4 and TRP1, and dominant antibiotic resistance markers such as aminoglycoside antibiotic markers, eg G418.

Filamentous fungi cells may be transformed by a process involving protoplast formation and transformation of the protoplasts followed by regeneration of the cell wall in a manner
30 known. The use of *Aspergillus* as a host microorganism is described in EP 0 238 023.

Another host organism is a plant. The basic principle in the construction of genetically modified plants is to insert genetic information in the plant genome so as to obtain a stable maintenance of the inserted genetic material. Several techniques exist for
35 inserting the genetic information, the two main principles being direct introduction of the genetic information and introduction of the genetic information by use of a vector system. A review of the general techniques may be found in articles by Potrykus (Annu Rev Plant

Physiol Plant Mol Biol [1991] 42:205-225) and Christou (Agro-Food-Industry Hi-Tech March/April 1994 17-27). Further teachings on plant transformation may be found in EP-A-0449375.

- 5 Host cells transformed with the nucleotide sequence may be cultured under conditions conducive to the production of the encoded enzyme and which facilitate recovery of the enzyme from the cells and/or culture medium.

The medium used to cultivate the cells may be any conventional medium suitable for
10 growing the host cell in question and obtaining expression of the enzyme. Suitable media are available from commercial suppliers or may be prepared according to published recipes (e.g. as described in catalogues of the American Type Culture Collection).

- 15 The protein produced by a recombinant cell may be displayed on the surface of the cell. If desired, and as will be understood by those of skill in the art, expression vectors containing coding sequences can be designed with signal sequences which direct secretion of the coding sequences through a particular prokaryotic or eukaryotic cell membrane. Other recombinant constructions may join the coding sequence to nucleotide
20 sequence encoding a polypeptide domain which will facilitate purification of soluble proteins (Kroll DJ *et al* (1993) DNA Cell Biol 12:441-53).

The enzyme may be secreted from the host cells and may conveniently be recovered from the culture medium by well-known procedures, including separating the cells from
25 the medium by centrifugation or filtration, and precipitating proteinaceous components of the medium by means of a salt such as ammonium sulphate, followed by the use of chromatographic procedures such as ion exchange chromatography, affinity chromatography, or the like.

Secretion

30

Often, it is desirable for the enzyme to be secreted from the expression host into the culture medium from where the enzyme may be more easily recovered. According to the present invention, the secretion leader sequence may be selected on the basis of the desired expression host. Hybrid signal sequences may also be used with the context of
35 the present invention.

Typical examples of heterologous secretion leader sequences are those originating from the fungal amyloglucosidase (AG) gene (*glaA* - both 18 and 24 amino acid versions e.g. from *Aspergillus*), the α -factor gene (yeasts e.g. *Saccharomyces*, *Kluyveromyces* and *Hansenula*) or the α -amylase gene (*Bacillus*).

5 Fusion Proteins

The amino acid sequence of the present invention may be produced as a fusion protein, for example to aid in extraction and purification. Examples of fusion protein partners include glutathione-S-transferase (GST), 6xHis, GAL4 (DNA binding and/or transcriptional
10 activation domains) and (β -galactosidase. It may also be convenient to include a proteolytic cleavage site between the fusion protein partner and the protein sequence of interest to allow removal of fusion protein sequences. Preferably the fusion protein will not hinder the activity of the protein sequence.

15 The fusion protein may comprise an antigen or an antigenic determinant fused to the substance of the present invention. In this embodiment, the fusion protein may be a non-naturally occurring fusion protein comprising a substance which may act as an adjuvant in the sense of providing a generalised stimulation of the immune system. The antigen or antigenic determinant may be attached to either the amino or carboxy terminus of the
20 substance.

In another embodiment of the invention, the amino acid sequence may be ligated to a heterologous sequence to encode a fusion protein. For example, for screening of peptide libraries for agents capable of affecting the substance activity, it may be useful to encode
25 a chimeric substance expressing a heterologous epitope that is recognised by a commercially available antibody.

The invention is further illustrated in the following non-limiting examples and the drawings where:

30

Fig. 1 illustrates the effect on bread crumb structure of a commercial lipase, GRINDAMYL™ EXEL 16 (200 ppm) (bread rolls to the left), Lipase SP 972 (1000, 2500 and 5000 LUT/kg flour, respectively) (rolls 2-4) as compared to a control without addition of lipase (rolls to the right);

35

Fig. 2 shows the effect on bread volume and crumb structure of addition of oat lipid alone (bread to the left), oat lipid + 1010 ppm SP 979 (bread in the middle) and oat lipid + 200 ppm GRINDAMYL™ EXEL 16 (bread to the right),

5 Fig. 3 illustrates the relationship between the ability of Lipase SP 972 and Lipase SP 979 to hydrolyse triglycerides and their ability to hydrolyse glycolipids, and

Fig. 4 illustrates the relationship between the ability of Lipase SP 972 and Lipase SP 979 to hydrolyse triglycerides and the ability to hydrolyse phospholipids.

10

EXAMPLES

Materials and methods

15

1. Enzymes used

Enzyme preparations designated SP 972 and SP 979, which enzymes are modified ilpolytic enzymes capable of hydrolysing a nonpolar lipid, a glycolipid and a phospholipid,
20 were obtained from Novo Nordisk, Bagsværd, Denmark. The enzyme designations are those used by Novo Nordisk.

In addition, a commercially available enzyme preparation was obtained from Fluka Chemie AG, Switzerland (designated catalogue number 62299). This enzyme originates
25 from *Candida antarctica*.

The following lipases were used as references: GRINDAMYL™ EXEL16 (Danisco Ingredients, Brabrand, Denmark) and Stalingsase™ (Gist-brocades, Delfts, the Netherlands).

30 2. Lipase activity using tributyrin as substrate (LUT and LPU)

Lipase activity based on the use of tributyrin as substrate was measured as described in Food Chemical Codex, 4th edition, National Academy Press, 1996, p. 803 with the modification that samples were dissolved in deionised water instead of glycine buffer and that
35 the pH-stat set point was 5.5 instead of 7.

1 LUT is defined as the amount of enzyme which can liberate 2 μmol butyric acid per min. under the assay conditions. 1 LPU is defined as the amount of enzyme that can liberate 1 μmol butyric acid per min. under the assay conditions.

5 3. *Lipase assay based on the use of sunflower oil as substrate (LUSol, pH 6.5)*

Reagents: 8.4 g gum arabic is dissolved in 100 ml demineralised water and 100 ml 30 mM CaCl_2 is added. 36 ml sunflower oil is added slowly under mixing using an Ultra Turrax™ mixer at 20,000 rpm to obtain an emulsion.

10

Assay: 20 ml of sunflower oil emulsion in a beaker is equilibrated at 30°C for 5 min. and pH adjusted to 6.3-6.5 using a pH-stat. 2 ml of enzyme preparation is added and 0.05 N NaOH is added continuously while keeping the pH at 6.5 for 10 min. The slope of the curve for addition of 0.05 N NaOH as a function of time is calculated.

15

1 LUSol is defined as the quantity of enzyme that can liberate 1 μmol fatty acid per min. under assay conditions.

4. *Phospholipase assay (PLU, pH 8.0)*

20

Substrate: 8 g of lecithin powder (Metarin P,074793) is dissolved in 150 ml water under heating to 40-50°C. 40 ml of 50 mM CaCl_2 is added and water is added to 200 ml. The substrate mixture is homogenised for 1 min. using an Ultra Turrax™ mixer at 20,000 rpm.

25 Assay: 20.0 ml of substrate is transferred to a beaker and equilibrated at 30°C for 5 min. and pH adjusted to 8.0 and 2 ml of enzyme preparation is added followed by continuously adding 0.05 N NaOH for 10 minutes while keeping the pH at 8.0.

The slope of the curve for the addition of 0.05 N NaOH as a function of time is calculated.

30 1 PLU is defined as the amount of enzyme which can liberate 1 μmol of fatty acid per min. under assay conditions.

5. *Baking test (Toast bread)*

35 2000 g of Danish reform flour, 30 g of dry yeast, 30 g of sugar, 30 g of salt and water at 400 Brabender units (BU) + 3% was kneaded using a Hobart™ Mixer with hook for 2 min. at low speed and 10 min. at high speed. Dough temperature after mixing was 25°C.

Resting time was 10 min. at 30°C. The dough was scaled at 750 g per dough and rested again for 5 min. at 33°C and 85% RH. Moulding was carried out using a Glimik™ moulder. The doughs were proofed in tins for 50 min. at 33°C and baked in Wachte™ oven for 40 min. at 220°C and steam injection for 16 sec. After cooling, the bread was scaled and the
5 volume of the bread measured using the rape seed displacement method.

The crumb was also evaluated subjectively on a scale 1 to 10, where 1 = coarse structure and 10 = homogeneous structure.

- 10 Three loaves baked in tins provided with lids were stored at 20°C and used for firmness measurements.

6. Firmness measurement

- 15 Firmness of bread was measured using an Instron™ UTM model 4301 connected to a computer. Conditions for measurements were as follows:

Load cell	Max 100 N
Piston diameter	50 mm
20 Cross Head Speed	200 mm/min.
Compression	25%
Bread slice thickness	11 mm

The force is converted to N/dm². The results were calculated as an average of 10 bread
25 slices per loaf.

7. Baking test (Hard crust rolls)

- 1500 g of Danish reform flour, 90 g of compressed yeast, 24 g sugar, 24 g salt and water
30 at 400 Brabender units + 2% were kneaded using a Hobart™ mixer with hook for 2 min. at low speed and 6 min. at high speed. The dough temperature was 26°C. The dough was scaled at 1350 g and was rested for 10 min. at 30°C and moulded using a Fortuna™ moulder. The moulded dough was proofed for 45 min. at 34°C and baked in a Bago™ oven for 18 min. at 220°C and with steam for 12 sec. After cooling, the rolls were scaled
35 and the volume of the rolls was measured using the rape seed displacement method.

The specific volume of the rolls was calculated as follows:

Specific volume = $\frac{\text{Volume of the bread, ml}}{\text{weight of bread, g}}$

5 8. *Mini baking test*

50 g of Danish reform flour, 10 g dry yeast, 0.8 g sugar, 0.8 g salt, 70 ppm ascorbic acid and water at 400 Brabender units was kneaded using a 50 g Brabender™ mixing bowl for 5 min. at 30°C. Resting time was 10 min. at 34°C. The dough was scaled at 15 g per 10 dough and moulded using a device where the dough is rolled between a wooden plate and a plexiglass frame. The doughs were proofed in tins for 45 min. at 34°C and baked in a Voss™ household oven for 8 min. at 225°C. Following baking, the miniloaves were cooled to ambient temperature and after 20 min. the loaves were scaled and the volume determined by the rape seed displacement method. The loaves were cut and the crumb 15 and crust evaluated.

9. *Lipid extraction and fatty acid analysis*

20 g of fully proofed dough was frozen immediately and freeze-dried. The freeze-dried 20 dough was milled using a coffee bean mill and passed through a 800 µm screen. 2 g of freeze-dried dough was scaled using a 15 ml centrifuge tube with screw cap. 10 ml of water-saturated butanol (WSB) was added. The centrifuge tube was placed in a boiling water-bath for 10 min. The tubes were placed in a Rotamix™ apparatus and turned at 45 rpm for 20 min. at ambient temperature and subsequently placed in a boiling water-bath 25 for 10 min and turned on the Rotamix™ apparatus for 30 min. at ambient temperature. The tubes were centrifuged at 3,500 g for 5 min. 5 ml of supernatant was transferred into a vial. WSB was evaporated to dryness under a stream of nitrogen.

The free fatty acids in the extract were analysed as Cu salts in isooctane measured at 30 715 nm and quantified according to a calibration curve based on oleic acid (Kwon, D.Y. and J.S. Rhee (1986), A Simple and Rapid Colourimetric Method for Determination of Free Fatty Acids for Lipase Assay, JAOCS 63:89).

10. *HPLC analysis*

35

Column: LiChrospher™ 100 DIOL 5 µm (Merck art. 16152) 250 x 4.0 ld with water jacket, 50°C.

Mobile phase:

5 A: heptane/isopropanol/butanol/tetrahydrofuran/isooctane/H₂O⁺, 64.5/17.5/7/5/5/1

B: isopropanol/butanol/tetrahydrofuran/isooctane/H₂O⁺, 730/7/5/5/10

⁺ 1 mmol trifluoroacetic acid/l of mobile phase

(pH = 6.6 adjusted with NH₃)

10 Pump: Waters™ 510 + Gradient controller

Gradient:

Flow: ml/min.	Time: min.	% A	% B
1.0	0	100	0
1.0	25	0	100
1.0	30	0	100
1.0	35	100	0
1.0	40	100	0

15 Detector: CUNOW™ DDL21 (evaporative light scattering) (temp: 100°C, voltage: 600, air flow: 6.0 l/min.)

Injector: Hewlett Packard™ 1050, injection volume 50 µl

20 Sample preparation: The wheat lipid was dissolved in 5 ml CHCl₃/CH₃OH (75:25), sonicated for 10 min. and filtered through a filter having a pore size of 0.45 µm.

Calculation: Calibration curve for PC (lecithin standard from International Lecithin and Phospholipid Society)

25

Reference: Arnoldsson, K.C. and P. Kaufmann (1996), Chromatographia 38:317

11. Gas chromatography

30

Perkin Elmer™ 8420 Capillary Gas Chromatograph equipped with a WCOT fused silica column, 12.5 x 0.25 mm ID and 0.1 µm 5% phenylmethyl silicone (CP Sil 8 CB from Chrompack) was used with helium as carrier under the following conditions:

5 Detector: FID, 385°C

Oven programme:

Programme No.	1	2	3	4
Oven temperature, °C	80	200	240	360
Isothermal time, min.	2	0	0	10
Temperature rate, °C/min.	20	10	12	

10 Sample preparation: 50 mg wheat lipid was dissolved in 12 ml heptane:pyridine, 2:1 containing 2 mg/ml heptadecane as an internal standard. 500 µl was transferred to a crimp vial and 100 µl MSTFA (N-Methyl-N-trimethylsilyl-trifluoroacetamide) was added and reacted for 15 min. at 90°C).

15 Calculation: Response factors for mono-, di- and triglycerides and free fatty acids were determined from reference mixtures of these components. Based on these response factors the content of mono-, di- and triglycerides and free fatty acids in wheat lipids were calculated.

20 12. Enzymatic activities of enzymes used in the following examples:

Enzyme	LIPU/g	LUSol/g	PLU/g
Lipase SP 979	0	65	1984
Lipase SP 972	280	40	2450
GRINDAMYL EXEL 16	3000	450	0
Stalingase, # 1867, purified	42.5	24.7	5
Lipase 3 (2524-120)	4600	2910	24

EXAMPLE 1

25 The effect of SP 972 and GRINDAMYL™ EXEL 16 in hard crust rolls

The rolls were baked and tested according to the procedures described above. The results are summarised in the below Table 1.1:

Table 1.1. Specific volume and crumb score (1-10)

5

Enzyme	Specific volume, ml/g	Crumb score
Control w/o enzyme	5.33	4
200 ppm EXEL 16	5.65	7
1000 LUT/kg SP972	5.70	6
2500 LUT/kg SP972	5.99	8
5000 LUT/kg SP972	5.46	8

Fully proofed doughs from this baking test were extracted and the content of free fatty acids was measured. The results are summarised in Table 1.2:

10 Table 1.2. Content of free fatty acid in proofed doughs

Enzyme	% free fatty acids
Control w/o enzyme	0.229
200 ppm EXEL 16	0.303
1000 LUT/kg SP972	0.349
2500 LUT/kg SP972	0.324
5000 LUT/kg SP972	0.364

These results indicate a clear effect of Lipase SP 972 on the fatty acid formation in doughs.

15

Additionally, the bread volume is significantly improved by the addition of Lipase 972 and this enzyme confers a more white and homogeneous crumb structure as it is illustrated in Fig. 1.

20 EXAMPLE 2

The content of fatty acids and polar lipids in proofed doughs supplemented with lipase

Five test doughs (1-5) were mixed using a 50 g Brabender™ Farinograph at 30°C for 5 min. and proofed at 34°C for 60 min. followed immediately by freezing and freeze-drying.

The compositions of the test doughs are summarised in Table 2.1:

5

Table 2.1. Composition of test doughs

Component	Test dough 1 (control)	Test dough 2	Test dough 3	Test dough 4	Test dough 5
Reform flour, g	50	50	50	50	50
Dry yeast, g	0.38	0.38	0.38	0.38	0.38
Salt, g	0.75	0.75	0.75	0.75	0.75
Water at 500 BU (54%), ml	27	26.19	24.95	22.94	18.87
SP972 (560 LUT/ml), ml	0	0.813	2.05	4.06	8.13
LUT/kg flour	0	894	2236	4472	8943

The content of fatty acids were analysed by GC. The results of these analyses are summarised in Table 2.2:

10

Table 2.2. Content of fatty acids in test doughs 1-5

Test dough	% fatty acids
1	0.180
2	0.394
3	0.410
4	0.469
5	0.522

15 Additionally, the content of polar lipids in the control dough (test dough 1) and test dough 5 were analysed by HPLC as described above. The results are summarised in Table 2.3:

Table 2.3. Content of polar lipids in test doughs containing 0 and 8943 LUT lipase. respectively

20

Polar lipid	% polar lipid in control	% polar lipid in test
-------------	--------------------------	-----------------------

	dough 1	dough 5
Acylated phosphatidylethanolamine (APE)	0.044	0.056
Digalactosyldiglyceride (DGDG)	0.209	0.022
Phosphatidylcholine (PC)	0.051	0.003
Digalactosylmonoglyceride (DGMG)	0.015	0.103
Lysophosphatidylcholine (LPC)	0.268	0.301

The above results indicate a clear effect of Lipase SP 972 on the formation of fatty acids. Even at the lowest dosage of 894 LUT/kg flour, a significant increase in fatty acid content in the test dough was observed. The HPLC analyses indicate a remarkable effect in re-
5 spect of hydrolysis of phospholipids and glycolipids.

Accordingly, these experiments demonstrates that the SP 972 Lipase is capable of utilis-
ing glycerides, phospholipids and glycolipids as substrate.

10 EXAMPLE 3

The effect of Lipase SP 972 alone and in combination with soy lecithin on the con-
tent of fatty acids and polar lipids in hard crust roll dough and the quality of the
baked rolls

15

Lipase SP 972 was tested for its activity alone and in combination with soy lecithin on the
quality of hard crust rolls. A commercial lipase product, GRINDAMYL™ EXEL 16 (EXEL
16) and a commercial DATEM emulsifier, Panodan™ A 2020 were tested for comparison.

20 The used amounts of enzyme and emulsifier additives and the quality characteristics of
the respective baked rolls are summarised in Table 3.1:

Table 3.1. Enzyme and emulsifier additions and bread quality

	Specific volume, ml/g	Crumb score (1-10)	Crust score (1-10)
Control	5.95	3	3
0.2% Panodan A 2020	6.14	N.D ¹	N.D ¹
750 LUT/kg SP 972	6.77	8	7
1500 LUT/kg SP 972	6.65	7	6

750 LUT/kg SP 972 + 0.5% lecithin	6.94	5	8
1500 LUT/kg SP 972 + 0.5% lecithin	7.2	5	7
900 LUT/kg EXEL 16	6.38	7	5
1800 LUT/kg EXEL 16	6.2	6	6
900 LUT/kg EXEL 16 + 0.5% lecithin	6.3	5	7
1800 LUT/kg EXEL 16 + 0.5% lecithin	6.35	7	7

¹Not determined

Baking experiments using Lipase SP 972 as compared to GRINDAMYL™ EXEL 16 or 5 Panodan A 2020 emulsifier showed excellent baking performance of SP 972 both alone and in combination with soy lecithin. This effect is significantly better than that of the commercial lipase, GRINDAMYL™ EXEL 16.

Lipids extracted from the dough were analysed for free fatty acids and polar lipids as de- 10 scribed above. The results of these analyses are summarised in Tables 3.2 and 3.3:

Table 3.2. Content of free fatty acids in doughs containing an emulsifier, Lipase SP 972 alone or in combination with lecithin, or GRINDAMYL™ EXEL 26 alone or in combination with lecithin

15

	Free fatty acids, wt%
0.2% Panodan A 2020	0.129
750 LUT/kg SP 972	0.148
1500 LUT/kg SP 972	0.235
750 LUT/kg SP 972 + 0.5% lecithin	0.269
1500 LUT/kg SP 972 + 0.5% lecithin	0.280
900 LUT/kg EXEL 16	0.263
1800 LUT/kg EXEL 16	0.330
900 LUT/kg EXEL 16 + 0.5% lecithin	0.337
1800 LUT/kg EXEL 16 + 0.5% lecithin	0.346

Table 3.3. The content of polar lipids (wt%) in doughs supplemented with Lipase 972 alone or in combination with lecithin or GRINDAMYL™ EXEL 16 alone or in combination with lecithin

20

	DGDG	DGMG	PC	LPC
750 LUT/kg SP 972	0.089	0.083	0.023	0.303
750 LUT/kg SP 972 + 0.5% lecithin	0.116	0.076	0.031	0.326
900 LUT/kg EXEL 16	0.233	0.018	0.067	0.285
900 LUT/kg EXEL 16 + 0.5% lecithin	0.240	0.015	0.015	0.290

The above results indicate that GRINDAMYL™ EXEL 16 has no effect on hydrolysis of DGDG and PC. It can therefore be concluded that modification of both phospholipids and glycolipids in the dough effected by Lipase SP 972 is of importance for the bread improving effect of Lipase 972 as compared to the commercial lipase, GRINDAMYL™ EXEL 16.

EXAMPLE 4

The enzymatic activity of Lipase SP 972 in a dough supplemented with oat lipid

Lipase SP 972 was tested in a model dough supplemented with an oat lipid fraction, 2133-18-1. The recipe of the dough was as follows:

Table 4.1. Composition of doughs supplemented with oat lipid

Dough component	Dough No. 1	Dough No. 2	Dough No. 3	Dough No. 4
Reform wheat flour, g	10	10	10	10
30% NaCl, g	0.5	0.5	0.5	0.5
Oat lipid, 2133-18-1, g	0.25	0.25	0.25	0.25
Water (500 BU) (53.7%), ml	4.87	4.87	4.87	4.87
SP 972, LUT/kg flour	0	500	1000	5000

The dough was mixed at 30°C using a 50 g Brabender Farinograph. After 60 min. fermentation, the dough was frozen and freeze-dried followed by extracting lipids from the freeze-dried dough and analysing for polar lipids using HPLC. The results are summarised in Table 4.2:

Table 4.2. Content of polar lipids in doughs supplemented with oat lipids. Values are wt% of freeze-dried dough

Polar lipid component	Dough No. 1 (control)	Dough No. 2	Dough No. 3	Dough No. 4
DGDG	0.751	0.633	0.504	0.221
PC	0.301	0.209	0.159	0.055
DGMG	0.032	0.094	0.112	0.233
LPC	0.276	0.342	0.342	0.409

It appears from the above results that addition of oat lipid results in an enhanced level of both phospholipids and glycolipids and that the SP 972 lipase to a large extent utilises DGDG and PC as substrates. Accordingly, the addition of the enzyme has a significant effect in the doughs in respect of formation of more polar lipid components.

EXAMPLE 5

Baking experiments to evaluate the possible synergistic effect of adding a cereal lipid and Lipase SP 979 to doughs

Baking experiments were carried out in which the effect of a fractionated oat lipid preparation (2133-100-1) alone and in combination with Lipase SP 979 or GRINDAMYL™ EXEL 16 on bread quality was studied to assess whether a synergistic effect of oat lipid and lipases could be demonstrated. The procedure for making the dough and baking the dough was as described above for "mini baking test". The amount of additives used and the results in respect of bread quality are summarised in Table 5.1:

Table 5.1. The effect on bread quality of oat lipid and lipases

Additives	Specific volume, ml/g	Relative volume
Control w/o additives	4.01	100
Oat lipid, 0.3%	3.91	98
Oat lipid, 0.3% + 1010 ppm SP 979	5.75	143
Oat lipid, 0.3% + 200 ppm EXEL 16	4.70	117

These baking experiments indicate a very strong volume effect by the combination of oat lipid and Lipase SP 979. The oat lipid fraction alone did not have any improving effect on bread volume. It was also very clear that the commercial lipase GRINDAMYL™ EXEL 16 although it showed a slight volume improvement effect had significantly less bread volume improvement effect than the SP 979 lipase which relative to the control without

additives gave a specific volume improvement of 43% and relative to the commercial lipase an improvement of about 22%.

In addition to the improved bread volume, the addition of Lipase SP 979 resulted in improved bread crumb structure and bread appearance. This is illustrated in Fig. 2 from which it appears that bread baked with SP 979 gave a nice and tender crumb structure and a significant oven spring.

EXAMPLE 6

10 The effect of Lipase SP 972 alone and in combination with acylglycerols on dough quality and the quality of toast bread

Lipase SP 972 was tested alone and in combination with soy oil in baking experiments with toast bread carried out as described above, and the effects on dough characteristics and bread quality was compared with those of GRINDAMYL™ EXEL 16 and DIMODAN™ SDM-T. The results on dough quality parameters and the bread quality of these experiments are summarised in the below tables:

20 Table 6.1. The effect on dough extensibility and stickiness of Lipase SP 972, soy oil, shortening, GRINDAMYL™ EXEL 16 and the emulsifier, DIMODAN™ SDM-T alone and in combinations

Additive	Dough score (0-10) after mixing		Dough score (0-10) after moulding	
	Extensibility	Stickiness	Extensibility	Stickiness
Control	5	5	5	5
2% shortening	5	5	6	5
2% shortening + 500 LUT/kg SP 972	6	5	7	5
500 LUT/kg SP 972	6	5	6	5
1% soy oil	6	5	6	5
1% soy oil + 500 LUT/kg SP 972	6	5	7	5
1000 LUT/kg SP 972	6	5	7	4
1% soy oil + 1000 LUT/kg SP 972	6	5	7	4
0.4% DIMODAN™ SDM-T	6	5	6	5
200 ppm EXEL 16	6	5	7	5
2% shortening + 200 ppm EXEL 16	6	5	7	4

1% soy oil + 200 ppm EXEL 16	6	5	7	4
------------------------------	---	---	---	---

Table 6.2. The effect on specific volume, crumb quality and softness of Lipase SP 972, soy oil, shortening, GRINDAMYL™ EXEL 16 and the emulsifier, DIMODAN™ SDM-T alone and in combinations

Additive	Specific volume	Crumb score (0-10)	Softness, day 3	Softness, day 7
Control	3.72	4	82	129
2% shortening	3.98	7	57	91
2% shortening + 500 LUT/kg SP 972	4.63	3	48	69
500 LUT/kg SP 972	4.26	7	45	75
1% soy oil	4.05	1	63	96
1% soy oil + 500 LUT/kg SP 972	4.65	5	48	77
1000 LUT/kg SP 972	4.01	7	44	70
1% soy oil + 1000 LUT/kg SP 972	3.29	10	100	135
0.4% DIMODAN™ SDM-T	4.17	7	58	89
200 ppm EXEL 16	3.25	7	108	146
2% shortening + 200 ppm EXEL 16	3.87	6	55	86
1% soy oil + 200 ppm EXEL 16	4.12	4	73	104

These baking experiments confirmed that the addition of Lipase SP 972 alone and in combination with acylglycerol lipids resulted in a significant improvement of bread volume and softness and this effect was clearly better than that of the commercial lipase, GRINDAMYL™ EXEL 16. Additionally, as it appears from the above tables, the addition of Lipase SP 972 gave improved dough extensibility and crumb score. It is also evident from the above results that SP 972 gave very positive effects in combination with both soy oil and shortening.

In contrast to the effect of Lipase SP 972, the addition of GRINDAMYL™ EXEL 16 did not result in improvement of bread softness.

20 EXAMPLE 7

The effect on dough characteristics and bread quality of Lipase SP 979

Lipase SP 979 which has relatively low activity on short chain triglycerides but is particularly active towards glycerides with long chain fatty acids (see section 12 above), and towards phospholipids was tested in toast bread baking experiments. The procedure for making the toast bread was as described above, but with the addition of additives as indicated in the following Table 7.1 which summarises the results of the experiments in respect of dough and bread quality.

Table 7.1. The effect of Lipase SP 972 alone and in combination with lecithin or soy oil on dough and bread quality

	Dough score after moulding		Specific volume	Crumb score	Softness day 1	Softness day 3	Softness day 7
	Extensibility	Stickiness					
Control	5	5	4.4	3	37	69	103
500 PLU/kg SP 979	6	5	4.27	8	32	59	90
1000 PLU/kg SP 979	6	5	5.19	8	20	42	61
2000 PLU/kg SP 979	6	5	4.84	7	21	39	67
0.5% lecithin	6	5	4.82	6	25	52	76
500 PLU/kg SP 979 + 0.5% lecithin	8	5	4.43	8	31	58	87
1000 PLU/kg SP 979 + 0.5% lecithin	6	5	5.21	8	19	38	60
2000 PLU/kg SP 979 + 0.5% lecithin	6	5	4.88	8	20	38	59
500 PLU/kg SP 979 + 1% soy oil	6	5	4.8	8	24	38	69
1000 PLU/kg SP 979 + 1% soy oil	6	5	4.91	9	24	41	67
2000 PLU/kg SP 979 + 1% soy oil	6	5	4.33	6	34	55	86
0.4% DIMODAN SDM-T	6	5	4.44	8	31	55	86

These baking experiments show a very interesting effect of Lipase SP 979 in terms of improved bread volume and crumb structure. This effect is significantly better than that of the commercial emulsifier, DIMODAN™ SDM-T.

Even more interesting, however, is the effect of this enzyme on bread softness which clearly indicates that Lipase SP 979 both alone and in combination with acylglycerols and phospholipids has a significant softness improving effect. It was observed that the crumb of the bread made in this experiment with addition of SP 979 was moist and that the crumb structure of such bread was very homogeneous and had a bite which was shorter than that of the control bread without additives.

EXAMPLE 8

25

The effect of Lipase SP 979 alone and in combination with oat lipid on bread quality

Mini bread baking experiments were carried out according to the procedures described above, but with the additions of additives as indicated in the below Table 8.1 in which the effects on specific volume and formation of free fatty acids (analysed colourimetrically) in the doughs are summarised:

Table 8.1. The effect of Lipase 979 on bread volume and formation of free fatty acids

	Specific volume	wt% free fatty acids
Control	3.53	0.241
0.3% oat lipid 2133-100-1	3.72	0.243
0.3% oat lipid + 1010 ppm SP 979	5.45	0.416
0.3% oat lipid + 200 ppm EXEL 16	4.5	0.377
1010 ppm SP 979	4.84	0.338
200 ppm EXEL 16	4.08	0.317

10 The above results demonstrate a significant dough strengthening effect of Lipase SP 979 as reflected in enhanced specific volume and crumb structure and appearance. The effect of SP 979 was even more pronounced when it is combined with oat oil.

Proofed doughs from this baking test were freeze-dried and lipids extracted and 15 subjected to HPLC analysis. The results of this analysis are shown in Table 8.2:

Table 8.2. The effect of Lipase SP 979 on the hydrolysis of glycolipids and phospholipids in dough (values are in wt%)

	DGDG	MGDG	PC	LPC
Control	0.176	0.033	0.025	0.193
0.3% oat lipid 2133-100-1	0.190	0.031	0.036	0.224
0.3% oat lipid + 1010 ppm SP 979	0.089	0.020	0.006	0.228
0.3% oat lipid + 200 ppm EXEL 16	0.188	0.031	0.038	0.197
1010 ppm SP 979	0.061	0.018	0.007	0.114
200 ppm EXEL 16	0.203	0.039	0.032	0.229

20

It appears from these results that Lipase SP 979 is capable of hydrolysing both glycolipids (DGDG) and phospholipids (PC). In fact more than 50% of DGDG and PC present is hydrolysed by the addition of SP 979.

EXAMPLE 9

Dough and bread quality improving effects of Lipase SP 972 and Lipase SP 979 in
5 comparison with the commercial lipases, GRINDAMYL™ EXEL 16 and Stalingase™

The lipid hydrolysing effects of Lipase SP 972 and Lipase SP 979 were compared with those of two commercial lipases, GRINDAMYL™ EXEL 16 and Stalingase™ (Gist-brocades) (the latter enzyme is also referred to as # 1867) in a model dough system.
10 Doughs were kept for 1 hour at 32°C and freeze-dried and polar lipids analysed by HPLC and nonpolar lipids by GLC analyses.

The model doughs had the following compositions:

15 Table 9.1. Composition of model doughs

	Dough No.1	Dough No.2	Dough No.3	Dough No.4	Dough No.5
Flour, Reform, g	50	50	50	50	50
30% NaCl, g	2.5	2.5	2.5	2.5	2.5
Water, 500 BU, 53.7%, ml	24.35	24.35	24.35	24.35	24.35
SP 972, LUT/kg flour		2000			
SP 979, PLU/kg flour			1000		
EXEL 16, ppm				200	
Stalingase™, ppm					200

The content of free fatty acids and triglycerides (GLC analysis) and the polar lipids, DGDG and PC (HPLC analysis) in the doughs are summarised in Table 9.2:

20

Table 9.2. Content of free fatty acids, triglycerides and polar lipids in model doughs
(values are in wt%)

	Free fatty acids	Triglycerides	DGDG	PC
Control	0.188	0.378	0.204	0.023
2000 LUT SP 972	0.419	0.251	0.026	0.002
1000 PLU SP 979	0.285	0.359	0.153	0.009

200 ppm EXEL 16	0.257	0.321	0.224	0.022
200 ppm Stalingase™	0.285	0.276	0.217	0.024

Based on these values it is possible to calculate the amount of free fatty acid (FFA) formed in the dough and the amounts of triglycerides, DGDG and PC, respectively that are hydrolysed in the doughs. These data are shown in Table 9.3:

5

Table 9.3. Formation of free fatty acids and hydrolysis of triglycerides, DGDG and PC in model doughs (wt%)

	FFA formed	DGDG hydro- lysed	PC hydrolysed	Triglycerides hydrolysed
Control	0	0	0	0
2000 LUT SP 972	0.230	0.178	0.021	0.127
1000 PLU SP 979	0.097	0.051	0.014	0.019
200 ppm EXEL 16	0.069	-0.020	0.001	0.057
200 ppm Stalingase™	0.097	-0.013	-0.001	0.102

10 When the activity of a lipase in a dough is expressed in terms of the amount of FFA formed in the dough as shown in the above table, it is clearly demonstrated that Lipase SP 972 and Lipase SP 979 are very active in respect of hydrolysis of both glycolipids (DGDG) and phospholipids (PC) as compared to both of the commercial lipases tested, which show no effect at all on these substrates.

15

With respect to effect on triglycerides, Lipase SP 972 and Lipase SP 979 are both active, however to a less extent than the tested commercial lipases.

Accordingly, these results confirm that the two lipases according to the invention hydro-
20 lyse a wide range of lipid substrates including nonpolar lipids such as triglycerides and polar lipids such as the glycolipid, DGDG, and the phospholipid, PC.

The data summarised in Table 9.3 may also be illustrated graphically to show the rela-
25 tionship between the ability of enzymes to hydrolyse triglycerides and the ability to hydrolyse glycolipids (Fig. 3) and the relationship between the ability of enzymes to hydrolyse triglycerides and the ability to hydrolyse phospholipids (Fig. 4). It appears from these figures that this relationship for Lipase SP 972 and Lipase SP 979, respectively in respect

of DGDG can be described as a curve having slopes of 1.3965 and 2.6405, respectively and the corresponding values in respect of PC are 0.1648 and 0.7248, respectively.

These data clearly illustrate the relatively high activity of Lipase SP 972 and Lipase SP 5 979 on glycolipids and phospholipids in relation to their effect on triglycerides.

EXAMPLE 10

10 Effect of Lipase SP979 and SP972 on different fatty acids

The activity of SP979 and SP972 lipases on different fatty acids was evaluated by making a test dough containing butter fat. A commercial lipase product GRINDAMYL™ EXEL 16 was tested for comparison.

15

Test doughs were made according to the recipes outlined in Table 10.1:

Table 10.1 – Composition of test doughs with butter fat

	1	2	3	4
Flour, Reform 2000063, g	10	10	10	10
Dry yeast, g	0.1	0.1	0.1	0.1
Salt, g	0.15	0.15	0.15	0.15
Sugar, g	0.15	0.15	0.15	0.15
Butter, Lurpak, g	0.1	0.1	0.1	0.1
Water 500 BU +7%, ml	6	6	6	6
Ascorbic acid, 0.1% solution, ml	0.4	0.4	0.4	0.4
GRINDAMYLEXEL 16, ppm		400		
SP972, LIPU/kg flour			200	
SP979, PLU/kg flour				1000

20

The four test doughs (1-4) were mixed using a 50g Brabender™ mixing bowl and proofed (as detailed in the section entitled "8. Mini baking test" above). After proofing the doughs were frozen and freeze dried. The total lipids in the doughs were extracted with water saturated butanol. Free fatty acids in the dough lipids were isolated on a Bond Elut-NH₂ 5 column and the free fatty acid composition was analysed by GLC as fatty acid methyl esters (see Table 10.2). The total amount of free fatty acids in the dough lipids (% calculated on dough dry weight) was analysed by spectrophotometric method as Cu-salts (see also Table 10.2)

10 Table 10.2 Free fatty acid in the dough, and the fatty acid composition of the free fatty acid.

	1	2	3	4
	Control	Gr. Exel 16	SP972	SP979
Free fatty acid in the dough	0.0925%	0.252%	0.290%	0.192%
Fatty acid				
Composition, %				
C6		0.1	0.1	0.1
C8		0.2	0.1	0.1
C10	0.3	0.7	0.4	0.3
C12	1.5	1.5	0.9	0.9
C14	0.9	3.1	2.3	1
C15	0.4	0.7	0.6	0.3
C16	38.1	35.8	36.4	36.4
C16:1	1.4	0.9	0.7	0.6
C17	0.4	0.7	0.6	0.4
C18	9.3	8.6	7.8	6.2
C18:1	20.1	18.9	15.5	12.9
C18:2	24.6	26	32.3	38.2
C18:3	1.4	1.6	1.4	1.5
C20	0.5	0.3	0.3	0.3
C20:1	1.4	0.9	0.7	0.8

Based on the amount of free fatty acid and the fatty acid composition, it is possible to calculate the amount of free fatty acid produced in dough containing lipase relative to the control dough without lipase addition (see Table 10.3).

- 5 For example, the amount of C16 (palmitic) fatty acid produced in dough number 2 containing lipase GRINDAMYL EXEL 16 compared to dough number 1 without lipase addition is calculated as follows:

$$\frac{0.252 \times 35.8}{100} - \frac{0.0925 \times 38.1}{100} = 0.05497\%$$

10 $0.05497\% = 549.7 \text{ ppm}$

$$\frac{549.7 \text{ ppm}}{\text{mwt of fatty acid (i.e. 256.4)}} = 2.144 \text{ mmol per kg dry dough}$$

15

Based on this information it is possible to calculate the amount of short chain fatty acids (carbon number ≤ 10) relative to the amount of long chain fatty acids (carbon number ≥ 12) produced in the dough (see Table 10.3).

20 Table 10.3 mmol of Fatty acid/kg dry dough and relative activity on short chain fatty acids

	Millimol Fatty acid/kg dry dough		
	2 Gr. Exel 16	3 SP972	4 SP979
C6	0.022	0.025	0.017
C8	0.035	0.020	0.013
C10	0.086	0.051	0.017
C12	0.119	0.061	0.017
C14	0.306	0.256	0.048
C15	0.058	0.057	0.008
C16	2.144	2.742	1.351
C16:1	0.038	0.029	0.000
C17	0.052	0.051	0.015

C18	0.459	0.493	0.116
C18:1	1.028	0.933	0.219
C18:2	1.525	2.529	1.804
C18:3	0.098	0.099	0.057
C20	0.009	0.013	0.004
C20:1	0.031	0.024	0.008
Molar ratio of short/long chain fatty acid	2.44	1.32	1.29

From the results presented in Table 10.3 it is clear that different lipases had a different activity towards different fatty acids in the same substrate, and it is shown that the lipases
5 SP 972 and SP 979 have low activity towards the short chain fatty acids as compared with Grindamyl EXEL 16.

EXAMPLE 11

10

The activity of a commercially available Lipase towards polar lipids.

The activity of a commercially available lipase available from Fluka Chemie AG, Switzerland designated as catalogue number 62299 was evaluated. This lipase was
15 tested in a model dough system and was compared with a control dough having no lipase added.

Test doughs based on 10g flour were made according to the recipes outlined in Table 11.1:

20

Table 11.1 Composition of test doughs

	1	2
Flour, DK Reform, g	10	10
Dry yeast, g	0.1	0.1

Salt	0.15	0.15
Water (500 BU=60%), ml	6	6
Fluka lipase 62299, mg		3.3

The doughs (1-2) were kneaded using a 50g Brabender™ mixing bowl for 5 minutes at 30°C and proofed for 45 minutes at 34°C. After proofing the doughs were frozen and freeze dried. The freeze dried doughs were extracted with water saturated butanol. The 5 isolated dough lipids were then analysed for free fatty acids by a colourimetric method as Cu-salts and the dough lipids were also analysed by HPLC (see table 11.2).

Table 11.2 HPLC analysis of dough lipids

HPLC analysis	Control, ‰	Fluka Lipase 62299 ‰
MGDG	0.36	0.37
MGMG	0	0.07
PA	0.05	0
APE	0.2	0.15
DGDG	1.91	1.66
PC	0.42	0.19
LPE	0.2	0.19
DGMG	0	0.16
LPC	2.63	2.44
Fatty Acid Analysis	1.01	2.1

10

The results given in Table 11.2 show that Fluka lipase no. 62299 is active in a dough system during the formation of free fatty acids and that Fluka lipase no. 62299 is active towards both glycolipids (DGDG) and phospholipids (PC).

15 SUMMARY

The present invention will now be summarised by way of numbered paragraphs:

1. A method of preparing a flour dough, the method comprising adding to the dough components an enzyme that, under dough conditions, is capable of hydrolysing a nonpolar lipid, a glycolipid and a phospholipid, or a composition containing said enzyme, and mixing the dough components to obtain the dough.
- 20

2. A method according to paragraph 1 wherein at least one of the nonpolar lipid, the glycolipid and the phospholipid is a naturally occurring lipid component occurring in the flour used for the dough.
- 5 3. A method according to paragraph 2 wherein the naturally occurring lipid is a phospholipid.
4. A method according to paragraph 3 wherein the phospholipid is phosphatidylcholine (PC)
- 10 5. A method according to paragraph 2 wherein the naturally occurring lipid is a glycolipid.
6. A method according to paragraph 5 wherein the glycolipid is digalactosyldiglyceride (DGDG).
- 15 7. A method according to paragraph 1 wherein at least one of the nonpolar lipid, the glycolipid and the phospholipid is added to the dough.
8. A method according to paragraph 7 wherein the nonpolar lipid being added is an acylglycerol.
- 20 9. A method according to paragraph 8 wherein the acylglycerol being added is selected from the group consisting of a vegetable oil, a vegetable fat, an animal oil, an animal fat, shortening and butter.
- 25 10. A method according to paragraph 9 wherein the vegetable oil is a naturally occurring cereal oil including oat oil.
11. A method according to paragraph 7 wherein the polar lipid being added is a phospholipid selected from the group consisting of phosphatidylinositol (PI), phosphatidylglycerol (PG), phosphatidylcholine (PC) and phosphatidylethanolamine (PE).
- 30 12. A method according to paragraph 1 wherein the dough is a yeast leavened dough.

35

13. A method according to paragraph 1 wherein the enzyme is added in amount which is in the range of 10 to 100,000 LUT/kg flour or in the range of 10 to 100,000 PLU/kg flour.
- 5 14. A method according to paragraph 13 wherein the amount of enzyme is in the range of 100 to 10,000 LUT/kg flour or 100 to 10,000 PLU/kg flour.
15. A method according to paragraph 1 wherein the dough is a bread dough, the method comprising as a further step that the dough is baked to obtain a baked product.
- 10 16. A method according to paragraph 1 wherein the dough is a dough selected from the group consisting of a pasta dough, a noodle dough and a cake dough or batter.
- 15 17. A method according to paragraph 1 wherein the enzyme is added in an amount that results in an increase of the specific volume of the baked product that is at least 10% relative to a baked product made under identical conditions except that the enzyme is not added.
18. A method according to paragraph 1 wherein a further enzyme is added to the dough.
- 20 19. A method according to paragraph 18 wherein the further enzyme is selected from the group consisting of a lipase, a starch degrading enzyme, a hemicellulase, a cellulase and an oxidoreductase.
- 25 20. A method according to paragraph 1 wherein at least 25% of DGDG initially present in the dough is hydrolysed.
21. A method according to paragraph 1 or 20 wherein at least 25% of PC initially present in the dough is hydrolysed.
- 30 22. A method according to paragraph 1 wherein the enzyme is characterised in that the relationship between the ability of the enzyme to hydrolyse triglycerides and the ability to hydrolyse glycolipids can be described as a curve having a slope which is at least 1.0.
- 35 23. A method according to paragraph 1 wherein the enzyme is characterised in that the relationship between the ability of the enzyme to hydrolyse triglycerides and the ability

to hydrolyse phospholipids can be described as a curve having a slope which is at least 0.1.

24. A method according to any one of the preceding paragraphs wherein the nonpolar
5 lipid is a triglyceride comprising a C_4 to C_{10} fatty acid and a triglyceride comprising a
 C_{12} to C_{20} fatty acid, and wherein the enzyme preferentially hydrolyses said
triglyceride comprising a C_{12} to C_{20} fatty acid as compared with a triglyceride
comprising a C_4 to C_{10} fatty acid.
- 10 25. A method of preparing a dough, said method comprising adding to the dough
components an enzyme that, under dough conditions, is capable of hydrolysing a
triglyceride comprising a C_4 to C_{10} fatty acid, a triglyceride comprising a C_{12} to C_{20}
fatty acid, a glycolipid and a phospholipid, and which enzyme preferentially hydrolyses
said triglyceride comprising a C_{12} to C_{20} fatty acid as compared with a triglyceride
15 comprising a C_4 to C_{10} fatty acid, and mixing the dough components to obtain the
dough.
26. A method according to paragraph 25 wherein said glycolipid is digalactosyl
diglyceride.
- 20 27. A method of preparing a dough or a baked product prepared from a dough,
comprising:
- a) testing at least one enzyme for its hydrolytic activity towards a C_4 to C_{10} fatty acid in a
triglyceride, a C_{12} to C_{20} fatty acid fatty acid in a triglyceride, digalactosyl diglyceride
25 and a phospholipid,
 - b) selecting an enzyme having hydrolytic activity towards digalactosyl diglyceride and
the phospholipid, and having a greater activity towards the a C_{12} to C_{20} fatty acid as
compared with a C_4 to C_{10} fatty acid, and
 - c) adding the selected enzyme to the dough.
- 30 28. A dough improving composition comprising an enzyme that, under dough conditions,
is capable of hydrolysing a nonpolar lipid, a glycolipid and a phospholipid, and
optionally at least one further dough component.
- 35 29. A composition according to paragraph 28 that comprises a further enzyme selected
from the group consisting of a lipase, a starch degrading enzyme, a hemicellulase, a
cellulase and an oxidoreductase.

30. A composition according to paragraph 28 where the further dough component is selected from the group consisting of a cereal flour, yeast, a chemical leavening agent, a dough strengthening agent, an emulsifier, a sugar, an acylglycerol, a phospholipid, a glycolipid and a salt.
31. A method according to paragraph 1 wherein the enzyme is added in a composition according to any of paragraphs 28-30.
32. A dough obtained by the method of any of paragraphs 1-27 and 31.
33. A dough according to paragraph 32 which is frozen or packaged in a controlled atmosphere.
34. A baked product that is obtained by baking the dough of paragraph 32.
35. A noodle product made from the dough of paragraph 32.
36. A pasta product made from the dough of paragraph 32.

20

All publications mentioned in the above specification are herein incorporated by reference. Various modifications and variations of the described methods and systems of the invention will be apparent to those skilled in the art without departing from the scope and spirit of the invention. Although the invention has been described in connection with specific preferred embodiments, it should be understood that the invention as claimed should not be unduly limited to such specific embodiments. Indeed, various modifications of the described modes of carrying out the invention which are obvious to those skilled in molecular biology or related fields are intended to be within the scope of the following claims.

CLAIMS

1. A method of preparing a flour dough, said method comprising adding to the dough
5 components an enzyme that, under dough conditions, is capable of hydrolysing a nonpolar lipid, a glycolipid and a phospholipid, or a composition containing said enzyme, and mixing the dough components to obtain the dough.
2. A method according to claim 1 wherein at least one of the nonpolar lipid, the glycolipid
10 and the phospholipid is a naturally occurring lipid component occurring in the flour used for the dough.
3. A method according to claim 2 wherein the naturally occurring lipid is a phospholipid.
- 15 4. A method according to claim 3 wherein the phospholipid is phosphatidylcholine (PC)
5. A method according to claim 2 wherein the naturally occurring lipid is a glycolipid.
6. A method according to claim 5 wherein the glycolipid is digalactosyldiglyceride
20 (DGDG).
7. A method according to claim 1 wherein at least one of the nonpolar lipid, the glycolipid
and the phospholipid is added to the dough.
- 25 8. A method according to claim 7 wherein the nonpolar lipid being added is an acylglycerol.
9. A method according to claim 8 wherein the acylglycerol being added is selected from
30 the group consisting of a vegetable oil, a vegetable fat, an animal oil, an animal fat, shortening and butter.
10. A method according to claim 9 wherein the vegetable oil is a naturally occurring
cereal oil including oat oil.
- 35 11. A method according to claim 7 wherein the polar lipid being added is a phospholipid
selected from the group consisting of phosphatidylinositol (PI).

phosphatidylglycerol (PG), phosphatidylcholine (PC) and
phosphatidylethanolamine (PE).

12. A method according to claim 1 wherein the dough is a yeast leavened dough.
- 5
13. A method according to claim 1 wherein the enzyme is added in amount which is in the range of 10 to 100,000 LUT/kg flour or in the range of 10 to 100,000 PLU/kg flour.
14. A method according to claim 13 wherein the amount of enzyme is in the range of 100
10 to 10,000 LUT/kg flour or 100 to 10,000 PLU/kg flour.
15. A method according to claim 1 wherein the dough is a bread dough, the method comprising as a further step that the dough is baked to obtain a baked product.
- 15 16. A method according to claim 1 wherein the dough is a dough selected from the group consisting of a pasta dough, a noodle dough and a cake dough or batter.
17. A method according to claim 1 wherein the enzyme is added in an amount that results in an increase of the specific volume of the baked product that is at least 10%,
20 relative to a baked product made under identical conditions except that the enzyme is not added.
18. A method according to claim 1 wherein a further enzyme is added to the dough.
- 25 19. A method according to claim 18 wherein the further enzyme is selected from the group consisting of a lipase, a starch degrading enzyme, a hemicellulase, a cellulase and an oxidoreductase.
20. A method according to claim 1 wherein at least 25% of DGDG initially present in the
30 dough is hydrolysed.
21. A method according to claim 1 or 20 wherein at least 25% of PC initially present in the dough is hydrolysed.
- 35 22. A method according to claim 1 wherein the enzyme is characterised in that the relationship between the ability of the enzyme to hydrolyse triglycerides and the

ability to hydrolyse glycolipids can be described as a curve having a slope which is at least 1.0.

23. A method according to claim 1 wherein the enzyme is characterised in that the relationship between the ability of the enzyme to hydrolyse triglycerides and the ability to hydrolyse phospholipids can be described as a curve having a slope which is at least 0.1.
24. A method according to any one of the preceding claims wherein said nonpolar lipid is a triglyceride comprising a C₄ to C₁₀ fatty acid and a triglyceride comprising a C₁₂ to C₂₀ fatty acid, and wherein said enzyme preferentially hydrolyses said triglyceride comprising a C₁₂ to C₂₀ fatty acid as compared with a triglyceride comprising a C₄ to C₁₀ fatty acid.
25. A method of preparing a dough, said method comprising adding to the dough components an enzyme that, under dough conditions, is capable of hydrolysing a triglyceride comprising a C₄ to C₁₀ fatty acid, a triglyceride comprising a C₁₂ to C₂₀ fatty acid, a glycolipid and a phospholipid, and which enzyme preferentially hydrolyses said triglyceride comprising a C₁₂ to C₂₀ fatty acid as compared with a triglyceride comprising a C₄ to C₁₀ fatty acid, and mixing the dough components to obtain the dough.
26. A method according to claim 25 wherein said glycolipid is digalactosyl diglyceride.
27. A method of preparing a dough or a baked product prepared from a dough, comprising:
- d) testing at least one enzyme for its hydrolytic activity towards a C₄ to C₁₀ fatty acid in a triglyceride, a C₁₂ to C₂₀ fatty acid in a triglyceride, digalactosyl diglyceride and a phospholipid,
 - e) selecting an enzyme having hydrolytic activity towards digalactosyl diglyceride and the phospholipid, and having a greater activity towards the a C₁₂ to C₂₀ fatty acid as compared with a C₄ to C₁₀ fatty acid, and
 - f) adding the selected enzyme to the dough.
28. A dough improving composition comprising an enzyme that, under dough conditions, is capable of hydrolysing a nonpolar lipid, a glycolipid and a phospholipid, and optionally at least one further dough component.

29. A composition according to claim 28 that comprises a further enzyme selected from the group consisting of a lipase, a starch degrading enzyme, a hemicellulase, a cellulase and an oxidoreductase.

5

30. A composition according to claim 28 where the further dough component is selected from the group consisting of a cereal flour, yeast, a chemical leavening agent, a dough strengthening agent, an emulsifier, a sugar, an acylglycerol, a phospholipid, a glycolipid and a salt.

10

31. A method according to claim 1 wherein the enzyme is added in a composition according to any of claims 28-30.

32. A dough obtained by the method of any of claims 1-27 and 31.

15

33. A dough according to claim 32 which is frozen or packaged in a controlled atmosphere.

34. A baked product that is obtained by baking the dough of claim 32.

20

35. A noodle product made from the dough of claim 32.

36. A pasta product made from the dough of claim 32.

METHOD OF IMPROVING DOUGH AND BREAD QUALITY**ABSTRACT**

- 5 Method of preparing a dough, the method comprising adding to the dough an enzyme that is capable of simultaneously hydrolysing a nonpolar lipid, a glycolipid and a phospholipid. One or more substrates for the enzyme may be added, e.g. galactolipids such as digalactodiglyceride (DGDG) or phospholipids, e.g. phosphatidyl choline (PC). The lipid substrates can be added to the dough in the form of cereal lipids such as oat oil.
- 10 The method provides doughs with improved extensibility and reduced stickiness, and baked bread products with high specific volume, improved softness and excellent crumb structure.

1/4

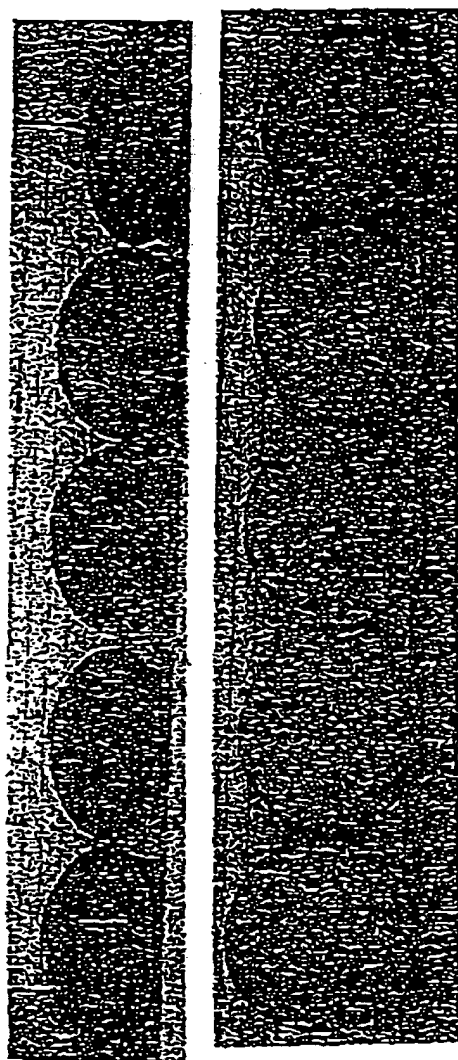


Fig. 1

2/4

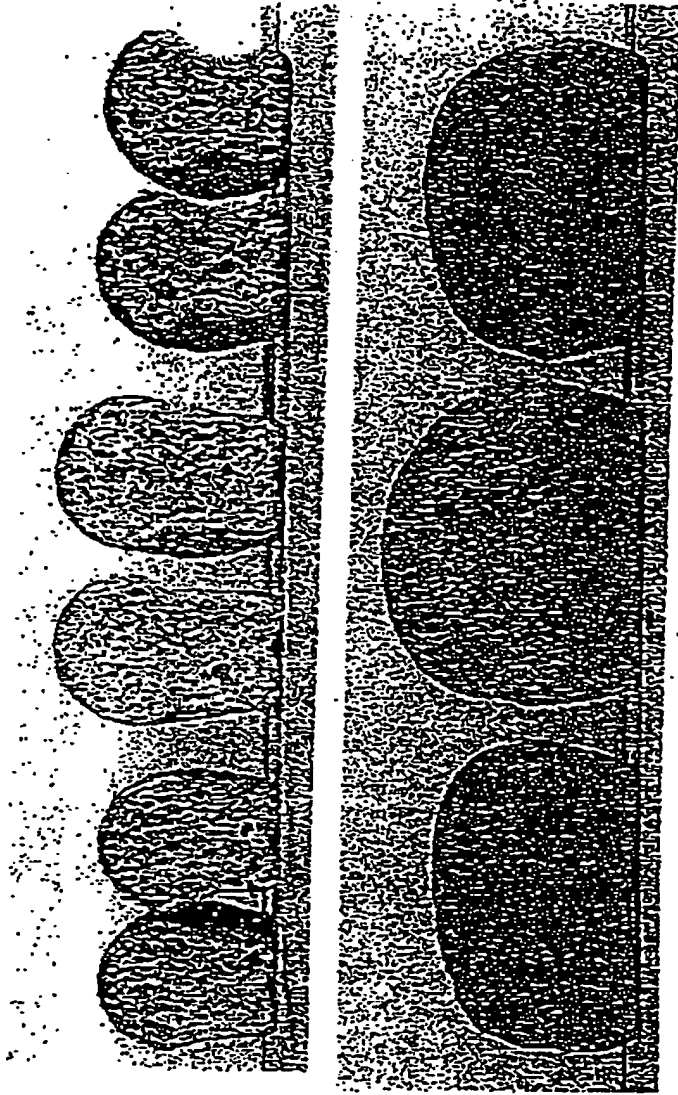


Fig. 2

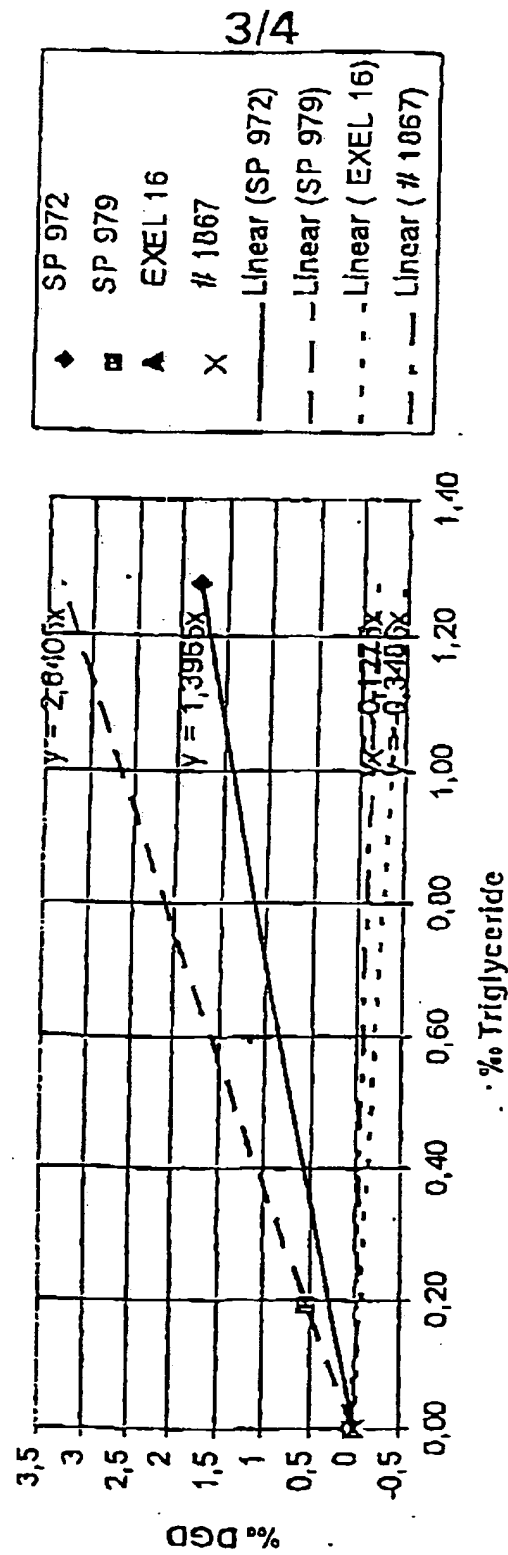


Fig. 3

4/4

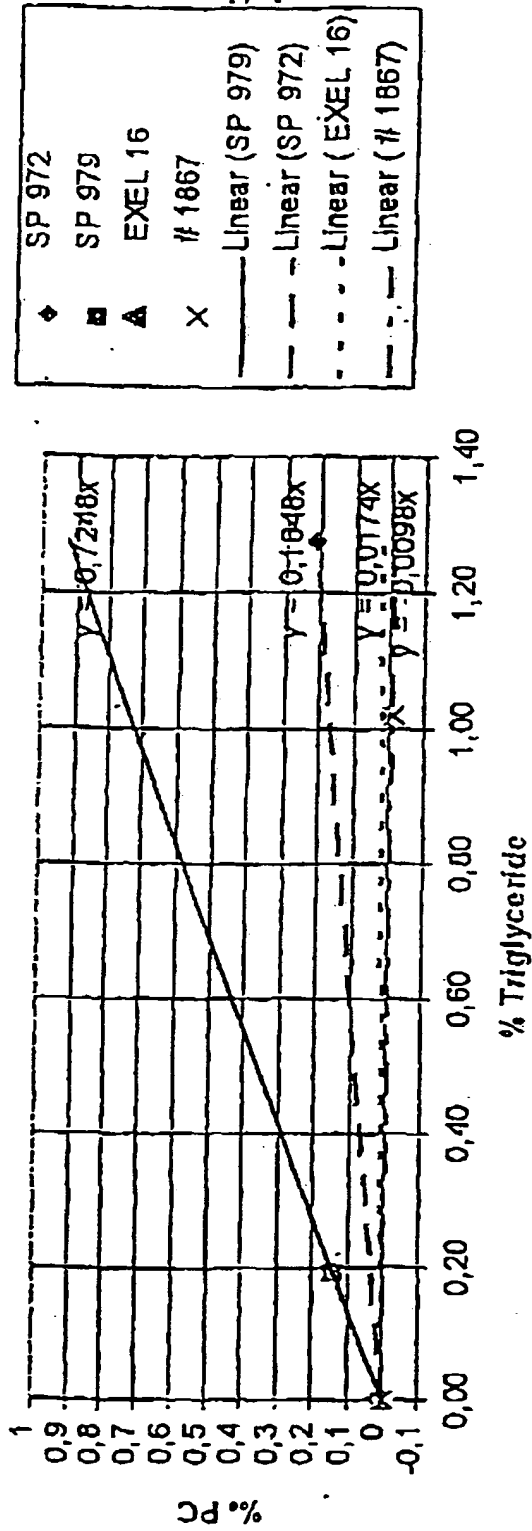


Fig. 4

0.0666667, 0, -0.00475, 0
0.0666667, 0, -0.00475, 0
0.0666667, 0, -0.00475, 0
0.233333, 0, -0.0038, 0
0.4, 0, -0.000475, 0
0.566667, 0, 0.00475, 0
0.733333, 0, 0.000475, 0
0.9, 0, 0.04655, 0
1.06667, 0, 0.00665, 0
1.23333, 0, 0.0038, 0
1.4, 0, -0.006175, 0
1.56667, 0, 0.1501, 0
1.73333, 0, 0.22705, 0
1.9, 0, 0.217075, 0
2.06667, 0, 0.2223, 0
2.23333, 0, 0.212325, 0
2.4, 0, 0.362425, 0
2.56667, 0, 0.541025, 0
2.73333, 0, 1.05593, 0
2.9, 0, 1.16708, 0
3.06667, 0, 1.82828, 0
3.23333, 0, 2.28855, 0
3.4, 0, 2.39068, 0
3.56667, 0, 3.34495, 0
3.73333, 0.9789, 3.35967, 0
3.9, 4.27202, 3.43995, 4.18743
4.06667, 7.56012, 3.62995, 4.18743
4.23333, 10.8432, 3.8304, 4.18743
4.4, 14.2367, 4.0394, 19.8852
4.56667, 17.5248, 4.2541, 19.8852
4.73333, 20.8179, 4.4783, 19.8852
4.9, 24.1562, 4.72103, 19.8852
5.06667, 26.0538, 4.92575, 19.069
5.23333, 26.1893, 4.99558, 19.069
5.4, 26.4002, 4.99035, 19.069
5.56667, 26.4203, 5.00175, 19.069
5.73333, 26.1893, 5.01458, 1.2432
5.9, 25.9634, 5.00745, 1.2432
6.06667, 25.9835, 4.99415, 1.2432
6.23333, 25.9434, 5.00175, 1.2432
6.4, 25.8028, 5.00508, -0.592609
6.56667, 25.9333, 4.99177, -0.592609
6.73333, 26.1442, 4.9932, -0.592609
6.9, 26.1391, 4.99937, -0.592609
7.06667, 26.0237, 5.00745, 0.280869
7.23333, 26.1542, 4.99225, 0.280869
7.4, 26.1291, 5.00222, 0.280869
7.56667, 26.2646, 4.99272, 0.280869
7.73333, 26.1442, 5.0084, 0.215356
7.9, 26.0889, 5.00318, 0.215356
8.06667, 26.0237, 5.00365, 0.215356
8.23333, 26.0237, 5.00222, 0.215356
8.4, 26.099, 4.99843, -0.202557
8.56667, 25.9936, 5.00413, -0.202557
8.73333, 25.9233, 5.00792, -0.202557
8.9, 25.9634, 4.99225, -0.202557

9.06667, 26.1542, 4.99272, -0.00903569
9.23333, 26.1341, 4.9989, -0.00903569
9.4, 26.1191, 4.99843, -0.00903569
9.56667, 26.0689, 4.99985, -0.00903569
9.73333, 26.1191, 4.99795, 0.0692764
9.9, 25.9835, 5.00698, 0.0692764
10.0667, 25.9183, 5.00365, 0.0692764
10.2333, 25.9835, 4.99843, 0.0692764
10.4, 25.9584, 5.00175, -0.234936
10.5667, 26.0337, 5.00175, -0.234936
10.7333, 26.1291, 4.99272, -0.234936
10.9, 26.0538, 5.00222, -0.234936
11.0667, 25.9835, 4.9989, 0.103913
11.2333, 25.9484, 5.0046, 0.103913
11.4, 25.7727, 5.00792, 0.103913
11.5667, 25.7677, 4.99937, 0.103913
11.7333, 25.7225, 4.99795, -0.456316
11.9, 25.8329, 4.99463, -0.456316
12.0667, 26.114, 4.98845, -0.456316
12.2333, 26.0538, 5.00508, -0.456316
12.4, 26.1642, 4.9951, 0.503004
12.5667, 26.0689, 5.00365, 0.503004
12.7333, 26.0789, 4.99843, 0.503004
12.9, 26.0538, 5.00555, 0.503004
13.0667, 25.9132, 5.00603, -0.161894
13.2333, 25.7677, 5.01077, -0.161894
13.4, 25.8128, 5.0008, -0.161894
13.5667, 25.8329, 4.9989, -0.161894
13.7333, 25.7928, 4.99985, -0.26054
13.9, 25.7526, 4.99653, -0.26054
14.0667, 25.9333, 4.99367, -0.26054
14.2333, 25.8379, 5.00555, -0.26054
14.4, 25.863, 5.00127, 0.149849
14.5667, 25.8128, 5.00222, 0.149849
14.7333, 25.863, 4.99558, 0.149849
14.9, 25.9333, 5.0008, 0.149849
15.0667, 26.0036, 5.0008, 0.0835815
15.2333, 26.0739, 4.99463, 0.0835815
15.4, 25.9534, 5.0065, 0.0835815
15.5667, 25.6924, 5.00127, 0.0835815
15.7333, 25.6221, 5.00982, -0.46234
15.9, 25.5267, 5.0103, -0.46234
16.0667, 25.5267, 5.00222, -0.46234
16.2333, 25.4715, 5.00555, -0.198793
16.4, 25.4815, 4.99937, -0.198793
16.5667, 25.6321, 4.99177, -0.198793
16.7333, 24.3621, 5.06825, -0.198793
16.9, 23.3179, 5.04118, -2.74996
17.0667, 22.8661, 5.0179, -2.74996
17.2333, 23.1372, 4.98512, -2.74996
17.4, 23.8249, 4.98085, -2.74996
17.5667, 24.0157, 4.99558, 0.409632
17.7333, 23.6793, 5.01885, 0.409632
17.9, 23.1121, 5.02313, 0.409632
18.0667, 22.7707, 5.01363, 0.409632
18.2333, 22.5498, 5.00792, -1.96307

18.4, 22.6302, 4.9989, -1.96307
18.5667, 22.3942, 5.00603, -1.96307
18.7333, 22.0077, 5.02835, -1.96307
18.9, 21.7215, 5.00555, -1.18673
19.0667, 21.4354, 5.03025, -1.18673
19.2333, 21.0438, 5.02123, -1.18673
19.4, 20.6121, 5.02787, -1.18673
19.5667, 20.0097, 5.02075, -2.42767
19.7333, 19.5077, 5.02787, -2.42767
19.9, 18.8652, 5.03025, -2.42767
20.0667, 18.1724, 5.03357, -2.42767
20.2333, 17.4897, 5.03357, -3.68217
20.4, 16.822, 5.0236, -3.68217
20.5667, 16.5258, 5.01077, -3.68217
20.7333, 16.4455, 5.00698, -3.68217
20.9, 16.2397, 5.00508, -2.19349
21.0667, 16.2799, 5.0046, -2.19349
21.2333, 16.1293, 5.00887, -2.19349
21.4, 16.0138, 5.0046, -2.19349
21.5667, 15.9686, 5.0084, -0.458577
21.7333, 15.803, 5.00887, -0.458577
21.9, 15.7126, 5.00555, -0.458577
22.0667, 15.5118, 5.01458, -0.458577
22.2333, 15.301, 5.01077, -0.91113
22.4, 15.1704, 5.00745, -0.91113
22.5667, 14.9144, 5.0084, -0.91113
22.7333, 14.7337, 5.0103, -0.91113
22.9, 14.7939, 5.00365, -0.954804
23.0667, 14.5178, 5.016, -0.954804
23.2333, 14.2317, 5.0065, -0.954804
23.4, 14.2568, 5.0065, -0.954804
23.5667, 13.8301, 5.02265, -1.14004
23.7333, 13.5891, 5.0103, -1.14004
23.9, 13.3582, 5.0027, -1.14004
24.0667, 13.1825, 5.00745, -1.14004
24.2333, 12.8562, 5.01553, -1.53838
24.4, 12.5149, 5.01458, -1.53838
24.5667, 12.2538, 5.01458, -1.53838
24.7333, 11.9526, 5.01647, -1.53838
24.9, 11.6765, 5.01315, -1.78612
25.0667, 11.4456, 5.0122, -1.78612
25.2333, 11.1293, 5.01315, -1.78612
25.4, 10.8633, 5.0122, -1.78612
25.5667, 10.532, 5.01125, -1.74621
25.7333, 9.97976, 5.02265, -1.74621
25.9, 9.95968, 5.0008, -1.74621
26.0667, 9.72374, 5.00555, -1.74621
26.2333, 9.39242, 5.02123, -1.72663
26.4, 9.19664, 5.00698, -1.72663
26.5667, 8.74484, 5.0179, -1.72663
26.7333, 8.51392, 5.01553, -1.72663
26.9, 8.283, 5.01315, -1.68672
27.0667, 7.84124, 5.0236, -1.68672
27.2333, 7.64546, 5.0122, -1.68672
27.4, 7.76594, 4.9951, -1.68672
27.5667, 7.3292, 5.01742, -1.17167

27.7333, 6.94768, 4.9989, -1.17167
27.9, 6.54106, 6.16645, -1.17167
28.0667, 3.25798, 10.0254, -1.17167
28.2333, 5.0953, 9.69, -5.6731
28.4, 6.55612, 9.9522, -5.6731
28.5667, 7.09326, 9.994, -5.6731
28.7333, 7.57518, 9.97738, -5.6731
28.9, 7.67056, 9.9921, 5.74087
29.0667, 7.97678, 9.98592, 5.74087
29.2333, 8.15248, 9.99543, 5.74087
29.4, 8.42858, 9.9883, 5.74087
29.5667, 8.40348, 10.003, 1.20405
29.7333, 8.59424, 9.9864, 1.20405
29.9, 8.77496, 9.99495, 1.20405
30.0667, 8.81512, 9.99922, 1.20405
30.2333, 9.01592, 9.9921, 0.721375
30.4, 9.02094, 9.99827, 0.721375
30.5667, 9.14142, 9.99685, 0.721375
30.7333, 9.24684, 9.99305, 0.721375
30.9, 9.42756, 9.98402, 0.658875
31.0667, 9.45266, 9.99827, 0.658875
31.2333, 9.59322, 9.99163, 0.658875
31.4, 9.76892, 9.9921, 0.658875
31.5667, 9.80406, 9.99827, 0.643061
31.7333, 9.8894, 9.99115, 0.643061
31.9, 9.89944, 9.99827, 0.643061
32.0667, 10.2057, 9.98117, 0.604408
32.2333, 10.045, 10.0121, 0.604408
32.4, 10.1103, 9.99827, 0.604408
32.5667, 10.2458, 9.9902, 0.604408
32.7333, 10.4014, 9.9864, 0.372736
32.9, 10.5069, 9.9959, 0.372736
33.0667, 10.552, 9.99827, 0.372736
33.2333, 10.5721, 9.99922, 0.372736
33.4, 10.7478, 9.99638, 0.536889
33.5667, 10.6625, 9.99258, 0.536889
33.7333, 10.8131, 9.994, 0.536889
33.9, 10.8834, 10.0016, 0.536889
34.0667, 10.9787, 9.9978, 0.423186
34.2333, 11.0942, 9.994, 0.423186
34.4, 11.2046, 10.0002, 0.423186
34.5667, 11.3854, 9.99495, 0.423186
34.7333, 11.1745, 10.0035, 0.388549
34.9, 11.1896, 10.0106, 0.388549
35.0667, 11.4506, 9.98402, 0.388549
35.2333, 11.4456, 10.0049, 0.388549
35.4, 11.5309, 9.99733, 0.362945
35.5667, 11.6163, 9.99258, 0.362945
35.7333, 11.6313, 10.0016, 0.362945
35.9, 11.807, 9.98925, 0.362945
36.0667, 11.8723, 10.0054, 0.605412
36.2333, 11.8673, 10.0054, 0.605412
36.4, 11.9275, 9.99495, 0.605412
36.5667, 11.9727, 9.99543, 0.605412
36.7333, 12.0631, 9.9978, 0.205569
36.9, 12.1082, 9.99685, 0.205569

37.0667, 12.2588, 9.99068, 0.205569
37.2333, 12.0932, 10.0021, 0.205569
37.4, 12.1534, 9.96787, 0.0376501
37.5667, 12.309, 9.99733, 0.0376501
37.7333, 12.289, 9.9978, 0.0376501
37.9, 12.2639, 9.99922, 0.0376501
38.0667, 12.2538, 10.0102, 0.377253
38.2333, 12.4044, 9.98925, 0.377253
38.4, 12.3492, 10.0035, 0.377253
38.5667, 12.4596, 9.98782, 0.377253
38.7333, 12.6102, 9.99922, 0.362193
38.9, 11.4356, 10.0572, 0.362193
39.0667, 10.8231, 10.0125, 0.362193
39.2333, 11.4707, 9.97025, 0.362193
39.4, 11.8372, 9.98687, -1.2929
39.5667, 11.8924, 9.9959, -1.2929
39.7333, 11.9978, 9.9997, -1.2929
39.9, 11.9878, 10.0054, -1.2929
40.0667, 11.8472, 10.0064, 0.348638
40.2333, 11.6765, 10.0083, 0.348638
40.4, 11.5058, 10.0111, 0.348638
40.5667, 11.4054, 10.0064, 0.348638
40.7333, 11.4456, 9.9959, -0.74547
40.9, 11.3402, 10.004, -0.74547
41.0667, 11.3552, 10.0044, -0.74547
41.2333, 11.3452, 10.0021, -0.74547
41.4, 11.3653, 10.0021, -0.0557215
41.5667, 11.4105, 10.0011, -0.0557215
41.7333, 11.3452, 9.99922, -0.0557215
41.9, 11.2799, 9.99827, -0.0557215
42.0667, 11.4556, 9.98877, 0.0572274
42.2333, 11.4205, 10.0006, 0.0572274
42.4, 11.4305, 9.9997, 0.0572274
42.5667, 11.4757, 10.0021, 0.0572274
42.7333, 11.4757, 9.99638, 0.0918657
42.9, 11.4105, 10.0073, 0.0918657
43.0667, 11.2749, 10.0054, 0.0918657
43.2333, 11.4004, 9.9902, 0.0918657
43.4, 11.3703, 9.99353, -0.171684
43.5667, 11.3502, 10.0054, -0.171684
43.7333, 11.1745, 10.013, -0.171684
43.9, 11.3803, 9.99733, -0.171684
44.0667, 11.4356, 9.99638, 0.15813
44.2333, 11.3452, 10.0006, 0.15813
44.4, 11.4607, 9.99733, 0.15813
44.5667, 11.3402, 10.0049, 0.15813
44.7333, 11.2649, 10.003, -0.247737
44.9, 11.3402, 9.9959, -0.247737
45.0667, 11.4205, 9.9978, -0.247737
45.2333, 11.3854, 10.0016, -0.247737
45.4, 11.4607, 9.99827, 0.18599
45.5667, 11.4858, 9.99258, 0.18599
45.7333, 11.4607, 9.9997, 0.18599
45.9, 11.4958, 9.99733, 0.18599
46.0667, 11.3552, 10.0097, 0.0429209
46.2333, 11.5058, 9.99115, 0.0429209

46.4, 11.4205, 10.0064, 0.0429209
46.5667, 11.4155, 10.0011, 0.0429209
46.7333, 11.5661, 9.98973, 0.0978909
46.9, 11.5008, 10.0016, 0.0978909
47.0667, 11.546, 10.0021, 0.0978909
47.2333, 11.6414, 9.99733, 0.0978909
47.4, 11.4958, 10.0102, 0.0512036
47.5667, 11.4607, 10.0049, 0.0512036
47.7333, 11.4155, 10.0002, 0.0512036
47.9, 11.3402, 10.0054, 0.0512036
48.0667, 11.3301, 9.99305, -0.372735
48.2333, 11.2348, 10.0068, -0.372735
48.4, 11.3452, 9.99258, -0.372735
48.5667, 11.3452, 9.9978, -0.372735
48.7333, 11.1745, 10.0011, 0.0662645
48.9, 11.1193, 10.0068, 0.0662645
49.0667, 11.1293, 9.99305, 0.0662645
49.2333, 11.3753, 9.9864, 0.0662645
49.4, 11.5058, 9.99875, 0.189002
49.5667, 11.5109, 9.99685, 0.189002
49.7333, 11.4305, 10.0021, 0.189002
49.9, 11.4004, 10.0078, 0.189002
50.0667, 11.3653, 10.0106, -0.158883
50.2333, 11.4908, 10.0035, -0.158883
50.4, 11.4305, 9.9959, -0.158883
50.5667, 11.4757, 9.94887, -0.158883
50.7333, 11.5811, 10.0083, 0.106174
50.9, 10.9687, 10.0011, 0.106174
51.0667, 11.3402, 9.71518, 0.106174
51.2333, 11.4456, 9.80922, 0.106174
51.4, 11.3402, 10.1004, 0.132528
51.5667, 11.285, 9.98925, 0.132528
51.7333, 11.049, 9.98023, 0.132528
51.9, 11.1896, 9.99543, 0.132528
52.0667, 11.2799, 10.0078, -0.381771
52.2333, 11.1444, 10.0059, -0.381771
52.4, 11.1293, 10.0021, -0.381771
52.5667, 10.9185, 10.0064, -0.381771
52.7333, 10.8131, 10.0306, -0.559479
52.9, 11.0189, 10.0367, -0.559479
53.0667, 11.1243, 10.0116, -0.559479
53.2333, 14.4626, 10.2168, -0.559479
53.4, 17.7457, 10.687, 8.07894
53.5667, 20.7828, 12.0099, 8.07894
53.7333, 24.1261, 14.5017, 8.07894
53.9, 25.5267, 14.9359, 8.07894
54.0667, 25.6924, 14.9839, 13.9945
54.2333, 25.6221, 15.0005, 13.9945
54.4, 25.6522, 14.9939, 13.9945
54.5667, 25.7375, 14.9891, 13.9945
54.7333, 25.597, 15.0086, 0.134787
54.9, 25.4614, 14.9976, 0.134787
55.0667, 25.4715, 15.0019, 0.134787
55.2333, 25.4012, 15.001, 0.134787
55.4, 25.3962, 14.9972, -0.453304
55.5667, 25.3209, 15.0029, -0.453304

55.7333, 25.3008, 14.9986, -0.453304
55.9, 25.2456, 14.9976, -0.453304
56.0667, 25.2155, 15.0038, -0.266561
56.2333, 25.1703, 14.9958, -0.266561
56.4, 25.1452, 15.0072, -0.266561
56.5667, 25.0799, 15.0081, -0.266561
56.7333, 25.1201, 14.9995, -0.152861
56.9, 24.8992, 14.9269, -0.152861
57.0667, 25.1502, 14.9872, -0.152861
57.2333, 25.2355, 14.9843, -0.152861
57.4, 24.9745, 15.0147, -0.0233436
57.5667, 24.8691, 15.001, -0.0233436
57.7333, 24.8289, 15.001, -0.0233436
57.9, 24.7787, 15.0033, -0.0233436
58.0667, 24.7586, 14.9972, -0.497731
58.2333, 24.6582, 15.0091, -0.497731
58.4, 24.6131, 14.9986, -0.497731
58.5667, 24.5829, 15.0014, -0.497731
58.7333, 24.598, 15, -0.207075
58.9, 24.4574, 15.0043, -0.207075
59.0667, 24.5327, 15.0014, -0.207075
59.2333, 24.4123, 15.0043, -0.207075
59.4, 24.4123, 15, -0.382525
59.5667, 24.4574, 14.9995, -0.382525
59.7333, 24.4474, 15, -0.382525
59.9, 24.2817, 15.0038, -0.382525
60.0667, 24.2516, 15.0019, -0.106174
60.2333, 24.2767, 14.9995, -0.106174
60.4, 24.2366, 15.0067, -0.106174
60.5667, 24.1562, 15.0024, -0.106174
60.7333, 24.1512, 14.9981, -0.226652
60.9, 24.0358, 15.0019, -0.226652
61.0667, 24.0659, 15.0038, -0.226652
61.2333, 23.9203, 15.0043, -0.226652
61.4, 23.845, 14.9972, -0.375747
61.5667, 23.9052, 15.0014, -0.375747
61.7333, 23.845, 14.9976, -0.375747
61.9, 23.8852, 14.9958, -0.375747
62.0667, 23.8048, 15.0033, -0.081324
62.2333, 23.8299, 14.9958, -0.081324
62.4, 23.7697, 14.9939, -0.081324
62.5667, 23.7095, 15.0043, -0.081324
62.7333, 23.6693, 15.0024, -0.240206
62.9, 23.6593, 14.9995, -0.240206
63.0667, 23.599, 14.9929, -0.240206
63.2333, 23.0418, 15.0375, -0.240206
63.4, 22.5197, 15.029, -1.47061
63.5667, 23.1322, 14.9701, -1.47061
63.7333, 24.2165, 14.9573, -1.47061
63.9, 25.5568, 14.9397, -1.47061
64.0667, 26.7014, 14.9463, 5.25218
64.2333, 27.7154, 14.9573, 5.25218
64.4, 28.4785, 14.9644, 5.25218
64.5667, 29.1863, 14.9677, 5.25218
64.7333, 29.7887, 14.9706, 5.00519
64.9, 30.4363, 14.9663, 5.00519

65.0667, 30.9282, 14.9824, 5.00519
65.2333, 31.4101, 14.9715, 5.00519
65.4, 31.8921, 14.9739, 3.29061
65.5667, 32.2585, 14.981, 3.29061
65.7333, 32.5848, 14.9829, 3.29061
65.9, 32.891, 14.9801, 3.29061
66.0667, 33.1621, 14.9805, 1.96985
66.2333, 33.4483, 14.9862, 1.96985
66.4, 33.6842, 14.9924, 1.96985
66.5667, 33.895, 14.9901, 1.96985
66.7333, 34.1109, 14.9891, 1.42919
66.9, 34.2816, 14.9915, 1.42919
67.0667, 34.3268, 14.991, 1.42919
67.2333, 34.4422, 14.9924, 1.42919
67.4, 34.5175, 14.992, 0.705561
67.5667, 34.5125, 15.0048, 0.705561
67.7333, 34.4221, 15.0014, 0.705561
67.9, 34.5326, 14.9995, 0.705561
68.0667, 34.3017, 15.0124, -0.115961
68.2333, 34.126, 15.0067, -0.115961
68.4, 34.0105, 15.0105, -0.115961
68.5667, 34.0205, 14.9953, -0.115961
68.7333, 33.9302, 15.0014, -0.639299
68.9, 33.9352, 14.9953, -0.639299
69.0667, 33.7896, 15.0053, -0.639299
69.2333, 33.7645, 15.0038, -0.639299
69.4, 33.7093, 15.0033, -0.338847
69.5667, 33.7143, 14.9939, -0.338847
69.7333, 33.644, 15.0062, -0.338847
69.9, 33.6641, 14.9953, -0.338847
70.0667, 33.5286, 15.01, -0.262046
70.2333, 33.6541, 14.9934, -0.262046
70.4, 33.5537, 15.0076, -0.262046
70.5667, 33.4633, 15.0057, -0.262046
70.7333, 33.5085, 15, -0.100147
70.9, 33.4633, 14.9953, -0.100147
71.0667, 33.378, 15.0019, -0.100147
71.2333, 33.4985, 14.9962, -0.100147
71.4, 33.6491, 14.9948, 0.16566
71.5667, 33.5236, 15.0053, 0.16566
71.7333, 33.4483, 14.9976, 0.16566
71.9, 33.4985, 14.9991, 0.16566
72.0667, 33.383, 15.0053, -0.232676
72.2333, 33.393, 14.9939, -0.232676
72.4, 33.4633, 14.9939, -0.232676
72.5667, 33.5085, 15.0014, -0.232676
72.7333, 33.4382, 15.0072, 0.0030119
72.9, 33.378, 15.001, 0.0030119
73.0667, 33.3177, 15.0024, 0.0030119
73.2333, 33.6742, 14.9853, 0.0030119
73.4, 33.9252, 14.991, 0.553451
73.5667, 33.7344, 15.0119, 0.553451
73.7333, 33.8147, 14.9943, 0.553451
73.9, 37.1078, 15.3055, 0.553451
74.0667, 40.3859, 15.9766, 7.66027
74.2333, 43.679, 16.6616, 7.66027

74.4, 47.0725, 17.3812, 7.66027
74.5667, 50.3606, 18.087, 7.66027
74.7333, 53.6387, 18.8447, 19.9003
74.9, 56.8967, 19.6251, 19.9003
75.0667, 57.0824, 19.9961, 19.9003
75.2333, 57.1929, 19.9918, 19.9003
75.4, 57.3033, 19.9909, 7.56464
75.5667, 57.3334, 19.9989, 7.56464
75.7333, 57.4188, 19.9947, 7.56464
75.9, 57.5292, 19.9918, 7.56464
76.0667, 57.5593, 19.9994, 0.393821
76.2333, 57.6246, 19.9961, 0.393821
76.4, 57.6748, 19.9961, 0.393821
76.5667, 57.8003, 19.997, 0.393821
76.7333, 57.7852, 20.0008, 0.356918
76.9, 57.7551, 20.0051, 0.356918
77.0667, 57.8404, 19.9942, 0.356918
77.2333, 57.9459, 19.9904, 0.356918
77.4, 58.0864, 19.9989, 0.397587
77.5667, 58.0513, 19.9871, 0.397587
77.7333, 58.1416, 19.9999, 0.397587
77.9, 58.1467, 20.0032, 0.397587
78.0667, 58.2973, 20.007, 0.286136
78.2333, 58.1918, 19.9994, 0.286136
78.4, 58.3977, 19.997, 0.286136
78.5667, 58.3173, 20.0013, 0.286136
78.7333, 58.4127, 19.9994, 0.250753
78.9, 58.493, 20.0041, 0.250753
79.0667, 58.493, 19.9999, 0.250753
79.2333, 58.5483, 20.0003, 0.250753
79.4, 58.5583, 20.0027, 0.313997
79.5667, 58.5934, 19.9937, 0.313997
79.7333, 58.6788, 20.0032, 0.313997
79.9, 58.7039, 19.9923, 0.313997
80.0667, 58.7491, 20.0027, 0.253765
80.2333, 58.739, 19.9999, 0.253765
80.4, 58.8093, 19.9947, 0.253765
80.5667, 58.8394, 19.9984, 0.253765
80.7333, 58.9549, 19.9965, 0.201048
80.9, 58.995, 20.0022, 0.201048
81.0667, 58.975, 20.0065, 0.201048
81.2333, 59.1406, 19.9928, 0.201048
81.4, 59.1507, 19.9928, 0.351654
81.5667, 59.1356, 19.9951, 0.351654
81.7333, 59.2009, 20.0013, 0.351654
81.9, 59.2209, 19.9823, 0.351654
82.0667, 59.1456, 19.9984, 0.0624955
82.2333, 59.3013, 19.9965, 0.0624955
82.4, 59.3916, 19.9937, 0.0624955
82.5667, 59.3665, 20.0094, 0.0624955
82.7333, 59.2611, 19.9956, 0.202557
82.9, 59.4167, 19.9913, 0.202557
83.0667, 59.3966, 20.0008, 0.202557
83.2333, 59.4719, 20.0084, 0.202557
83.4, 59.1557, 20.0208, 0.0180714
83.5667, 58.6487, 20.0175, 0.0180714

83.7333, 58.8394, 19.9947, 0.0180714
83.9, 58.483, 20.0246, 0.0180714
84.0667, 58.478, 19.9937, -1.24546
84.2333, 58.4629, 19.9989, -1.24546
84.4, 58.3173, 20.0079, -1.24546
84.5667, 58.2471, 19.997, -1.24546
84.7333, 58.2069, 20.007, -0.30647
84.9, 58.1266, 19.9999, -0.30647
85.0667, 58.1065, 19.9984, -0.30647
85.2333, 58.0613, 19.9999, -0.30647
85.4, 58.0764, 20.0051, -0.259783
85.5667, 58.0312, 19.9975, -0.259783
85.7333, 58.0312, 20.0065, -0.259783
85.9, 57.981, 19.9984, -0.259783
86.0667, 58.0061, 19.9961, -0.212347
86.2333, 57.986, 19.9956, -0.212347
86.4, 57.8655, 20.0003, -0.212347
86.5667, 57.8957, 19.9989, -0.212347
86.7333, 57.9107, 19.9937, -0.0707824
86.9, 58.0111, 20.0027, -0.0707824
87.0667, 57.9509, 20.0013, -0.0707824
87.2333, 57.981, 20.0003, -0.0707824
87.4, 57.9408, 20.0037, 0.0873506
87.5667, 57.9459, 19.9961, 0.0873506
87.7333, 57.8957, 19.9999, 0.0873506
87.9, 57.8906, 19.9965, 0.0873506
88.0667, 57.8204, 20.006, -0.17545
88.2333, 57.9057, 19.9984, -0.17545
88.4, 57.8655, 20.0041, -0.17545
88.5667, 57.9961, 19.9923, -0.17545
88.7333, 57.981, 20.0065, 0.203306
88.9, 57.9659, 20.0008, 0.203306
89.0667, 57.9659, 19.9975, 0.203306
89.2333, 57.9208, 20.0094, 0.203306
89.4, 57.971, 19.9994, -0.0338797
89.5667, 58.0412, 19.989, -0.0338797
89.7333, 58.1316, 19.9961, -0.0338797
89.9, 58.1718, 20.0041, -0.0338797
90.0667, 58.1366, 19.9942, 0.254514
90.2333, 58.237, 20.0003, 0.254514
90.4, 58.237, 20.0027, 0.254514
90.5667, 58.3525, 19.9918, 0.254514
90.7333, 58.2671, 20.007, 0.275597
90.9, 58.2671, 20.0003, 0.275597
91.0667, 58.227, 19.9989, 0.275597
91.2333, 58.3274, 20.0018, 0.275597
91.4, 58.3726, 19.9984, 0.0451785
91.5667, 58.4428, 19.9951, 0.0451785
91.7333, 58.3475, 19.9999, 0.0451785
91.9, 58.3274, 20.0032, 0.0451785
92.0667, 58.478, 19.9923, 0.128763
92.2333, 58.488, 19.9994, 0.128763
92.4, 58.4629, 20.0008, 0.128763
92.5667, 58.5533, 19.9961, 0.128763
92.7333, 58.5884, 19.9994, 0.205569
92.9, 58.4679, 20.0037, 0.205569

93.0667, 58.6135, 19.9951, 0.205569
93.2333, 58.5382, 20.0032, 0.205569
93.4, 58.6135, 19.9942, 0
93.5667, 58.6687, 19.998, 0
93.7333, 58.5683, 20.0041, 0
93.9, 58.6687, 19.9932, 0
94.0667, 58.6035, 20.0051, 0.141565
94.2333, 58.5834, 20.0065, 0.141565
94.4, 58.744, 19.9928, 0.141565
94.5667, 58.6637, 20.0037, 0.141565
94.7333, 58.6938, 19.9975, -0.00828132
94.9, 58.8244, 19.998, -0.00828132
95.0667, 58.734, 20.0065, -0.00828132
95.2333, 58.8294, 19.9994, -0.00828132
95.4, 58.8394, 19.9975, 0.266561
95.5667, 58.8444, 20.0084, 0.266561
95.7333, 58.5332, 20.0117, 0.266561
95.9, 60.9779, 19.5653, 0.266561
96.0667, 64.256, 18.7957, 5.96451
96.2333, 65.4357, 22.1948, 5.96451
96.4, 68.3875, 25.9663, 5.96451
96.5667, 71.6756, 26.7278, 5.96451
96.7333, 74.9637, 27.6502, 16.0766
96.9, 78.307, 28.6164, 16.0766
97.0667, 81.5951, 29.2591, 16.0766
97.2333, 83.6985, 29.8837, 16.0766
97.4, 84.0448, 29.9844, 15.572
97.5667, 84.3059, 29.9882, 15.572
97.7333, 84.5117, 29.9877, 15.572
97.9, 84.5468, 30.0029, 15.572
98.0667, 84.3962, 30.0072, 0.792917
98.2333, 84.5719, 29.9891, 0.792917
98.4, 84.7727, 29.9901, 0.792917
98.5667, 84.9334, 29.991, 0.792917
98.7333, 85.1191, 29.9915, 0.887789
98.9, 85.1844, 29.9977, 0.887789
99.0667, 85.3952, 29.9844, 0.887789
99.2333, 85.5107, 29.9934, 0.887789
99.4, 85.6864, 29.9962, 0.841845
99.5667, 85.7868, 30.0015, 0.841845
99.7333, 85.847, 29.9986, 0.841845
99.9, 85.9273, 29.9948, 0.841845
100.067, 86.0579, 29.9887, 0.600144
100.233, 86.1733, 29.9943, 0.600144
100.4, 86.1984, 29.9934, 0.600144
100.567, 86.4143, 29.9981, 0.600144
100.733, 86.4846, 29.9929, 0.637796
100.9, 86.5649, 29.9967, 0.637796
101.067, 86.6904, 29.9939, 0.637796
101.233, 86.7908, 29.9967, 0.637796
101.4, 86.9263, 29.9958, 0.684477
101.567, 87.0669, 29.9996, 0.684477
101.733, 87.1974, 29.9915, 0.684477
101.9, 87.3028, 29.9962, 0.684477
102.067, 87.4082, 29.9891, 0.723626
102.233, 87.5086, 29.9891, 0.723626

102.4, 87.609, 29.9948, 0.723626
102.567, 87.6944, 29.9948, 0.723626
102.733, 87.8299, 29.9981, 0.560984
102.9, 87.86, 30, 0.560984
103.067, 87.9855, 29.9901, 0.560984
103.233, 88.1161, 29.9915, 0.560984
103.4, 88.2215, 29.9863, 0.647586
103.567, 88.3369, 29.9948, 0.647586
103.733, 88.4524, 29.9929, 0.647586
103.9, 88.5076, 29.9981, 0.647586
104.067, 88.6532, 29.991, 0.645317
104.233, 88.7586, 29.9972, 0.645317
104.4, 88.8389, 29.9906, 0.645317
104.567, 88.9695, 29.9953, 0.645317
104.733, 89.0598, 29.9906, 0.682969
104.9, 89.2104, 29.9896, 0.682969
105.067, 89.2958, 29.9948, 0.682969
105.233, 89.4162, 29.9943, 0.682969
105.4, 89.4664, 29.9958, 0.521835
105.567, 89.5166, 29.9958, 0.521835
105.733, 89.612, 29.9939, 0.521835
105.9, 89.7526, 29.9934, 0.521835
106.067, 89.8128, 30.0062, 0.540655
106.233, 89.858, 30.0029, 0.540655
106.4, 88.864, 30.0765, 0.540655
106.567, 88.2265, 30.0285, 0.540655
106.733, 88.2616, 29.9863, -2.33581
106.9, 88.8841, 29.9673, -2.33581
107.067, 89.4213, 29.9801, -2.33581
107.233, 89.9835, 29.9711, -2.33581
107.4, 90.5508, 29.9663, 3.13851
107.567, 91.0929, 29.9782, 3.13851
107.733, 91.5548, 29.9768, 3.13851
107.9, 92.0317, 29.9782, 3.13851
108.067, 92.4232, 29.983, 2.93067
108.233, 92.86, 29.9853, 2.93067
108.4, 93.2766, 29.9758, 2.93067
108.567, 93.6832, 29.9844, 2.93067
108.733, 94.1049, 29.9773, 2.51729
108.9, 94.5316, 29.9753, 2.51729
109.067, 94.888, 29.973, 2.51729
109.233, 95.2244, 29.9877, 2.51729
109.4, 95.4352, 29.9891, 2.09936
109.567, 95.882, 29.9834, 2.09936
109.733, 96.3087, 29.9925, 2.09936
109.9, 96.6902, 29.9834, 2.09936
110.067, 97.137, 29.9768, 2.41034
110.233, 97.5436, 29.9806, 2.41034
110.4, 98.0356, 29.9763, 2.41034
110.567, 98.4522, 29.9792, 2.41034
110.733, 98.9442, 29.9739, 2.72059
110.9, 99.4211, 29.9768, 2.72059
111.067, 99.888, 29.9773, 2.72059
111.233, 100.305, 29.9815, 2.72059
111.4, 100.711, 29.9773, 2.61894
111.567, 101.163, 29.9834, 2.61894

111.733, 101.354, 29.9882, 2.61894
111.9, 101.665, 29.9906, 2.61894
112.067, 101.951, 29.9792, 1.98415
112.233, 102.428, 29.9787, 1.98415
112.4, 102.935, 29.9758, 1.98415
112.567, 103.337, 29.9815, 1.98415
112.733, 103.854, 29.9796, 2.72661
112.9, 104.336, 29.9806, 2.72661
113.067, 104.787, 29.9739, 2.72661
113.233, 105.254, 29.9863, 2.72661
113.4, 105.686, 29.9782, 2.75975
113.567, 106.213, 29.9768, 2.75975
113.733, 106.61, 29.9834, 2.75975
113.9, 107.067, 29.9692, 2.75975
114.067, 107.508, 29.9815, 2.75749
114.233, 108.05, 29.9711, 2.75749
114.4, 108.723, 29.962, 2.75749
114.567, 109.185, 29.9749, 2.75749
114.733, 109.632, 29.9801, 3.19799
114.9, 110.069, 29.9787, 3.19799
115.067, 110.51, 29.9773, 3.19799
115.233, 111.007, 29.9806, 3.19799
115.4, 111.454, 29.9806, 2.73038
115.567, 111.926, 29.9768, 2.73038
115.733, 112.413, 29.9811, 2.73038
115.9, 112.84, 29.9763, 2.73038
116.067, 113.377, 29.9792, 2.77782
116.233, 113.803, 29.9777, 2.77782
116.4, 114.29, 29.9725, 2.77782
116.567, 114.782, 29.9801, 2.77782
116.733, 115.284, 29.9758, 2.93595
116.9, 115.726, 29.9863, 2.93595
117.067, 116.198, 29.9753, 2.93595
117.233, 116.675, 29.9763, 2.93595
117.4, 117.137, 29.9758, 2.77556
117.567, 117.634, 29.9692, 2.77556
117.733, 118.08, 29.9792, 2.77556
117.9, 118.562, 29.9749, 2.77556
118.067, 119.089, 29.973, 2.86215
118.233, 119.501, 29.9782, 2.86215
118.4, 120.008, 29.9749, 2.86215
118.567, 120.475, 29.9806, 2.86215
118.733, 120.992, 29.9825, 2.92088
118.9, 121.474, 29.9673, 2.92088
119.067, 121.956, 29.9834, 2.92088
119.233, 122.573, 29.9692, 2.92088
119.4, 123.05, 29.9744, 3.11742
119.567, 123.597, 29.9777, 3.11742
119.733, 123.999, 29.9849, 3.11742
119.9, 124.481, 29.9768, 3.11742
120.067, 124.993, 29.9739, 2.86215
120.233, 125.49, 29.9763, 2.86215
120.4, 125.912, 29.9839, 2.86215
120.567, 126.394, 29.9777, 2.86215
120.733, 126.891, 29.9787, 2.85387
120.9, 127.418, 29.9763, 2.85387

121.067, 127.92, 29.9725, 2.85387
121.233, 128.381, 29.9815, 2.85387
121.4, 128.863, 29.9834, 2.95477
121.567, 129.335, 29.9734, 2.95477
121.733, 129.893, 29.9806, 2.95477
121.9, 130.369, 29.9801, 2.95477
122.067, 130.896, 29.9787, 3.03836
122.233, 131.343, 29.9715, 3.03836
122.4, 133.1, 29.8666, 3.03836
122.567, 136.388, 29.1308, 3.03836
122.733, 139.676, 28.4943, 11.371
122.9, 143.07, 28.6734, 11.371
123.067, 141.875, 33.8865, 11.371
123.233, 142.197, 34.1796, 11.371
123.4, 145.54, 35.9, 8.69941
123.567, 148.818, 37.2604, 8.69941
123.733, 152.211, 38.2299, 8.69941
123.9, 155.505, 38.6655, 8.69941
124.067, 158.788, 39.2279, 19.9282
124.233, 162.071, 39.3343, 19.9282
124.4, 165.464, 31.8426, 19.9282
124.567, 168.752, 21.4159, 19.9282
124.733, 172.04, 20.7038, 19.8814
124.9, 175.429, 22.1488, 19.8814
125.067, 178.722, 23.6583, 19.8814
125.233, 182.015, 25.233, 19.8814
125.4, 185.293, 26.9121, 19.8845
125.567, 188.637, 28.6914, 19.8845
125.733, 191.925, 30.3796, 19.8845
125.9, 195.268, 32.0041, 19.8845
126.067, 198.551, 33.5008, 19.9161
126.233, 201.95, 34.9196, 19.9161
126.4, 205.233, 36.3247, 19.9161
126.567, 208.566, 37.4533, 19.9161
126.733, 211.854, 36.6662, 19.9116
126.9, 215.248, 27.3719, 19.9116
127.067, 218.536, 28.5979, 19.9116
127.233, 221.814, 30.342, 19.9116
127.4, 224.67, 33.6295, 19.8634
127.567, 226.789, 30.8859, 19.8634
127.733, 230.072, 22.1592, 19.8634
127.9, 233.36, 23.7158, 19.8634
128.067, 236.653, 25.7441, 17.3484
128.233, 239.996, 27.968, 17.3484
128.4, 243.279, 30.2566, 17.3484
128.567, 246.678, 32.6477, 17.3484
128.733, 249.961, 35.1334, 19.9455
128.9, 253.244, 37.3369, 19.9455
129.067, 256.632, 32.9451, 19.9455
129.233, 259.926, 33.2049, 19.9455
129.4, 263.209, 35.0222, 19.9025
129.567, 266.607, 36.4828, 19.9025
129.733, 268.359, 35.0374, 19.9025
129.9, 270.749, 29.6143, 19.9025
130.067, 272.114, 32.3708, 13.6098
130.233, 275.397, 25.6087, 13.6098

130.4, 278.796, 28.5128, 13.6098
130.567, 282.074, 32.385, 13.6098
130.733, 285.362, 36.5303, 19.6285
130.9, 287.445, 39.7081, 19.6285
131.067, 287.877, 39.966, 19.6285
131.233, 288.143, 39.985, 19.6285
131.4, 288.655, 39.9703, 6.76042
131.567, 289.704, 39.9556, 6.76042
131.733, 290.432, 39.967, 6.76042
131.9, 290.849, 39.9665, 6.76042
132.067, 288.268, 37.8523, 1.88854
132.233, 284.875, 33.0358, 1.88854
132.4, 280.934, 29.1783, 1.88854
132.567, 272.691, 23.9761, 1.88854
132.733, 264.183, 17.1993, -32.5989
132.9, 255.935, 12.2749, -32.5989
133.067, 251.306, 9.65675, -32.5989
133.233, 243.068, 7.2143, -32.5989
133.4, 234.695, 5.07205, -44.3555
133.567, 226.457, 3.64657, -44.3555
133.733, 223.706, 2.83527, -44.3555
133.9, 227.045, 10.2149, -44.3555
134.067, 230.333, 12.9751, -14.3296
134.233, 233.616, 24.101, -14.3296
134.4, 236.954, 31.749, -14.3296
134.567, 240.247, 35.9499, -14.3296
134.733, 243.585, 37.7288, 19.904
134.9, 246.869, 38.9581, 19.904
135.067, 250.262, 35.0503, 19.904
135.233, 253.55, 27.4968, 19.904
135.4, 256.833, 28.006, 19.901
135.567, 260.121, 29.4633, 19.901
135.733, 263.465, 32.1029, 19.901
135.9, 266.753, 35.3367, 19.901
136.067, 269.81, 38.8531, 19.8483
136.233, 270.478, 39.9898, 19.8483
136.4, 270.734, 39.976, 19.8483
136.567, 271.256, 39.986, 19.8483
136.733, 271.462, 39.9855, 4.07222
136.9, 271.702, 39.9831, 4.07222
137.067, 272.074, 39.9936, 4.07222
137.233, 272.139, 40.0016, 4.07222
137.4, 272.496, 39.9855, 1.5361
137.567, 272.757, 39.9955, 1.5361
137.733, 272.957, 39.9936, 1.5361
137.9, 273.058, 39.9884, 1.5361
138.067, 273.319, 39.9926, 1.38026
138.233, 273.66, 39.9765, 1.38026
138.4, 273.861, 39.9874, 1.38026
138.567, 274.002, 39.9931, 1.38026
138.733, 274.177, 39.9898, 1.28987
138.9, 274.494, 39.9926, 1.28987
139.067, 274.614, 39.986, 1.28987
139.233, 274.74, 40.0088, 1.28987
139.4, 274.93, 39.9694, 1.12349
139.567, 275.247, 39.986, 1.12349

139.733, 275.457, 39.9898, 1.12349
139.9, 275.372, 39.9879, 1.12349
140.067, 275.789, 39.9789, 1.20404
140.233, 276.085, 39.9893, 1.20404
140.4, 276.02, 39.9869, 1.20404
140.567, 276.411, 39.994, 1.20404
140.733, 276.532, 39.9969, 1.19126
140.9, 276.637, 39.9917, 1.19126
141.067, 277.014, 39.9917, 1.19126
141.233, 276.989, 39.9888, 1.19126
141.4, 277.209, 39.986, 1.09559
141.567, 277.315, 39.9869, 1.09559
141.733, 277.641, 40.0083, 1.09559
141.9, 277.857, 39.977, 1.09559
142.067, 278.068, 39.9879, 1.10015
142.233, 278.244, 39.9907, 1.10015
142.4, 278.254, 39.9874, 1.10015
142.567, 278.444, 39.9888, 1.10015
142.733, 278.695, 40.0002, 0.994697
142.9, 278.881, 39.9793, 0.994697
143.067, 278.941, 40.0002, 0.994697
143.233, 279.283, 39.9959, 0.994697
143.4, 279.378, 39.9855, 1.1137
143.567, 279.795, 39.9921, 1.1137
143.733, 279.935, 39.9841, 1.1137
143.9, 280.086, 39.9898, 1.1137
144.067, 280.307, 39.9912, 1.27257
144.233, 280.447, 39.9969, 1.27257
144.4, 280.608, 39.985, 1.27257
144.567, 280.834, 40.0007, 1.27257
144.733, 280.809, 39.9865, 0.989422
144.9, 281.06, 39.9921, 0.989422
145.067, 281.17, 39.9803, 0.989422
145.233, 281.301, 39.9808, 0.989422
145.4, 281.577, 39.9978, 0.966132
145.567, 281.677, 39.9798, 0.966132
145.733, 281.818, 40.0007, 0.966132
145.9, 281.983, 39.9903, 0.966132
146.067, 282.194, 39.9893, 0.944227
146.233, 282.45, 40.0002, 0.944227
146.4, 282.581, 39.9917, 0.944227
146.567, 282.757, 39.9803, 0.944227
146.733, 282.902, 39.9874, 1.00225
146.9, 282.812, 40.0059, 1.00225
147.067, 283.083, 39.9893, 1.00225
147.233, 283.243, 39.9921, 1.00225
147.4, 283.474, 39.9907, 0.874221
147.567, 283.64, 39.9888, 0.874221
147.733, 283.766, 39.9893, 0.874221
147.9, 284.027, 39.9926, 0.874221
148.067, 284.037, 39.9926, 0.983432
148.233, 284.288, 39.9912, 0.983432
148.4, 284.478, 39.9955, 0.983432
148.567, 284.529, 39.9912, 0.983432
148.733, 284.724, 39.9997, 0.939757
148.9, 284.875, 39.9831, 0.939757

149.067, 285.452, 39.9589, 0.939757
149.233, 285.593, 39.995, 0.939757
149.4, 285.583, 40.004, 1.43297
149.567, 285.753, 39.985, 1.43297
149.733, 286.05, 39.9974, 1.43297
149.9, 286.311, 39.9808, 1.43297
150.067, 286.321, 39.9912, 1.07977
150.233, 286.682, 39.9884, 1.07977
150.4, 286.848, 40.0026, 1.07977
150.567, 286.923, 39.9865, 1.07977
150.733, 287.3, 39.9955, 1.15286
150.9, 287.224, 39.9884, 1.15286
151.067, 287.601, 39.9959, 1.15286
151.233, 287.812, 39.9974, 1.15286
151.4, 287.872, 39.9921, 1.20029
151.567, 288.183, 39.9874, 1.20029
151.733, 288.294, 39.9955, 1.20029
151.9, 288.615, 39.9959, 1.20029
152.067, 288.57, 39.9907, 1.08205
152.233, 288.981, 39.9917, 1.08205
152.4, 289.102, 39.986, 1.08205
152.567, 289.303, 40.0097, 1.08205
152.733, 289.458, 39.9798, 1.14459
152.9, 289.724, 40.0026, 1.14459
153.067, 289.729, 39.9827, 1.14459
153.233, 290.081, 39.9974, 1.14459
153.4, 290.226, 39.9793, 1.09935
153.567, 290.211, 40.0054, 1.09935
153.733, 290.598, 39.9822, 1.09935
153.9, 290.884, 40.0007, 1.09935
154.067, 291.065, 39.9884, 1.17847
154.233, 291.185, 39.9884, 1.17847
154.4, 291.456, 40.0045, 1.17847
154.567, 291.592, 39.9903, 1.17847
154.733, 291.742, 39.9936, 1.19197
154.9, 291.933, 39.9869, 1.19197
155.067, 292.209, 39.9993, 1.19197
155.233, 292.4, 39.9798, 1.19197
155.4, 292.365, 39.9993, 1.1069
155.567, 292.716, 39.9865, 1.1069
155.733, 292.962, 39.957, 1.1069
155.9, 293.128, 39.9874, 1.1069
156.067, 293.339, 39.9926, 1.22966
156.233, 293.519, 39.9732, 1.22966
156.4, 293.77, 40.0145, 1.22966
156.567, 293.846, 39.9751, 1.22966
156.733, 294.162, 39.9884, 1.14003
156.9, 294.463, 39.985, 1.14003
157.067, 294.538, 39.9888, 1.14003
157.233, 294.87, 39.9926, 1.14003
157.4, 294.875, 39.9903, 1.28165
157.567, 294.95, 40.0016, 1.28165
157.733, 295.312, 39.9879, 1.28165
157.9, 295.593, 39.9931, 1.28165
158.067, 297.059, 38.2042, 1.74317
158.233, 299.749, 23.3652, 1.74317

158.4, 299.749, 13.6292, 1.74317
158.567, 299.749, 10.9559, 1.74317
158.733, 299.749, 9.79212, 5.58351
158.9, 299.749, 9.15372, 5.58351
159.067, 299.749, 8.91813, 5.58351
159.233, 299.749, 8.81363, 5.58351
159.4, 299.749, 8.75805, 0
159.567, 299.749, 8.75995, 0
159.733, 299.749, 8.7438, 0
159.9, 299.749, 8.77135, 0
160.067, 299.749, 8.79273, 0

0.05, 0, -0.0285, 0, 25.0824
0.05, 0, -0.0285, 0, 25.0824
0.05, 0, -0.0285, 0, 25.0824
0.216667, 0, -0.02565, 0, 25.0963
0.383333, 0, -0.026125, 0, 25.1003
0.55, 0, -0.0228, 0, 25.1033
0.716667, 0, -0.0114, 0, 25.1091
0.883333, 0, -0.019475, 0, 25.1173
1.05, 0, -0.05225, 0, 25.1085
1.21667, 0, 0.01805, 0, 25.0728
1.38333, 0, 0.104975, 0, 25.0169
1.55, 0, 0.18145, 0, 24.9977
1.71667, 0, 0.218975, 0, 24.9669
1.88333, 0, 0.3572, 0, 24.9825
2.05, 0, 0.342, 0, 25.0224
2.21667, 0, 0.30685, 0, 25.0316
2.38333, 0, 0.3249, 0, 25.0435
2.55, 0, 0.65835, 0, 25.0441
2.71667, 0, 0.938125, 0, 25.0539
2.88333, 0, 4.15767, 0, 25.0771
3.05, 0, 4.92908, 0, 25.1036
3.21667, 0, 6.3916, 0, 25.1286
3.38333, 0, 6.99058, 0, 25.1622
3.55, 0, 7.74963, 0, 25.1732
3.71667, 0, 9.43588, 0, 25.1726
3.88333, 0, 11.1924, 0, 25.1982
4.05, 0, 12.292, 0, 25.2233
4.21667, 0, 13.6287, 0, 25.2171
4.38333, 3.02204, 13.7788, 0, 25.2138
4.55, 6.31516, 14.2467, 0, 25.2281
4.71667, 9.42254, 14.7492, 12.231, 25.2196
4.88333, 9.84422, 14.9848, 12.231, 25.2007
5.05, 9.98478, 14.9943, 12.231, 25.1772
5.21667, 10.0701, 14.9948, 12.231, 25.1689
5.38333, 10.1755, 14.9967, 2.94875, 25.1799
5.55, 10.3061, 14.991, 2.94875, 25.1717
5.71667, 10.3613, 14.9943, 2.94875, 25.1564
5.88333, 10.4366, 14.9962, 2.94875, 25.1317
6.05, 10.4918, 14.9981, 0.538395, 25.1094
6.21667, 10.6123, 14.9953, 0.538395, 25.1033
6.38333, 10.7177, 14.9953, 0.538395, 25.1021
6.55, 10.7629, 14.9962, 0.538395, 25.1259
6.71667, 10.8884, 14.9934, 0.527853, 25.1402
6.88333, 10.9888, 14.9967, 0.527853, 25.1372
7.05, 11.0289, 14.9915, 0.527853, 25.1473
7.21667, 11.0591, 15.0014, 0.527853, 25.1607
7.38333, 11.1293, 14.9976, 0.381771, 25.164
7.55, 11.2448, 14.9948, 0.381771, 25.1524
7.71667, 11.2799, 14.9991, 0.381771, 25.1445
7.88333, 11.3552, 14.9953, 0.381771, 25.1528
8.05, 11.3452, 14.9976, 0.378006, 25.1753
8.21667, 11.4305, 14.9948, 0.378006, 25.1866
8.38333, 11.6263, 14.9891, 0.378006, 25.1943
8.55, 11.5058, 15.0043, 0.378006, 25.1943
8.71667, 11.6113, 14.9981, 0.335085, 25.1894
8.88333, 11.7267, 14.9943, 0.335085, 25.1845

9.05, 11.8121, 14.9934, 0.335085, 25.1787
9.21667, 11.8773, 14.9943, 0.335085, 25.1863
9.38333, 11.9275, 14.9995, 0.516559, 25.2126
9.55, 11.9827, 14.9948, 0.516559, 25.2385
9.71667, 12.0831, 15.0024, 0.516559, 25.2443
9.88333, 12.1082, 15, 0.516559, 25.2446
10.05, 12.2137, 14.9958, 0.345628, 25.2553
10.2167, 12.1936, 15.001, 0.345628, 25.2721
10.3833, 12.2739, 14.9962, 0.345628, 25.2895
10.55, 12.3944, 14.9939, 0.345628, 25.2965
10.7167, 12.4396, 14.9953, 0.415656, 25.2959
10.8833, 12.545, 14.9939, 0.415656, 25.298
11.05, 12.6002, 14.9962, 0.415656, 25.3005
11.2167, 12.5952, 15.0005, 0.415656, 25.2977
11.3833, 12.5902, 14.9976, 0.28614, 25.288
11.55, 12.6203, 14.9924, 0.28614, 25.284
11.7167, 12.6956, 14.9981, 0.28614, 25.2797
11.8833, 12.791, 14.9991, 0.28614, 25.2751
12.05, 12.8612, 15, 0.368217, 25.2727
12.2167, 12.3643, 15.0371, 0.368217, 25.2672
12.3833, 11.8271, 15.0257, 0.368217, 25.2522
12.55, 11.7217, 15.0171, 0.368217, 25.2352
12.7167, 11.9727, 14.972, -1.50148, 25.2217
12.8833, 12.4094, 14.9782, -1.50148, 25.2187
13.05, 12.6353, 14.9877, -1.50148, 25.222
13.2167, 12.9968, 14.9824, -1.50148, 25.2223
13.3833, 13.4335, 14.9787, 2.09334, 25.2086
13.55, 13.8602, 14.9772, 2.09334, 25.1918
13.7167, 14.4124, 14.9734, 2.09334, 25.1805
13.8833, 14.9646, 14.9772, 2.09334, 25.1622
14.05, 15.4967, 14.9744, 3.0361, 25.1366
14.2167, 16.1242, 14.9734, 3.0361, 25.1344
14.3833, 16.4556, 14.9853, 3.0361, 25.1552
14.55, 16.812, 14.9839, 3.0361, 25.1717
14.7167, 17.1182, 14.9877, 2.58882, 25.1756
14.8833, 17.4094, 14.9858, 2.58882, 25.1744
15.05, 17.6604, 14.9839, 2.58882, 25.1653
15.2167, 17.8411, 14.991, 2.58882, 25.1601
15.3833, 17.9816, 14.9929, 1.38627, 25.1586
15.55, 18.1272, 14.9924, 1.38627, 25.1561
15.7167, 18.2828, 14.9943, 1.38627, 25.1582
15.8833, 18.2929, 15.0057, 1.38627, 25.1659
16.05, 18.3983, 14.9976, 0.612943, 25.1573
16.2167, 18.3883, 14.9995, 0.612943, 25.1409
16.3833, 18.3632, 15.0014, 0.612943, 25.1293
16.55, 18.3431, 15.0005, 0.612943, 25.1259
16.7167, 18.2728, 15.0024, -0.0587348, 25.1293
16.8833, 18.1373, 15.0043, -0.0587348, 25.1161
17.05, 18.0268, 15.0048, -0.0587348, 25.1155
17.2167, 17.9013, 15.0105, -0.0587348, 25.1259
17.3833, 18.0369, 14.9981, -0.436739, 25.1299
17.55, 17.8662, 15.0024, -0.436739, 25.1177
17.7167, 17.7357, 15.0067, -0.436739, 25.0969
17.8833, 17.58, 15.0057, -0.436739, 25.0887
18.05, 17.6604, 15.001, -0.49698, 25.107
18.2167, 17.6855, 15.0014, -0.49698, 25.1134

18.3833, 17.5047, 15.0095, -0.49698, 25.1149
18.55, 17.4847, 15.001, -0.49698, 25.1192
18.7167, 17.3993, 15.0057, -0.300449, 25.1241
18.8833, 17.3843, 14.9972, -0.300449, 25.1137
19.05, 17.4194, 15.0005, -0.300449, 25.0987
19.2167, 17.4244, 14.9972, -0.300449, 25.0844
19.3833, 17.3943, 15.0038, -0.0308705, 25.0813
19.55, 17.329, 15.0076, -0.0308705, 25.0877
19.7167, 17.3893, 14.9981, -0.0308705, 25.0917
19.8833, 17.4545, 14.9967, -0.0308705, 25.0862
20.05, 17.5098, 14.9929, 0.0692736, 25.0777
20.2167, 17.5248, 15.0019, 0.0692736, 25.0832
20.3833, 17.6152, 15, 0.0692736, 25.0966
20.55, 17.6152, 15.0043, 0.0692736, 25.0975
20.7167, 17.6252, 15.0029, 0.17319, 25.0884
20.8833, 17.6955, 14.9953, 0.17319, 25.0789
21.05, 17.7156, 14.9976, 0.17319, 25.0786
21.2167, 17.7106, 15.0033, 0.17319, 25.0795
21.3833, 17.8059, 14.9967, 0.270328, 25.0829
21.55, 17.8712, 14.9939, 0.270328, 25.0801
21.7167, 17.8863, 15.0024, 0.270328, 25.0713
21.8833, 17.9164, 14.9986, 0.270328, 25.067
22.05, 17.9264, 14.9943, 0.201805, 25.0618
22.2167, 18.0871, 14.9606, 0.201805, 25.0566
22.3833, 18.5037, 14.9834, 0.201805, 25.0557
22.55, 18.5389, 14.9962, 0.201805, 25.0575
22.7167, 18.6041, 14.9891, 0.923932, 25.0511
22.8833, 18.6443, 15.0076, 0.923932, 25.0468
23.05, 18.6895, 14.9962, 0.923932, 25.0526
23.2167, 18.6443, 15.0019, 0.923932, 25.0627
23.3833, 18.574, 14.9967, 0.0993954, 25.0749
23.55, 18.7146, 14.9967, 0.0993954, 25.0755
23.7167, 18.7848, 15.001, 0.0993954, 25.063
23.8833, 18.7648, 15.0029, 0.0993954, 25.0572
24.05, 18.7346, 15.0014, 0.249241, 25.0496
24.2167, 18.7597, 14.9991, 0.249241, 25.0398
24.3833, 18.8903, 14.9915, 0.249241, 25.0307
24.55, 18.7748, 15.0024, 0.249241, 25.02
24.7167, 18.7648, 14.9986, -0.0195773, 25.0218
24.8833, 18.8652, 14.9939, -0.0195773, 25.0337
25.05, 18.9154, 14.9972, -0.0195773, 25.0435
25.2167, 18.8752, 14.9986, -0.0195773, 25.042
25.3833, 18.9505, 14.9995, 0.231924, 25.027
25.55, 18.9154, 15.0057, 0.231924, 25.0133
25.7167, 19.076, 14.9953, 0.231924, 24.9962
25.8833, 18.9254, 15.0072, 0.231924, 24.9922
26.05, 18.8401, 15.0019, -0.0361456, 24.9901
26.2167, 18.9605, 14.9962, -0.0361456, 24.9831
26.3833, 18.8852, 14.9901, -0.0361456, 25.0008
26.55, 18.8852, 15.0024, -0.0361456, 25.0163
26.7167, 18.9254, 14.9843, 0.024098, 25.0093
26.8833, 19.0158, 15, 0.024098, 24.9892
27.05, 17.8612, 15.0452, 0.024098, 24.9617
27.2167, 17.5198, 15.0133, 0.024098, 24.9318
27.3833, 17.2788, 15.0053, -2.27105, 24.9031
27.55, 16.9023, 15.019, -2.27105, 24.8836

27.7167, 16.7015, 15.01, -2.27105, 24.8711
27.8833, 16.6162, 15.0062, -2.27105, 24.9077
28.05, 16.5208, 15.0062, -1.27031, 24.9358
28.2167, 16.4054, 15.0024, -1.27031, 24.9208
28.3833, 16.3552, 14.9976, -1.27031, 24.9107
28.55, 16.2347, 15.0138, -1.27031, 24.9058
28.7167, 16.1594, 15.0057, -0.519569, 24.8897
28.8833, 16.0791, 15.0038, -0.519569, 24.8942
29.05, 15.9987, 15.0024, -0.519569, 24.8823
29.2167, 15.9385, 15.0076, -0.519569, 24.901
29.3833, 15.8682, 15.0043, -0.493968, 24.9318
29.55, 15.6975, 15.01, -0.493968, 24.9504
29.7167, 15.4867, 15.0072, -0.493968, 24.9599
29.8833, 15.4917, 14.9991, -0.493968, 24.9669
30.05, 15.3813, 15.0086, -0.703303, 24.9641
30.2167, 15.2859, 15.0043, -0.703303, 24.9495
30.3833, 15.1604, 15.0114, -0.703303, 24.948
30.55, 15.0951, 15.0005, -0.703303, 24.9586
30.7167, 15.0349, 15.0076, -0.451047, 24.9809
30.8833, 14.9496, 15.0024, -0.451047, 25.0053
31.05, 14.8692, 15.0014, -0.451047, 25.0124
31.2167, 14.7839, 15.0043, -0.451047, 25.0011
31.3833, 14.7488, 14.9976, -0.487191, 25.0008
31.55, 14.6735, 14.9972, -0.487191, 25.0078
31.7167, 14.6484, 14.9986, -0.487191, 24.9861
31.8833, 14.6283, 15.0029, -0.487191, 24.9657
32.05, 14.6584, 15, -0.177708, 24.9815
32.2167, 14.548, 15.0057, -0.177708, 25.0008
32.3833, 14.4927, 15.0038, -0.177708, 24.9928
32.55, 14.5078, 15.0019, -0.177708, 24.9831
32.7167, 14.4476, 15.0024, -0.250749, 24.994
32.8833, 14.4325, 14.9981, -0.250749, 25.0096
33.05, 14.4174, 15.0014, -0.250749, 25.0142
33.2167, 14.3572, 15.0014, -0.250749, 25.0096
33.3833, 14.3873, 15.0033, -0.0911141, 25.0002
33.55, 14.5379, 14.9943, -0.0911141, 24.9919
33.7167, 14.4576, 15.0057, -0.0911141, 24.976
33.8833, 14.3472, 15.0053, -0.0911141, 24.966
34.05, 14.3823, 14.9976, -0.121233, 24.9904
34.2167, 14.3622, 15.0014, -0.121233, 25.0227
34.3833, 14.3321, 15.0005, -0.121233, 25.027
34.55, 14.3672, 14.9972, -0.121233, 25.0053
34.7167, 14.3723, 14.9958, 0.051205, 24.9892
34.8833, 14.4576, 14.9967, 0.051205, 24.9794
35.05, 14.4877, 15.0048, 0.051205, 24.9715
35.2167, 14.548, 14.9953, 0.051205, 24.9635
35.3833, 14.6584, 14.9934, 0.363699, 24.9434
35.55, 14.6986, 14.9924, 0.363699, 24.9571
35.7167, 14.7789, 14.9948, 0.363699, 24.9489
35.8833, 14.819, 14.9986, 0.363699, 24.9583
36.05, 14.8642, 14.9958, 0.332826, 24.9953
36.2167, 14.8793, 15, 0.332826, 25.0139
36.3833, 14.9696, 14.9962, 0.332826, 25.0298
36.55, 14.9094, 15.0043, 0.332826, 25.0313
36.7167, 15.0249, 14.9972, 0.181472, 25.006
36.8833, 15.0449, 15.0014, 0.181472, 24.9818

37.05, 15.0249, 14.9958, 0.181472, 24.998
37.2167, 15.0851, 14.9986, 0.181472, 25.006
37.3833, 15.1704, 14.9986, 0.280869, 24.9974
37.55, 15.1453, 15.0043, 0.280869, 25.0075
37.7167, 15.1805, 15.001, 0.280869, 25.005
37.8833, 15.2558, 14.9995, 0.280869, 24.9849
38.05, 15.1554, 15.0033, 0.0662645, 24.9852
38.2167, 15.2106, 14.9976, 0.0662645, 24.9931
38.3833, 15.2909, 14.9972, 0.0662645, 24.9922
38.55, 15.3311, 14.9953, 0.0662645, 25.0029
38.7167, 15.301, 15, 0.133281, 25.0233
38.8833, 15.3763, 14.9943, 0.133281, 25.049
39.05, 15.4516, 14.9972, 0.133281, 25.063
39.2167, 15.3612, 15.0043, 0.133281, 25.0642
39.3833, 15.3662, 15.0005, 0.136293, 25.07
39.55, 15.4064, 14.992, 0.136293, 25.0728
39.7167, 15.5319, 14.9958, 0.136293, 25.0777
39.8833, 15.5168, 14.9962, 0.136293, 25.0823
40.05, 15.5871, 14.9991, 0.307225, 25.0877
40.2167, 15.6072, 14.9943, 0.307225, 25.0899
40.3833, 15.6975, 14.9929, 0.307225, 25.089
40.55, 15.6624, 14.9948, 0.307225, 25.0807
40.7167, 15.6925, 14.9962, 0.182978, 25.0813
40.8833, 15.7528, 15.0005, 0.182978, 25.1018
41.05, 15.7277, 14.9934, 0.182978, 25.1201
41.2167, 15.7829, 15.0014, 0.182978, 25.1207
41.3833, 15.8582, 14.9886, 0.182225, 25.1189
41.55, 16.1594, 14.9444, 0.182225, 25.1259
41.7167, 16.5208, 14.9787, 0.182225, 25.1271
41.8833, 16.6965, 15.0053, 0.182225, 25.121
42.05, 16.6865, 15.0024, 1.20932, 25.1112
42.2167, 16.7568, 14.9986, 1.20932, 25.0951
42.3833, 16.7919, 15.0043, 1.20932, 25.0823
42.55, 16.5861, 15.0309, 1.20932, 25.0758
42.7167, 16.6564, 14.9948, -0.0466844, 25.0859
42.8833, 16.7467, 14.9958, -0.0466844, 25.1067
43.05, 16.8019, 14.9972, -0.0466844, 25.1167
43.2167, 16.8823, 14.9905, -0.0466844, 25.1082
43.3833, 16.8471, 15.0053, 0.384028, 25.0902
43.55, 16.9325, 14.9953, 0.384028, 25.0807
43.7167, 16.9375, 14.9991, 0.384028, 25.0905
43.8833, 17.0128, 14.9867, 0.384028, 25.0963
44.05, 16.9977, 15.0005, 0.193521, 25.1009
44.2167, 16.9676, 14.9981, 0.193521, 25.1033
44.3833, 16.9977, 14.9948, 0.193521, 25.1
44.55, 16.9977, 15.0062, 0.193521, 25.0865
44.7167, 16.9827, 15.0005, 0.000754371, 25.0801
44.8833, 17.1182, 14.9948, 0.000754371, 25.0847
45.05, 17.1784, 14.9905, 0.000754371, 25.0887
45.2167, 17.1584, 15.0024, 0.000754371, 25.0853
45.3833, 17.2286, 14.9967, 0.271079, 25.0847
45.55, 17.2337, 14.9995, 0.271079, 25.0838
45.7167, 17.2989, 14.9967, 0.271079, 25.0819
45.8833, 17.3441, 14.9943, 0.271079, 25.0844
46.05, 17.3592, 14.9972, 0.26581, 25.0829
46.2167, 17.324, 15.0029, 0.26581, 25.0819

46.3833, 17.3341, 14.9934, 0.26581, 25.0835
46.55, 17.3441, 15.0105, 0.26581, 25.099
46.7167, 17.3893, 14.9929, 0.00903569, 25.0951
46.8833, 17.3792, 15.0014, 0.00903569, 25.0823
47.05, 17.4395, 15.0033, 0.00903569, 25.0713
47.2167, 16.4505, 15.0594, 0.00903569, 25.0639
47.3833, 15.9485, 15.0181, -1.75299, 25.074
47.55, 15.6373, 15.0119, -1.75299, 25.0859
47.7167, 15.4716, 14.9991, -1.75299, 25.081
47.8833, 15.3311, 15.0062, -1.75299, 25.0539
48.05, 15.2909, 14.9991, -1.33281, 25.0377
48.2167, 15.1905, 15.0038, -1.33281, 25.0127
48.3833, 15.1955, 15.0043, -1.33281, 24.9995
48.55, 15.1554, 14.9981, -1.33281, 24.994
48.7167, 15.1403, 14.9986, -0.198039, 24.995
48.8833, 15.0951, 15.0062, -0.198039, 24.9928
49.05, 15.05, 15.0062, -0.198039, 24.9635
49.2167, 14.9345, 15.0105, -0.198039, 24.9525
49.3833, 14.8542, 15.0072, -0.402102, 24.937
49.55, 14.7337, 15.0076, -0.402102, 24.9315
49.7167, 14.6383, 15.0038, -0.402102, 24.9416
49.8833, 14.4576, 15.0086, -0.402102, 24.9477
50.05, 14.4325, 15.0024, -0.646073, 24.9351
50.2167, 14.297, 15.0033, -0.646073, 24.9361
50.3833, 14.1915, 14.9958, -0.646073, 24.9663
50.55, 14.1313, 15.0091, -0.646073, 24.9791
50.7167, 14.0359, 14.9972, -0.608424, 24.9355
50.8833, 13.9405, 15.0057, -0.608424, 24.9031
51.05, 13.8552, 15.0105, -0.608424, 24.9174
51.2167, 13.8351, 14.9986, -0.608424, 24.9547
51.3833, 13.7899, 15.0057, -0.324543, 24.9788
51.55, 13.8452, 15.0067, -0.324543, 24.9998
51.7167, 13.795, 14.9915, -0.324543, 25.0121
51.8833, 13.7548, 15.0057, -0.324543, 25.0121
52.05, 13.81, 14.9967, -0.103915, 25.005
52.2167, 13.7799, 15.0038, -0.103915, 25.0063
52.3833, 13.8, 15.0038, -0.103915, 24.995
52.55, 13.7849, 14.9981, -0.103915, 24.9944
52.7167, 13.9154, 14.9943, 0.122739, 25.0093
52.8833, 13.9054, 15.0114, 0.122739, 25.0127
53.05, 14.066, 14.9896, 0.122739, 25.0148
53.2167, 14.1865, 15.0014, 0.122739, 25.0258
53.3833, 14.1966, 14.9981, 0.476649, 25.0301
53.55, 14.2518, 14.9953, 0.476649, 25.0368
53.7167, 14.312, 15.0048, 0.476649, 25.045
53.8833, 14.3271, 14.9972, 0.476649, 25.0435
54.05, 14.3974, 14.9867, 0.303458, 25.0154
54.2167, 14.297, 15.0147, 0.303458, 24.9986
54.3833, 14.4275, 14.991, 0.303458, 25.0206
54.55, 14.5078, 15.0029, 0.303458, 25.0264
54.7167, 14.5429, 15.001, 0.271834, 24.9937
54.8833, 14.558, 14.9981, 0.271834, 24.9944
55.05, 14.6735, 14.9962, 0.271834, 25.0087
55.2167, 14.6684, 15, 0.271834, 25.0224
55.3833, 14.6785, 15.0048, 0.21837, 25.023
55.55, 14.7136, 14.9915, 0.21837, 25.0246

55.7167, 14.7186, 14.9943, 0.21837, 25.0264
55.8833, 14.8542, 14.9939, 0.21837, 25.0206
56.05, 14.9094, 15.0014, 0.256774, 25.0209
56.2167, 14.8642, 15.0014, 0.256774, 25.0374
56.3833, 14.9245, 14.9929, 0.256774, 25.0243
56.55, 14.9797, 15.0019, 0.256774, 25.0172
56.7167, 14.9998, 15.0029, 0.142316, 25.0224
56.8833, 15.0098, 15, 0.142316, 25.0157
57.05, 15.0399, 14.9991, 0.142316, 25.0075
57.2167, 15.1353, 14.9939, 0.142316, 25.0169
57.3833, 15.1704, 15, 0.31099, 25.02
57.55, 15.1353, 15.0029, 0.31099, 25.0194
57.7167, 15.0198, 14.9972, 0.31099, 25.0191
57.8833, 15.1353, 14.9929, 0.31099, 25.0035
58.05, 15.2407, 14.9976, 0.0338852, 25.0041
58.2167, 15.2508, 14.9991, 0.0338852, 24.9986
58.3833, 15.2508, 15.0029, 0.0338852, 24.9947
58.55, 15.306, 14.9972, 0.0338852, 24.998
58.7167, 15.321, 14.9972, 0.186743, 25.0063
58.8833, 15.4465, 14.9967, 0.186743, 25.0111
59.05, 15.4365, 14.9972, 0.186743, 24.9974
59.2167, 15.4666, 15.0024, 0.186743, 24.9721
59.3833, 15.5369, 14.9948, 0.283128, 24.9678
59.55, 15.4967, 15.0029, 0.283128, 24.9611
59.7167, 15.6574, 14.9953, 0.283128, 24.9669
59.8833, 15.6473, 15.0033, 0.283128, 24.9696
60.05, 15.7327, 15.0043, 0.285387, 24.9486
60.2167, 15.6072, 15.0181, 0.285387, 24.9504
60.3833, 15.6775, 14.9981, 0.285387, 24.9608
60.55, 15.6975, 14.9858, 0.285387, 24.9611
60.7167, 15.8431, 15.0138, 0.139304, 24.9684
60.8833, 15.7678, 14.9995, 0.139304, 24.9626
61.05, 15.823, 15.0091, 0.139304, 24.9373
61.2167, 15.9285, 14.9934, 0.139304, 24.9385
61.3833, 16.0038, 14.9995, 0.266561, 24.9684
61.55, 15.9736, 15.0014, 0.266561, 24.9647
61.7167, 16.0138, 14.9915, 0.266561, 24.9657
61.8833, 16.0489, 14.9986, 0.266561, 24.9831
62.05, 16.1594, 14.9962, 0.155873, 24.9733
62.2167, 16.0289, 15.0076, 0.155873, 24.9675
62.3833, 16.0941, 14.9948, 0.155873, 24.969
62.55, 16.2447, 14.9976, 0.155873, 24.9141
62.7167, 16.1845, 15.0019, 0.185237, 24.8823
62.8833, 16.3351, 14.9953, 0.185237, 24.9293
63.05, 16.2196, 15.0081, 0.185237, 24.951
63.2167, 14.2668, 15.1952, 0.185237, 24.9287
63.3833, 13.815, 15.0053, -3.5007, 24.9342
63.55, 13.9154, 14.9976, -3.5007, 24.9431
63.7167, 14.1313, 15.0057, -3.5007, 24.9617
63.8833, 14.297, 14.9948, -3.5007, 24.9632
64.05, 14.4727, 14.9915, 0.850136, 24.9483
64.2167, 14.3572, 15.0057, 0.850136, 24.9416
64.3833, 14.5178, 14.9967, 0.850136, 24.9574
64.55, 14.5831, 14.9929, 0.850136, 24.9757
64.7167, 14.6132, 15.001, 0.253009, 24.9925
64.8833, 14.6082, 15.0238, 0.253009, 25.0127

65.05, 13.3231, 15.057, 0.253009, 25.0093
65.2167, 12.9717, 15.0219, 0.253009, 24.9806
65.3833, 12.5199, 15.0195, -2.77029, 24.9721
65.55, 12.0982, 14.9877, -2.77029, 24.9699
65.7167, 11.9777, 15.0143, -2.77029, 24.951
65.8833, 11.7066, 15.01, -2.77029, 24.9141
66.05, 11.4958, 15.01, -1.76654, 24.9251
66.2167, 11.2498, 15.0138, -1.76654, 24.9211
66.3833, 11.0139, 15.0105, -1.76654, 24.9388
66.55, 10.803, 15.0105, -1.76654, 24.9678
66.7167, 10.5922, 15.0152, -1.30947, 24.987
66.8833, 10.3663, 15.0166, -1.30947, 24.9852
67.05, 10.4065, 14.9587, -1.30947, 24.9568
67.2167, 9.9145, 15.0318, -1.30947, 24.9336
67.3833, 9.64844, 15.0095, -1.3923, 24.9382
67.55, 9.44262, 15.0048, -1.3923, 24.9187
67.7167, 9.22174, 15.0086, -1.3923, 24.9028
67.8833, 9.03098, 15.0038, -1.3923, 24.9129
68.05, 8.87536, 15.0076, -1.2545, 24.9306
68.2167, 8.69464, 15.0062, -1.2545, 24.9248
68.3833, 8.5591, 15.0048, -1.2545, 24.9062
68.55, 8.34826, 15.0095, -1.2545, 24.9483
68.7167, 8.16252, 15.0114, -1.07077, 24.9889
68.8833, 7.97176, 15.0076, -1.07077, 25.0224
69.05, 7.89646, 15.0062, -1.07077, 25.0475
69.2167, 7.75088, 15.0043, -1.07077, 25.063
69.3833, 7.63542, 15.0105, -0.795921, 25.0734
69.55, 7.48984, 15.0076, -0.795921, 25.0737
69.7167, 7.3543, 15.0038, -0.795921, 25.0725
69.8833, 7.26394, 15.0062, -0.795921, 25.0746
70.05, 7.10832, 15.0033, -0.792156, 25.041
70.2167, 7.04808, 15.001, -0.792156, 25.0182
70.3833, 6.90752, 15.0038, -0.792156, 25.0133
70.55, 6.80712, 15.001, -0.792156, 24.9944
70.7167, 6.76696, 15.0043, -0.552702, 24.9705
70.8833, 6.61134, 15.0024, -0.552702, 24.9739
71.05, 6.57118, 15.0029, -0.552702, 24.9953
71.2167, 6.4005, 15.0033, -0.552702, 25.0182
71.3833, 6.33022, 15.0014, -0.644568, 25.0221
71.55, 6.26998, 15.0095, -0.644568, 25.0136
71.7167, 6.1495, 15.0024, -0.644568, 24.9998
71.8833, 6.0742, 14.9995, -0.644568, 25.0151
72.05, 5.96878, 15.0019, -0.491709, 25.0401
72.2167, 5.8734, 15.0057, -0.491709, 25.0517
72.3833, 5.75794, 15.0029, -0.491709, 25.07
72.55, 5.66256, 15.0114, -0.491709, 25.0887
72.7167, 5.59228, 14.9967, -0.634779, 25.0932
72.8833, 5.51698, 15.0072, -0.634779, 25.0758
73.05, 5.4216, 15.0014, -0.634779, 25.0642
73.2167, 5.39148, 15.0048, -0.634779, 25.0685
73.3833, 5.30112, 15.0095, -0.387795, 25.0755
73.55, 5.1957, 15.0067, -0.387795, 25.0761
73.7167, 5.16558, 15.0019, -0.387795, 25.0731
73.8833, 5.0451, 15.0043, -0.387795, 25.0713
74.05, 5.0451, 15.0185, -0.482673, 25.0649
74.2167, 4.98988, 15.0019, -0.482673, 25.0603

74.3833, 4.90956, 15, -0.482673, 25.0478
74.55, 4.87442, 15.0033, -0.482673, 25.0255
74.7167, 4.72382, 15.0076, -0.317766, 25.0401
74.8833, 4.7439, 15.0033, -0.317766, 25.0618
75.05, 4.68868, 15.0043, -0.317766, 25.0737
75.2167, 4.58326, 15.01, -0.317766, 25.0801
75.3833, 4.55314, 15.0029, -0.324543, 25.0801
75.55, 4.93968, 14.9877, -0.324543, 25.0844
75.7167, 4.50294, 15.0233, -0.324543, 25.0774
75.8833, 4.46278, 15.0019, -0.324543, 25.0682
76.05, 4.45274, 15.0014, -0.2259, 25.074
76.2167, 4.46278, 14.9972, -0.2259, 25.0691
76.3833, 4.33728, 15.0043, -0.2259, 25.0652
76.55, 4.38748, 14.9962, -0.2259, 25.0752
76.7167, 4.48286, 15.0014, 0.0489447, 25.085
76.8833, 4.4929, 14.9981, 0.0489447, 25.0554
77.05, 4.2921, 15.0124, 0.0489447, 25.009
77.2167, 4.21178, 15.01, 0.0489447, 25.0002
77.3833, 4.267, 15.0005, -0.332073, 24.9995
77.55, 4.18668, 15.0043, -0.332073, 24.9937
77.7167, 4.23688, 14.9939, -0.332073, 24.9879
77.8833, 4.20676, 15.0048, -0.332073, 25.0359
78.05, 4.18166, 15.0014, -0.111444, 25.0676
78.2167, 4.17162, 14.9934, -0.111444, 25.0862
78.3833, 4.02102, 15.0105, -0.111444, 25.0859
78.55, 4.23688, 14.9853, -0.111444, 25.0481
78.7167, 4.29712, 14.9995, 0.144576, 25.0069
78.8833, 4.30716, 15.0072, 0.144576, 24.9934
79.05, 4.14652, 15.0076, 0.144576, 24.998
79.2167, 4.12644, 14.9986, 0.144576, 24.9974
79.3833, 4.11138, 14.9482, -0.149847, 25.0005
79.55, 3.98588, 15.0124, -0.149847, 25.0163
79.7167, 4.08126, 14.9867, -0.149847, 25.0166
79.8833, 4.0662, 14.9853, -0.149847, 24.9818
80.05, 4.0662, 15.0019, -0.124245, 24.9861
80.2167, 4.08126, 15.0024, -0.124245, 24.9983
80.3833, 4.17162, 14.9953, -0.124245, 24.9898
80.55, 4.15656, 14.9981, -0.124245, 24.9818
80.7167, 4.2419, 14.9981, 0.119727, 24.994
80.8833, 4.23186, 15.0005, 0.119727, 24.9974
81.05, 4.20174, 15.0053, 0.119727, 25.0069
81.2167, 4.3172, 14.9967, 0.119727, 25.0331
81.3833, 4.1917, 15.0057, 0.062499, 25.0295
81.55, 4.12644, 15.0048, 0.062499, 25.0264
81.7167, 4.20174, 14.9948, 0.062499, 25.0346
81.8833, 4.25696, 15, 0.062499, 25.0343
82.05, 4.23688, 14.9962, 0.040662, 25.0221
82.2167, 4.33728, 14.9958, 0.040662, 25.0099
82.3833, 4.46278, 15.0091, 0.040662, 25.0114
82.55, 4.57824, 15.001, 0.040662, 25.0124
82.7167, 4.57824, 15.0014, 0.497733, 25.0221
82.8833, 4.56318, 14.9981, 0.497733, 25.0124
83.05, 4.42262, 15.0062, 0.497733, 25.0029
83.2167, 4.54812, 14.9962, 0.497733, 25.013
83.3833, 4.56318, 14.9991, -0.0542162, 25.0041
83.55, 4.60334, 14.9986, -0.0542162, 24.9956

83.7167, 4.58828, 15.0043, -0.0542162, 24.9742
83.8833, 4.62342, 14.9972, -0.0542162, 24.9547
84.05, 4.57824, 14.9981, 0.0677698, 24.959
84.2167, 4.68366, 14.9953, 0.0677698, 24.9715
84.3833, 4.74892, 14.9929, 0.0677698, 24.9852
84.55, 4.70876, 15, 0.0677698, 24.9986
84.7167, 4.75394, 14.9962, 0.17319, 24.9913
84.8833, 4.80916, 15.0014, 0.17319, 24.9522
85.05, 4.8443, 14.9986, 0.17319, 24.9275
85.2167, 4.68366, 15.0076, 0.17319, 24.9199
85.3833, 4.8192, 14.9943, 0.110691, 24.9211
85.55, 4.78908, 14.9986, 0.110691, 24.9257
85.7167, 4.86438, 14.9948, 0.110691, 24.9525
85.8833, 4.87442, 15.0005, 0.110691, 24.9794
86.05, 4.87442, 15.0204, 0.182226, 24.9934
86.2167, 3.60436, 15.0684, 0.182226, 24.9944
86.3833, 3.39352, 15.0072, 0.182226, 25.0002
86.55, 3.2881, 15.0057, 0.182226, 25.0002
86.7167, 3.2881, 14.9991, -2.43821, 25.0124
86.8833, 3.43368, 14.9948, -2.43821, 25.0282
87.05, 3.8403, 14.9777, -2.43821, 25.0377
87.2167, 4.28708, 14.9791, -2.43821, 25.0511
87.3833, 4.6937, 14.9805, 1.84485, 25.0554
87.55, 5.16056, 14.9805, 1.84485, 25.0575
87.7167, 5.64248, 14.9715, 1.84485, 25.0679
87.8833, 6.23484, 14.9677, 1.84485, 25.0725
88.05, 6.88242, 14.973, 3.11817, 25.0826
88.2167, 7.43462, 14.9782, 3.11817, 25.0722
88.3833, 8.1575, 14.9663, 3.11817, 25.0658
88.55, 8.82516, 14.9677, 3.11817, 25.0719
88.7167, 9.45768, 14.9687, 3.88774, 25.0884
88.8833, 10.1304, 14.9687, 3.88774, 25.1051
89.05, 10.793, 14.9687, 3.88774, 25.1195
89.2167, 11.3854, 14.973, 3.88774, 25.121
89.3833, 12.0731, 14.9568, 3.93367, 25.1241
89.55, 12.5952, 14.9801, 3.93367, 25.1189
89.7167, 13.0821, 14.9805, 3.93367, 25.1103
89.8833, 13.5992, 14.9734, 3.93367, 25.1051
90.05, 14.0108, 14.9891, 3.0504, 25.1088
90.2167, 14.4827, 14.9815, 3.0504, 25.1103
90.3833, 14.8241, 14.981, 3.0504, 25.0957
90.55, 15.2959, 14.982, 3.0504, 25.1103
90.7167, 15.6624, 14.9829, 2.48189, 25.1137
90.8833, 15.9887, 14.981, 2.48189, 25.1155
91.05, 16.3501, 14.9848, 2.48189, 25.1143
91.2167, 16.6664, 14.9872, 2.48189, 25.1204
91.3833, 16.9726, 14.9877, 2.00373, 25.1268
91.55, 17.2086, 14.9877, 2.00373, 25.1323
91.7167, 17.4796, 14.9782, 2.00373, 25.1305
91.8833, 17.6905, 14.9896, 2.00373, 25.1289
92.05, 17.9515, 14.9882, 1.52407, 25.1286
92.2167, 18.1021, 14.9953, 1.52407, 25.1198
92.3833, 18.4937, 14.9834, 1.52407, 25.1039
92.55, 18.6091, 14.9958, 1.52407, 25.0795
92.7167, 18.6794, 14.9967, 1.29365, 25.0588
92.8833, 18.8049, 14.9924, 1.29365, 25.0377

93.05, 18.9656, 14.9948, 1.29365, 25.0307
93.2167, 19.0158, 14.9986, 1.29365, 25.0334
93.3833, 19.2266, 14.9967, 0.676193, 25.0356
93.55, 19.2868, 14.9976, 0.676193, 25.0368
93.7167, 19.4123, 14.9953, 0.676193, 25.0389
93.8833, 19.4625, 14.9905, 0.676193, 25.0371
94.05, 19.5228, 14.9995, 0.559478, 25.0349
94.2167, 19.6382, 14.9981, 0.559478, 25.0243
94.3833, 19.6332, 15.0019, 0.559478, 25.0053
94.55, 19.6533, 14.9986, 0.559478, 24.9861
94.7167, 19.6684, 15.0029, 0.222889, 24.9602
94.8833, 19.6734, 14.9962, 0.222889, 24.9486
95.05, 19.6834, 14.9986, 0.222889, 24.9666
95.2167, 19.6081, 15.0024, 0.222889, 24.976
95.3833, 19.6433, 14.9943, -0.0753002, 24.9568
95.55, 19.7236, 14.9939, -0.0753002, 24.958
95.7167, 19.6884, 14.9958, -0.0753002, 24.9779
95.8833, 19.6533, 14.9986, -0.0753002, 24.9883
96.05, 19.5479, 15.0067, -0.00677817, 24.9916
96.2167, 19.5931, 14.9986, -0.00677817, 24.9916
96.3833, 19.578, 14.9995, -0.00677817, 24.9715
96.55, 19.5529, 15, -0.00677817, 24.9333
96.7167, 19.568, 14.9995, -0.0602379, 24.9242
96.8833, 19.5077, 15.0053, -0.0602379, 24.9358
97.05, 19.4525, 14.9995, -0.0602379, 24.9507
97.2167, 19.337, 15.0019, -0.0602379, 24.9709
97.3833, 19.3872, 15.0019, -0.296683, 24.9702
97.55, 19.3621, 15.0043, -0.296683, 24.9712
97.7167, 19.322, 15, -0.296683, 24.9849
97.8833, 19.2266, 15.0033, -0.296683, 24.9876
98.05, 19.337, 15.0005, -0.117467, 24.9886
98.2167, 19.2919, 15.0038, -0.117467, 24.9892
98.3833, 19.2768, 15.0038, -0.117467, 24.9889
98.55, 19.2617, 14.9953, -0.117467, 24.9797
98.7167, 19.322, 15.0043, 0, 24.987
98.8833, 19.2467, 14.9981, 0, 25.0075
99.05, 19.2115, 15.0133, 0, 25.0182
99.2167, 19.3521, 14.9872, 0, 25.0319
99.3833, 19.3521, 14.9862, 0.0338852, 25.0362
99.55, 19.6483, 14.9715, 0.0338852, 25.0407
99.7167, 19.824, 14.9877, 0.0338852, 25.0688
99.8833, 19.9445, 14.9848, 0.0338852, 25.0923
100.05, 19.9947, 15.0067, 0.944261, 25.1088
100.217, 20.0549, 14.9901, 0.944261, 25.118
100.383, 20.1352, 14.9934, 0.944261, 25.1128
100.55, 20.075, 15.0067, 0.944261, 25.0996
100.717, 20.0198, 14.9967, 0.0963835, 25.0868
100.883, 20.1804, 14.991, 0.0963835, 25.0771
101.05, 20.2206, 14.9986, 0.0963835, 25.085
101.217, 20.0951, 15.0067, 0.0963835, 25.0948
101.383, 20.075, 15.0014, 0.103162, 25.096
101.55, 20.1503, 14.992, 0.103162, 25.0874
101.717, 20.2155, 14.9929, 0.103162, 25.089
101.883, 20.1955, 14.9991, 0.103162, 25.0911
102.05, 20.1453, 15.0057, 0.0971379, 25.078
102.217, 20.2105, 14.9958, 0.0971379, 25.063

102.383, 20.2708, 14.9943, 0.0971379, 25.0658
102.55, 20.2356, 15.001, 0.0971379, 25.06
102.717, 20.2406, 15.0053, 0.156624, 25.0459
102.883, 20.2607, 14.9934, 0.156624, 25.0273
103.05, 20.1402, 15.0033, 0.156624, 25.024
103.217, 20.1704, 15.0033, 0.156624, 25.0276
103.383, 20.2908, 14.9905, -0.064007, 25.0203
103.55, 20.2708, 15.0019, -0.064007, 25.0063
103.717, 20.2808, 14.9976, -0.064007, 25.0233
103.883, 20.4364, 14.992, -0.064007, 25.042
104.05, 20.3661, 15.0095, 0.382525, 25.0542
104.217, 20.3059, 14.9991, 0.382525, 25.0548
104.383, 20.3059, 15, 0.382525, 25.034
104.55, 20.2708, 15.0062, 0.382525, 25.016
104.717, 20.2858, 15.0005, -0.291411, 25.0249
104.883, 20.1653, 14.9796, -0.291411, 25.023
105.05, 20.341, 14.9976, -0.291411, 25.0005
105.217, 20.336, 15.0043, -0.291411, 24.9895
105.383, 20.3611, 14.9981, 0.106174, 25.0047
105.55, 20.3912, 15, 0.106174, 25.0093
105.717, 20.5268, 14.992, 0.106174, 25.0145
105.883, 20.4665, 14.9995, 0.106174, 25.0154
106.05, 20.4565, 15.001, 0.218368, 24.9745
106.217, 20.4967, 14.9943, 0.218368, 24.9364
106.383, 20.5318, 15.019, 0.218368, 24.9501
106.55, 20.4967, 14.9991, 0.218368, 24.9791
106.717, 20.587, 14.9843, 0.0436753, 24.9886
106.883, 20.5619, 14.9829, 0.0436753, 24.9773
107.05, 19.4123, 15.0789, 0.0436753, 24.9623
107.217, 19.3019, 15.038, 0.0436753, 24.9568
107.383, 19.1714, 14.9991, -1.90133, 24.9739
107.55, 19.076, 15.0053, -1.90133, 24.9675
107.717, 19.0258, 15.0062, -1.90133, 24.9571
107.883, 19.0107, 15.0048, -1.90133, 24.9736
108.05, 19.0559, 14.9939, -0.361439, 24.958
108.217, 18.9254, 15.0053, -0.361439, 24.9412
108.383, 18.9605, 14.9976, -0.361439, 24.9281
108.55, 19.0258, 15.0053, -0.361439, 24.9229
108.717, 19.0459, 14.9995, 0.00602379, 24.9562
108.883, 19.1764, 14.9891, 0.00602379, 24.9672
109.05, 19.0961, 15.0072, 0.00602379, 24.9538
109.217, 19.1714, 14.9943, 0.00602379, 24.9257
109.383, 19.2166, 14.9981, 0.283881, 24.9123
109.55, 19.2517, 14.9962, 0.283881, 24.9412
109.717, 19.2316, 15.0033, 0.283881, 24.9501
109.883, 19.2517, 14.9976, 0.283881, 24.9275
110.05, 19.337, 14.9976, 0.14081, 24.9217
110.217, 19.3722, 14.9967, 0.14081, 24.8936
110.383, 19.3973, 14.9991, 0.14081, 24.8854
110.55, 19.4575, 15.0014, 0.14081, 24.9367
110.717, 19.4625, 15.001, 0.286141, 24.9821
110.883, 19.4073, 15.0086, 0.286141, 25.005
111.05, 19.5328, 14.9986, 0.286141, 24.9831
111.217, 19.578, 14.9976, 0.286141, 24.9409
111.383, 19.5629, 15.0029, 0.0722855, 24.9437
111.55, 19.573, 15, 0.0722855, 24.9736

111.717, 19.6131, 14.9986, 0.0722855, 24.9925
111.883, 19.6583, 15.0005, 0.0722855, 25.0056
112.05, 19.6382, 15.0029, 0.118976, 25.0237
112.217, 19.5629, 14.9934, 0.118976, 25.0197
112.383, 19.6232, 14.9796, 0.118976, 25.0203
112.55, 19.6182, 15.0014, 0.118976, 25.0517
112.717, 19.7186, 14.9929, 0.0496963, 25.0569
112.883, 19.7035, 15.0019, 0.0496963, 25.0429
113.05, 19.7888, 14.9995, 0.0496963, 25.056
113.217, 19.7587, 15.0024, 0.0496963, 25.0771
113.383, 19.7487, 14.9972, 0.153612, 25.0911
113.55, 19.8591, 14.9948, 0.153612, 25.1122
113.717, 19.8491, 15.0038, 0.153612, 25.1192
113.883, 19.834, 15.0024, 0.153612, 25.1134
114.05, 19.9394, 15.0038, 0.239454, 25.1137
114.217, 19.8089, 15.0043, 0.239454, 25.1195
114.383, 19.9294, 14.9939, 0.239454, 25.1222
114.55, 20.07, 14.9934, 0.239454, 25.0993
114.717, 19.9947, 15.0067, 0.0858419, 25.0761
114.883, 19.8039, 15.0129, 0.0858419, 25.0621
115.05, 19.839, 14.9981, 0.0858419, 25.0575
115.217, 19.7939, 15.011, 0.0858419, 25.0478
115.383, 19.824, 15.0057, -0.295929, 25.0505
115.55, 19.9645, 14.9995, -0.295929, 25.0688
115.717, 19.9445, 15.0081, -0.295929, 25.0725
115.883, 19.9796, 15.0076, -0.295929, 25.0731
116.05, 19.9746, 14.9967, 0.365205, 25.0627
116.217, 20.0198, 14.9953, 0.365205, 25.0362
116.383, 20.1453, 14.9986, 0.365205, 25.0325
116.55, 20.1352, 15.0014, 0.365205, 25.0353
116.717, 20.1503, 15.0019, 0.154367, 25.0069
116.883, 20.2055, 15, 0.154367, 24.9821
117.05, 20.1553, 15.0043, 0.154367, 24.966
117.217, 20.2206, 14.9976, 0.154367, 24.9599
117.383, 20.2306, 14.9991, 0.193519, 24.9614
117.55, 20.1704, 15.01, 0.193519, 24.9763
117.717, 20.2557, 14.9953, 0.193519, 24.9977
117.883, 20.1101, 15.0053, 0.193519, 25.0121
118.05, 20.1302, 14.9976, -0.178459, 25.0014
118.217, 20.1503, 15.0024, -0.178459, 24.9812
118.383, 20.2908, 14.9995, -0.178459, 24.9913
118.55, 20.2457, 14.9995, -0.178459, 25.0035
118.717, 20.2657, 15.0048, 0.211593, 25.0243
118.883, 20.2557, 14.9976, 0.211593, 25.0331
119.05, 20.331, 14.9991, 0.211593, 25.0227
119.217, 20.4214, 14.9929, 0.211593, 25.031
119.383, 20.3159, 15.0062, 0.112197, 25.0383
119.55, 20.2858, 14.9972, 0.112197, 25.0401
119.717, 20.3159, 14.9953, 0.112197, 25.0487
119.883, 20.3912, 14.9962, 0.112197, 25.0661
120.05, 20.321, 14.9972, 0.0384031, 25.0844
120.217, 20.2557, 15.001, 0.0384031, 25.0993
120.383, 20.4314, 14.9924, 0.0384031, 25.1015
120.55, 20.1704, 15.0095, 0.0384031, 25.0942
120.717, 21.0639, 14.9506, -0.0203317, 25.1009
120.883, 23.3882, 14.8984, -0.0203317, 25.1235

**This Page is Inserted by IFW Indexing and Scanning
Operations and is not part of the Official Record**

BEST AVAILABLE IMAGES

Defective images within this document are accurate representations of the original documents submitted by the applicant.

Defects in the images include but are not limited to the items checked:

- BLACK BORDERS
- IMAGE CUT OFF AT TOP, BOTTOM OR SIDES
- FADED TEXT OR DRAWING
- BLURRED OR ILLEGIBLE TEXT OR DRAWING
- SKEWED/SLANTED IMAGES
- COLOR OR BLACK AND WHITE PHOTOGRAPHS
- GRAY SCALE DOCUMENTS
- LINES OR MARKS ON ORIGINAL DOCUMENT
- REFERENCE(S) OR EXHIBIT(S) SUBMITTED ARE POOR QUALITY
- OTHER: _____

IMAGES ARE BEST AVAILABLE COPY.

As rescanning these documents will not correct the image problems checked, please do not report these problems to the IFW Image Problem Mailbox.